



Conway Street, W1T

£850,000

Dexters



Conway Street, W1T

A bright two double bedroom apartment in a Georgian building just off Fitzroy Square. Arranged over the top two floors with share of the freehold.

The property has been tastefully redecorated by the current owners and has a refitted kitchen and modern bathroom. The apartment has access to storage space in the eaves (not demised).

Within easy reach of Regents Park and the restaurants, galleries and retail facilities of the West End. Nearby tube stations include Great Portland Street, Warren Street and Regents Park.

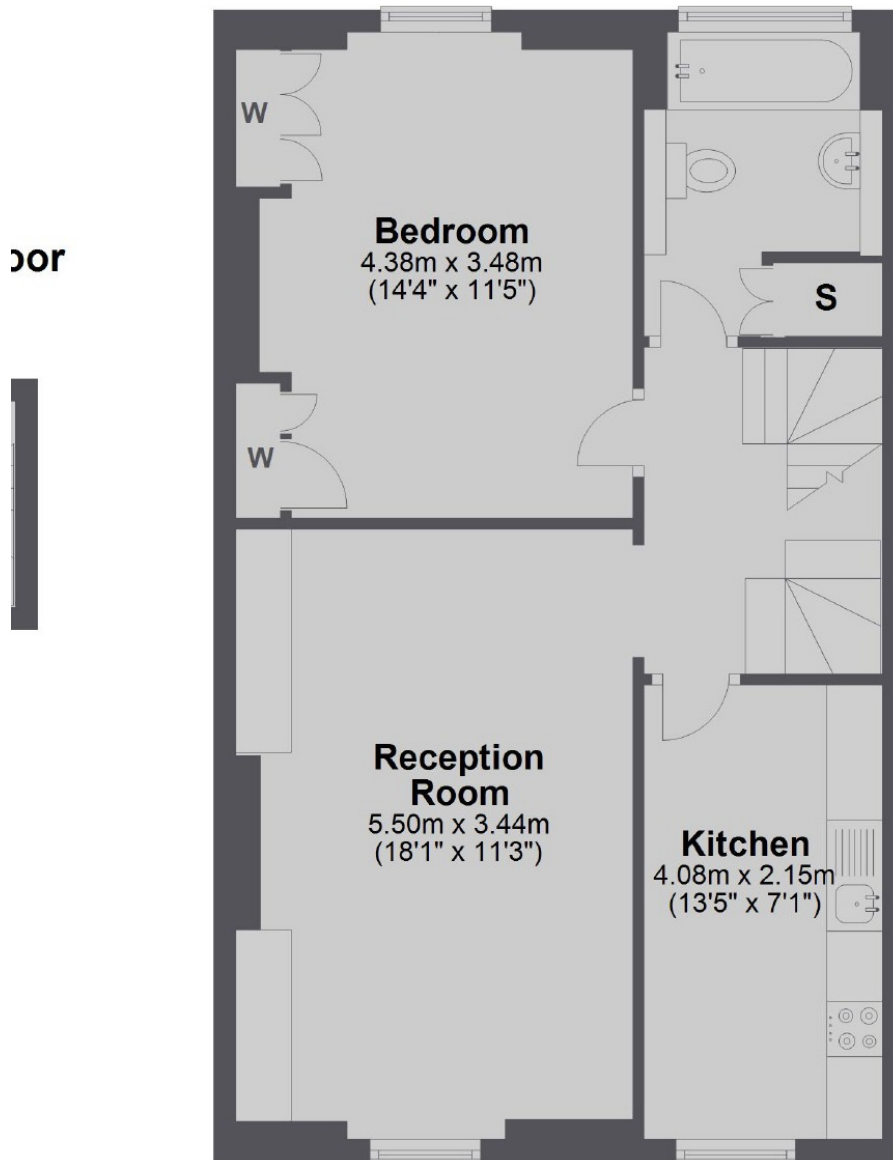
Features

- Share Of Freehold
- Two Double Bedrooms
- Reception
- Kitchen - Breakfast Room
- Period Building
- Top Floor

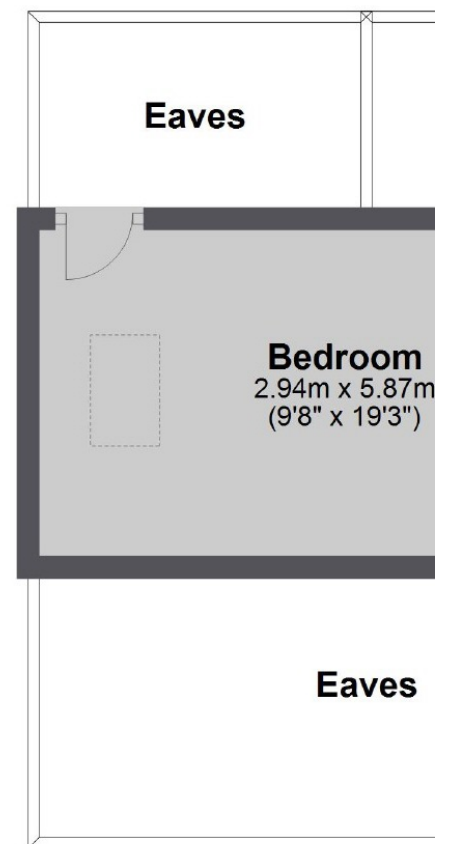


Conway Street, London, W1T

Third Floor



Fourth Flo



Total area: approx. 75.3 sq. metres (810.7 sq. feet)