

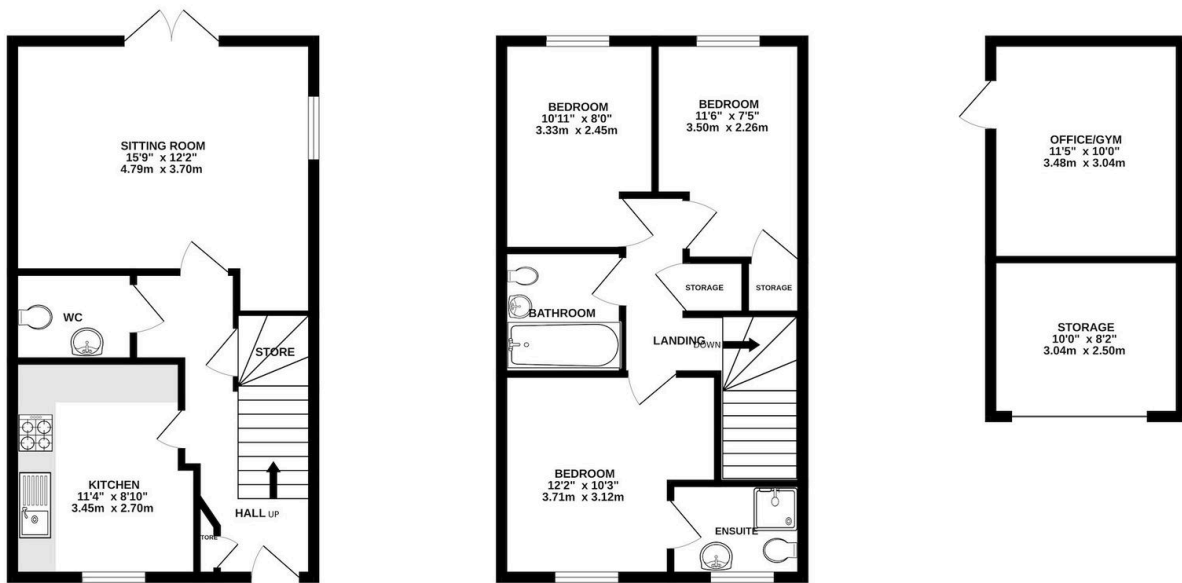
Hawthorn Lane, Lindfield, RH16 2GN

Guide Price £450,000

🛏 3 🚿 2 🚗 1



- Tucked away position on the south side of the development, on a road of just nine homes
- Wide plot with side by side driveway parking
- Double aspect sitting room opening directly onto the landscaped rear garden
- Stylish kitchen with integrated appliances and breakfast bar
- Remaining NHBC warranty until 2031
- Modern, beautifully styled home, ideal for village life
- Detached garage conversion providing a home office / gym plus front storage
- Thoughtfully landscaped garden
- Boutique-style main bedroom with ensuite shower room
- REF MG1259



Whilst every attempt has been made to ensure the accuracy of the floorplan contained here, measurements of doors, windows, rooms and any other items are approximate and no responsibility is taken for any error, omission or mis-statement. This plan is for illustrative purposes only and should be used as such by any prospective purchaser. The services, systems and appliances shown have not been tested and no guarantee as to their operability or efficiency can be given.
Made with Metropix ©2026

Guide Price £450,000-£475,000. Beautiful presentation and combining a modern home with village life. Three bedrooms, two bathrooms, landscaped garden and a favoured plot position. REF MG1259

