



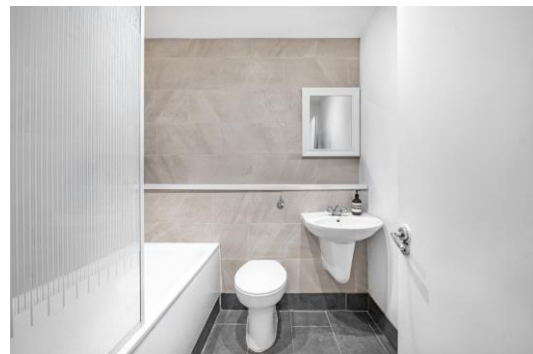
Fleet Street

Holborn, EC4A

Asking Price £675,000

Period two-bed conversion on Fleet Street with generous ceiling heights, pale oak floors, and alcove storage. South-facing reception, separate kitchen. 643 sq ft. Temple & Blackfriars stations nearby.

CHESTERTONS



Fleet Street

Holborn, EC4A



Tucked within Hind Court—one of Fleet Street's quaintly named medieval alleys that have threaded through this neighbourhood since the 16th century—this charming two-bedroom flat occupies a slice of London history that few addresses can match.

The apartment sits on the second floor of this characterful conversion, offering 643 square feet of thoughtfully configured space. The layout reveals its strengths immediately: a generous reception room measuring nearly fifteen feet square anchors the flat, its pale oak flooring and lofty ceilings creating a sense of light and space that belies the square footage. Large sash windows flood the room with natural light. The proportions are handsome enough

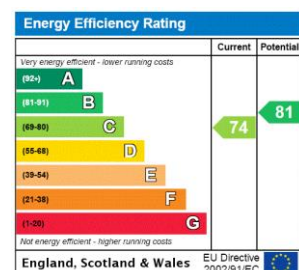
Tenure: Leasehold 97 years 5 months

Service Charge: £6565

Ground Rent: £300

Local Authority: City of London

Council Tax Band: F



Chestertons Covent Garden Sales

196 Shaftesbury Avenue

London

WC2H 8JF

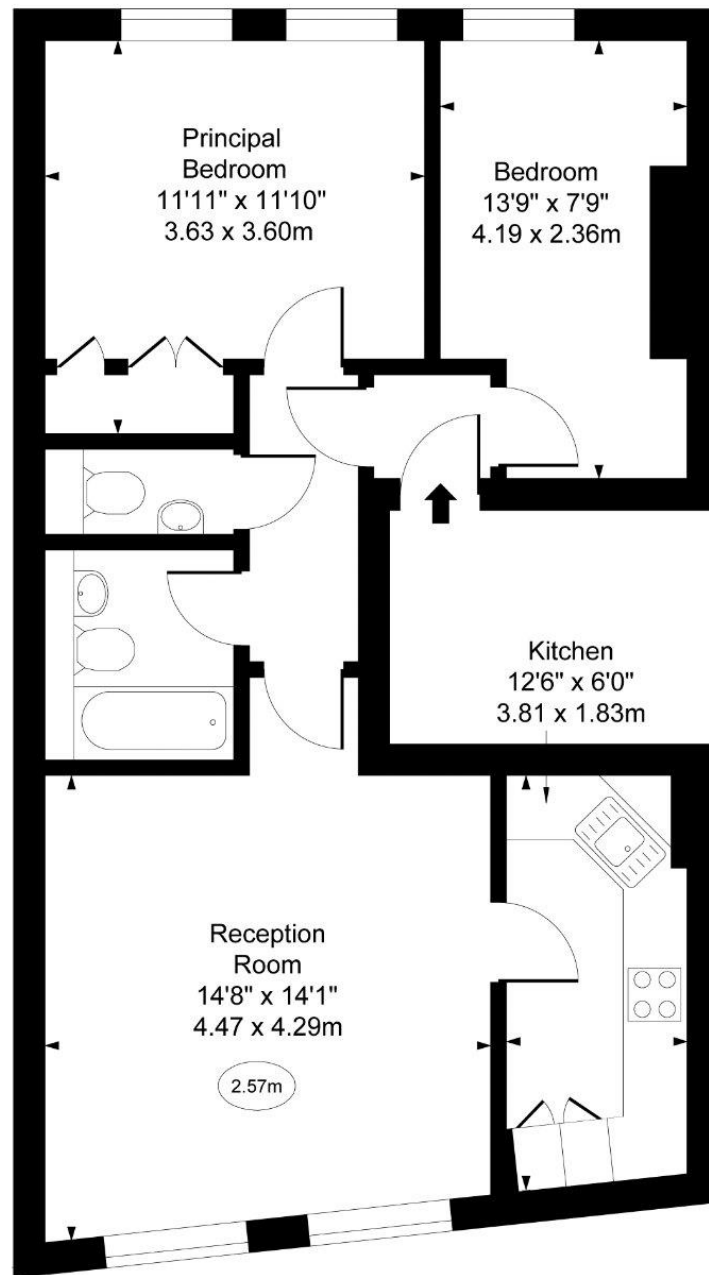
coventgarden@chestertons.co.uk

020 3040 8300

chestertons.co.uk

Fleet Street, EC4A

○ - Ceiling Height



Second Floor

Approx Gross Internal Area 643 Sq Ft - 59.73 Sq M

For Illustration Purpose Only - Not To Scale
www.goldlens.co.uk
Ref. No. 27042EH

