

Rolls Road, SE1

£325,000

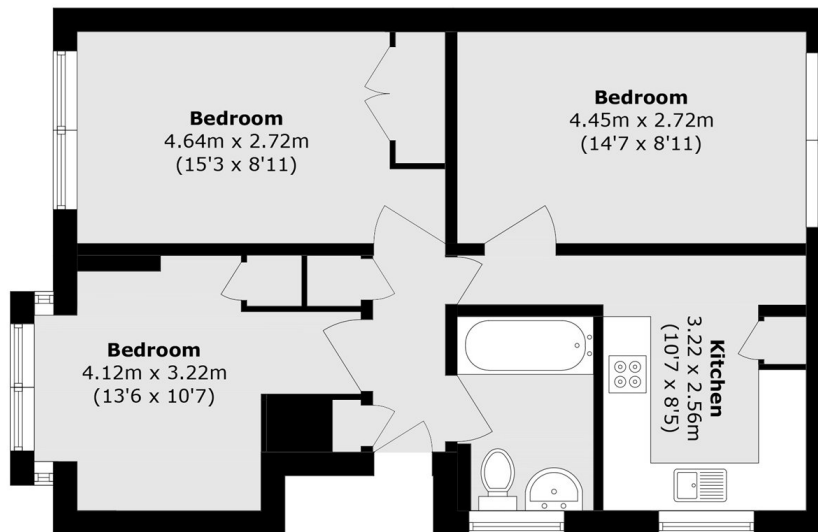
"Offers in excess of" £325,000. A highly attractive lateral flat featuring a generously proportioned living room and a separate, recently replaced kitchen-diner. The property benefits from hardwood flooring, fully fitted appliances and ample storage. Accommodation includes two well-sized double bedrooms and a modern three-piece bathroom. Offered to the market chain free.

Longland Court occupies a prime position on Rolls Road, nearby to Burgess Park and the Old Kent Road, benefiting from excellent transport links across London via nearby stations at Elephant & Castle, Bermondsey, and South Bermondsey, as well as frequent bus services into the City.

Features

Offers in excess of £325,000
Two Double Bedrooms
Large Living Room
Separate Kitchen-Diner
Excellent Transport Links
Chain Free Sale

Rolls Road, London, SE1



Total area (approx.): 54.6 sq. m (587.7 sq. ft)