

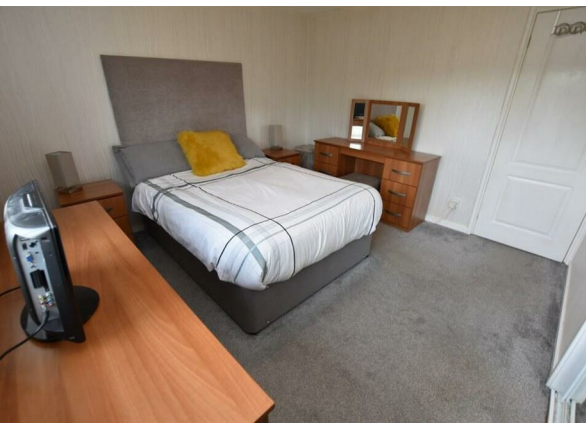
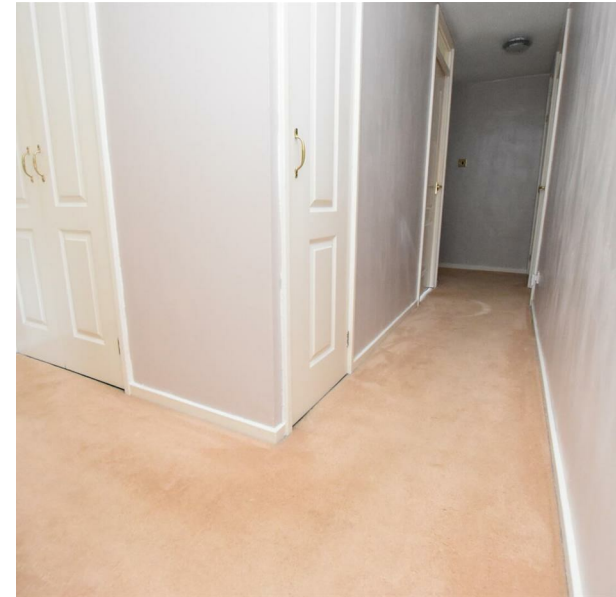
43E Friendship Way, Renfrew, PA4 0NY

Offers Over £69,995

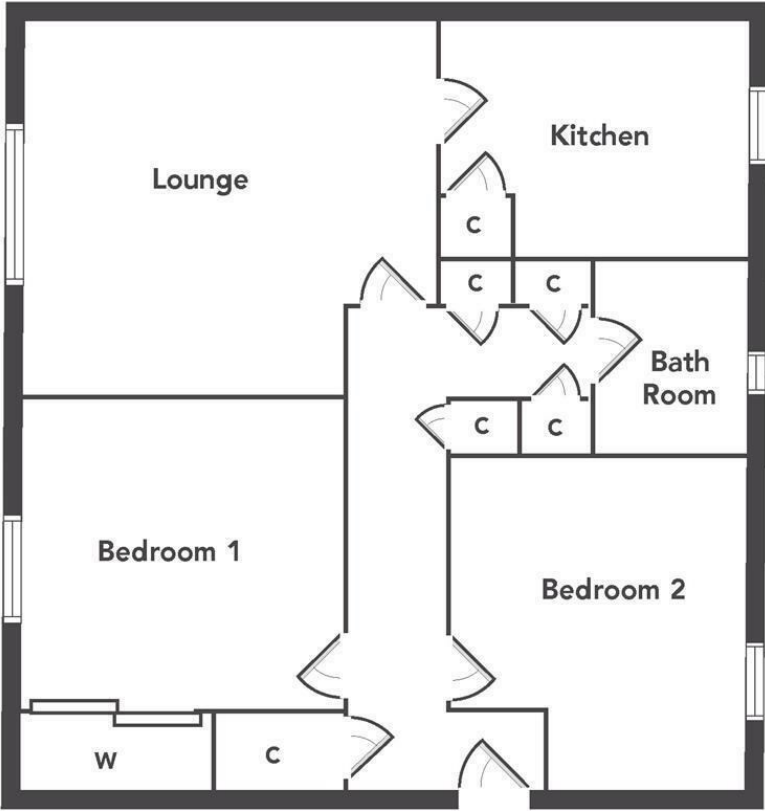
EPC Rating: D Council Tax Band: B



PEACHTREE
PROPERTY



Peachtree Property are delighted to offer to the market this spacious two-bedroom, third floor apartment, located within the ever-popular Arkleston area of Renfrew. The property is tastefully decorated throughout, ideal for the first-time buyer or those looking to downsize.



Floorplans are indicative only - not to scale
 Produced by Plush Plans Ltd



28 Hairst Street Hairst St
 Renfrew
 PA4 8QY
 0141 577 1111
 info@peachtreeproperty.co.uk

Energy Efficiency Rating		Current	Potential
<i>Very energy efficient - lower running costs</i>			
(92 plus) A			
(81-91) B			
(69-80) C			
(55-68) D		63	68
(39-54) E			
(21-38) F			
(1-20) G			
<i>Not energy efficient - higher running costs</i>			
Scotland	EU Directive 2002/91/EC		