



Alexander Court
Wandsworth Common West Side, SW18

CHESTERTONS
Wandsworth

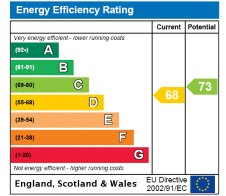




Lovely two bedroom that has access to a large communal garden. The flat is particularly well looked after and has a very warm feeling to it. This is in an amazing location, very short walk to Wandsworth Town Station, Northcote Road and CJ.

- Two Double Bedrooms
- 10 Minutes to Clapham Junction
- 5 Minutes to Wandsworth town Station
- Flexible on Furnishings
- Access to Communal Garden

£1,646.67 pcm
 Additional tenant charges apply
 Tenancy Agreement Fee: £222
 References per Tenant/Guarantor: £60
 Inventory check (approx. £100 – £250 inc. VAT)
chestertons.com/property-to-rent/applicable-fees



Tenure: Long Let
Part Furnished, Unfurnished

Chestertons Wandsworth Lettings

11 Huguenot Place
 Wandsworth
 London
 SW18 2EN

lettings.wandsworth@chestertons.com

020 8104 7540

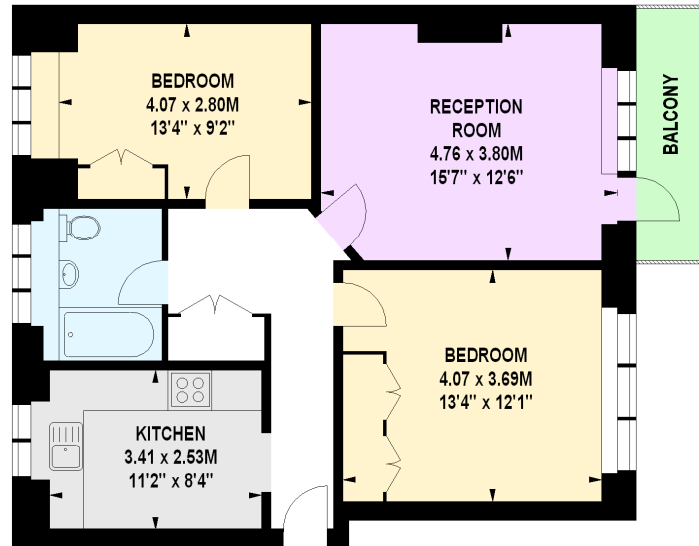
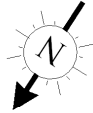
chestertons.com



Alexander Court, SW18

Approximate gross internal area

70.05 sq m / 754 sq ft



Ground Floor

Illustration For Identification Purposes Only. Not To Scale

*Floorplan Drawn According To RICS Guidelines

Copyright of FeaturePRO