



St. Johns Wood Park, NW8

£795,000

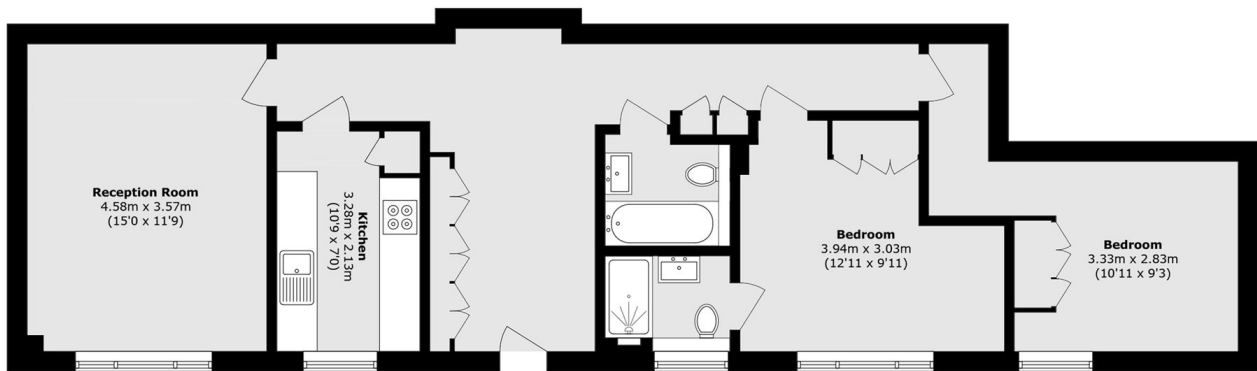
This modern two bedroom, two bathroom apartment in a portered block in St Johns Wood. This property benefits from a spacious reception room, modern separate kitchen, master bedroom with built in storage and en-suite bathroom, second double bedroom and a family bathroom. Further benefits include a separate good sized storage unit, parking and a communal courtyard.

Park Lodge is located close to St Johns Wood station and Swiss Cottage station. The local shops, restaurants, cafés and supermarkets on St Johns Wood high street are walking distance away.

Features

- Two Double Bedrooms
- Two Bathrooms
- Share of Freehold
- Private Entrance
- Porter
- Parking

St. Johns Wood Park, London, NW8



Total area (approx.): 76.4 sq. m (822.3 sq. ft)