



KENSINGTON GARDENS SQUARE,

£1,100,000

Westbourne Grove Location
Excellent Condition
Communal Gardens
Secure Car Parking
Porter & Gym
Lift

@marshandparsons
marshandparsons.co.uk

MARSH &
PARSONS



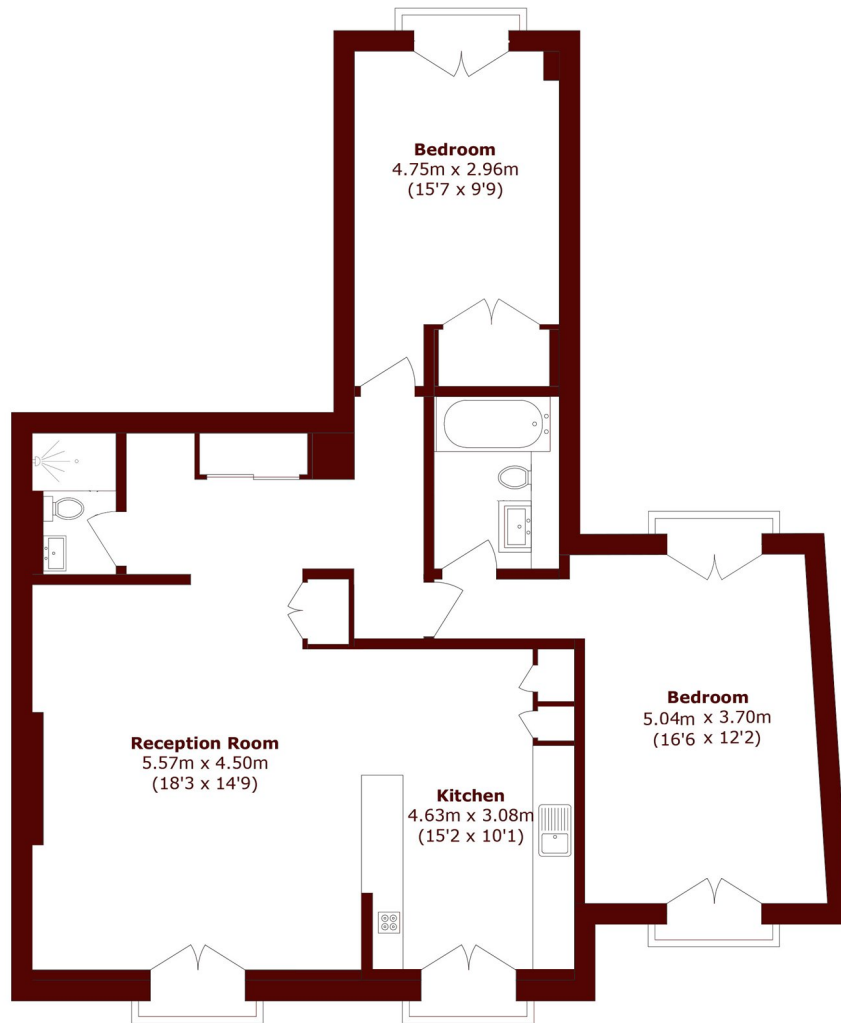
ABOUT THE PROPERTY

A beautifully presented two-bedroom, third-floor apartment set within this popular portered building on the corner of Westbourne Grove and Kensington Gardens Square.

Ideally located just off Westbourne Grove, close to Notting Hill's shops, cafés, and restaurants, with Bayswater, Queensway, and Paddington stations nearby. Hyde Park is within easy reach, and residents benefit from a 24-hour concierge, swimming pool, gym, and interactive golf, alongside the ongoing transformation of the Whiteley Development.



STEP INSIDE KENSINGTON GARDENS SQUARE



Third Floor

Total area (approx.): 95.5 sq. m (1027.9 sq. ft)

Notting Hill
020 7313 2890

Energy Rating: C We aim to make our particulars both accurate and reliable. However, they are not guaranteed; nor do they form part of an offer or contract. If you require clarification on any points then please contact us, especially if you're traveling some distance to view. Please note that appliances and heating systems have not been tested and therefore no warranties can be given as to their good working order

MARSH &
PARSONS