



Westview Crescent, London, N9 9JP



welcome to

Westview Crescent, London

Barnfields have great pleasure in offering for sale this extended five bedroom semi-detached house in a quiet cul-de-sac location within a short level walking distance of Bush Hill Park Overground Station (Liverpool Street Line), convenient bus routes and close to excellent primary and secondary schools including the popular Raglan Primary School.

The property is offered in good condition throughout and benefits from a wide rear garden and integral garage. Must be viewed to be fully appreciated.



Hallway

Laminate flooring, dado rails, radiator.

Front Reception Room

14' 2" x 12' 6" (4.32m x 3.81m)

Laminate flooring, double glazed bay window to front, radiator, picture rails, attractive fireplace surround with inset electric fireplace.

Rear Reception Room

14' 7" x 11' 4" (4.45m x 3.45m)

Laminate flooring, double glazed French doors to garden, picture rails, attractive fireplace surround with inset electric fireplace.

Kitchen

13' 7" x 8' 11" (4.14m x 2.72m)

With fitted white wall and base units with contrasting grey Quartz worktops, undermount sink, space for oven, space for a fridge freezer, double glazed windows to rear, tiled floor.

Utility Room

10' 7" x 8' 6" (3.23m x 2.59m)

With plumbing for a washing machine and dishwasher, space for a tumble dryer, tiled floor, double glazed door to garden, radiator, door to garage.

Shower Room

Step-in shower unit, low level WC wall mounted hand basin, tiled floor, tiled walls.

First Floor

Landing

Laminate flooring, loft hatch opening to loft storage space, dado rails.

Bedroom One

14' 6" x 11' 8" (4.42m x 3.56m)

Wood flooring, double glazed bay window to front, two built-in wardrobes, radiator, picture rails.

Bedroom Two

12' 6" x 11' 6" (3.81m x 3.51m)

Wood flooring, double glazed windows to rear, built-in wardrobes, radiator, picture rails.

Bedroom Three

12' 2" x 9' 6" (3.71m x 2.90m)

Laminate flooring, double glazed windows to front, radiator.

Bedroom Four

9' 6" x 8' 3" (2.90m x 2.51m)

Laminate flooring, double glazed windows to rear, built-in cupboard housing the hot water tank, radiator.

Bedroom Five

7' 9" x 6' 11" (2.36m x 2.11m)

Laminate flooring, radiator, double glazed windows to front.

Bathroom

Panelled bath with shower over and glass screen, low level WC, pedestal wash hand basin, fully tiled walls, laminate flooring, double glazed window to rear.

Outside

Garden

A wider than average lawned rear garden with patio area to front, raised tree and shrub borders to rear, garden shed.

Garage

A spacious garage accessed internally from the utility room and also via an electric roller door to front with power and light.

Off-Street Parking

Brick paved off-street parking to the front for two cars.



view this property online barnfields.co.uk/Property/ENF105144







welcome to

Westview Crescent, London

- Five Bedrooms
- Two Reception Rooms
- Modern Fitted Kitchen
- Utility Room & Downstairs Shower Room
- Integral Garage

Tenure: Freehold EPC Rating: D

Council Tax Band: E

£740,000



Please note the marker reflects the postcode not the actual property

check out more properties at [barnfields.co.uk](https://www.barnfields.co.uk)



Property Ref:
ENF105144 - 0003

1. MONEY LAUNDERING REGULATIONS Intending purchasers will be asked to produce identification documentation at a later stage and we would ask for your co-operation in order that there is no delay in agreeing the sale. 2. These particulars do not constitute part or all of an offer or contract. 3. The measurements indicated are supplied for guidance only and as such must be considered incorrect. Potential buyers are advised to recheck measurements before committing to any expense. 4. We have not tested any apparatus, equipment, fixtures or services and it is in the buyers interest to check the working condition of any appliances. 5. Where an EPC, or a Home Report (Scotland only) is held for this property, it is available for inspection at the branch by appointment. If you require a printed version of a Home Report, you will need to pay a reasonable production charge reflecting printing and other costs. 6. We are not able to offer an opinion either written or verbal on the content of these reports and this must be obtained from your legal representative. 7. Whilst we take care in preparing these reports, a buyer should ensure that his/her legal representative confirms as soon as possible all matters relating to title including the extent and boundaries of the property and other important matters before exchange of contracts.

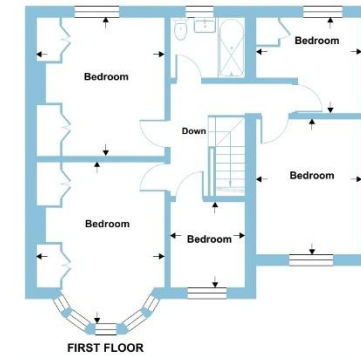
Barnfields is a trading name of Sequence (UK) Limited which is registered in England and Wales under company number 4268443, Registered Office is Cumbria House, 16-20 Hockliffe Street, Leighton Buzzard, Bedfordshire, LU7 1GN. VAT Registration Number is 500 2481 05.



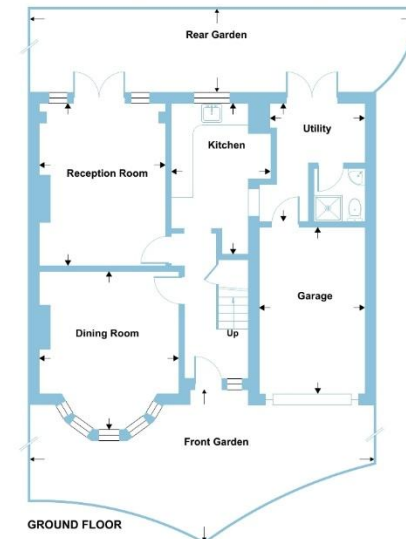
Westview Crescent , Enfield, N9

Approximate Area = 1311 sq ft / 121.7 sq m
Garage = 142 sq ft / 13.1 sq m
Total = 1453 sq ft / 134.8 sq m

For identification only - Not to scale



FIRST FLOOR



GROUND FLOOR

Floor plan produced in accordance with RICS Property Measurement 2nd Edition, incorporating International Property Measurement Standards (IPMS2 Residential). © nrschem 2026. Produced for Barnard Marcus. REF: 1407504



020 8363 3394



info@barnfields.com



1a Windmill Hill, Enfield, Middlesex, EN2 6SE



[barnfields.co.uk](https://www.barnfields.co.uk)