



sparks ellison

195 Winchester Road, Chandler's Ford, SO53 2DU

£715,000

This attractive detached residence features four bedrooms on the first floor along with three inviting reception rooms on the ground floor, providing versatile areas for relaxation, entertainment, or family gatherings. The westerly facing rear garden is a delightful outdoor space, perfect for enjoying the afternoon sun and hosting summer barbecues. Additionally, the good-sized frontage allows for a generous degree of off-road parking, ensuring that you and your guests can park with ease. Situated close to the centre of Chandler's Ford, this home benefits from excellent access to local amenities and the M3 motorway, making commuting a breeze. Furthermore, it falls within the highly regarded Thornden School catchment area, making it an attractive option for families prioritising education. With no forward chain, this property is ready for you to move in and make it your own.

ACCOMMODATION

GROUND FLOOR

Entrance Hall:

Stairs to first floor, under stairs storage cupboard.

Sitting Room:

16' x 12'1" (4.88m x 3.69m) Feature fireplace surround and hearth.

Dining Room:

12'9" x 11' (3.89m x 3.35m)

Family Room:

12'6" x 11'11" (3.81m x 3.62m)

Kitchen:

13'9" x 9' (4.20m x 2.75m) Built in electric oven, built-in gas hob, fitted extractor hood, space for fridge freezer, space and plumbing for dishwasher, wall mounted boiler.

Shower Room:

Comprising shower in cubicle, wash hand basin, WC.

Inner Passage:

Space and plumbing for dishwasher, work surface with space for tumble dryer.

Conservatory:

17'9" x 11'4" (5.40m x 3.46m)

FIRST FLOOR

Landing:

Access to loft space.

Bedroom 1:

15'11" x 12'2" (4.86m x 3.71m)

Bedroom 2:

12' x 11'1" (3.65m x 3.37m) Built in wardrobe, built-in airing cupboard.

Bedroom 3:

10'7" x 8'10" (3.22m x 2.69m)

Bedroom 4:

9'3" x 6'6" (2.82m x 1.97m)

Bathroom:

Composing bath with shower over, wash hand basin, WC.

OUTSIDE

Front:

Area laid to lawn, enclosed by mature hedgerow, large block paved driveway providing off road parking for approximately eight cars, side access to rear garden.

Rear Garden

Measures approximately 60' x 53' and comprises area laid to lawn, mature hedgerow and bushes, garden shed. The garden benefits from a pleasant Westerly aspect.

Garage:

18'7" x 10'2" (5.66m x 3.11m) With up and over door, power and light.

OTHER INFORMATION

Tenure:

Freehold

Approximate Age:

1920's

Approximate Area:

181.4sqm/1954sqft (Including garage)

Sellers Position:

No forward chain

Heating:

Gas central heating

Windows:

UPVC double glazed windows

Infant/Junior School:

Chandler's Ford Infant/Merdon Junior School

Secondary School:

Thornden Secondary School

Council Tax:

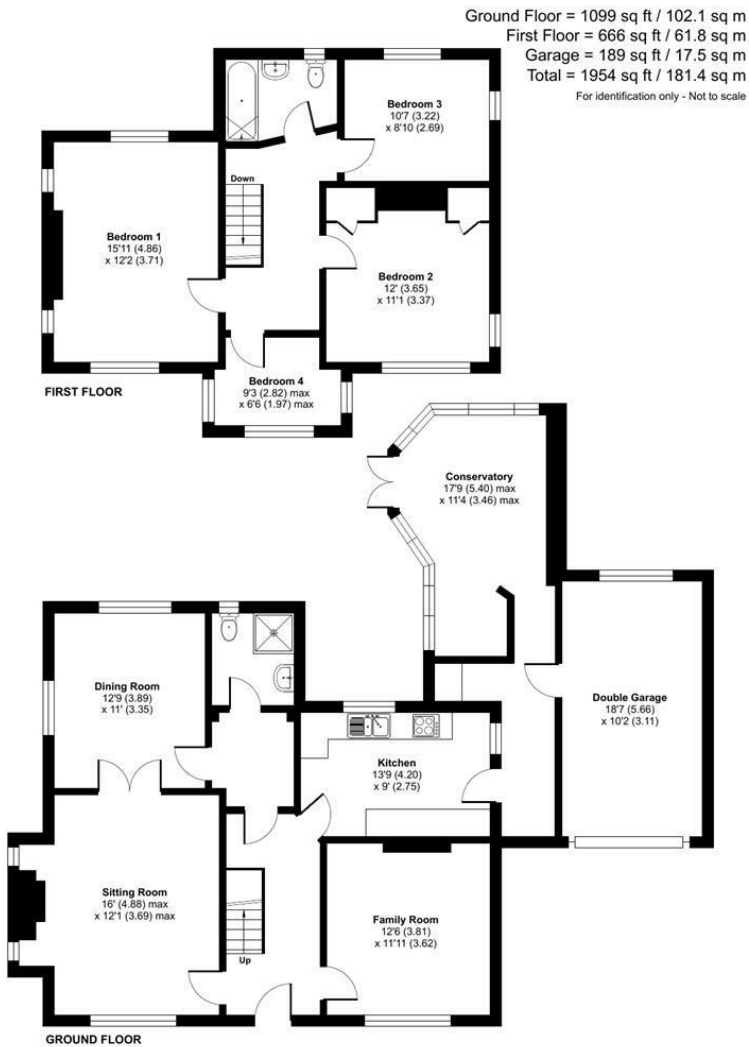
Band F

Local Council:

Eastleigh Borough Council - 02380 688000

Agents Note:

If you have an offer accepted on a property we will need to, by law, conduct Anti Money Laundering Checks. There is a charge of £60 including vat for these checks regardless of the number of buyers involved.



Energy Efficiency Rating		
	Current	Potential
Very energy efficient - lower running costs		
(92 plus) A		
(81-91) B		
(69-80) C		
(55-68) D	65	74
(39-54) E		
(21-38) F		
(1-20) G		
Not energy efficient - higher running costs		
England & Wales	EU Directive 2002/91/EC	

Floor plan produced in accordance with RICS Property Measurement 2nd Edition, Incorporating International Property Measurement Standards (IPMS2 Residential). © rnichecom 2025. Produced for Sparks Ellison. REF: 1333251

94 Winchester Road, Chandler's Ford, Hampshire, SO53 2GJ

Sales: t: 02380 255333 e: property@sparksellison.co.uk

Lettings: t: 02380 018518 e: lettings@sparksellison.co.uk

While we endeavour to make our sales particulars fair, accurate and reliable, they are only a general guide to the property and, accordingly, if there is any point which is of particular importance to you please contact the office and we will be pleased to check it for you, especially if you are contemplating travelling some distance to view the property. These approximate room sizes are only intended as general guidance. You must verify the dimensions carefully before ordering carpets or any built in furniture. Please note we have not tested the services or any of the equipment or appliances in this property, accordingly we strongly advise prospective buyers to commission their own survey or service report before finalising their offer to purchase. These particulars are issued in good faith but do not constitute representations of fact or form part of any offer or contract. The matters referred to in these particulars should be independently verified by prospective buyers or tenants. Neither Sparks Ellison nor any of its employees or agents has any authority to make or give any representation or warranty whatever in relation to this property. Your home is at risk if you do not keep up repayments on a mortgage or other loan secured on it. Written quotations available on request. All loans secured on property. Life assurance usually required.



