



LOURDES APARTMENTS, W14

£450,000

A beautifully presented one bedroom flat set within Lourdes Apartments, a striking conversion of an historic Fulham church in the heart of W14.

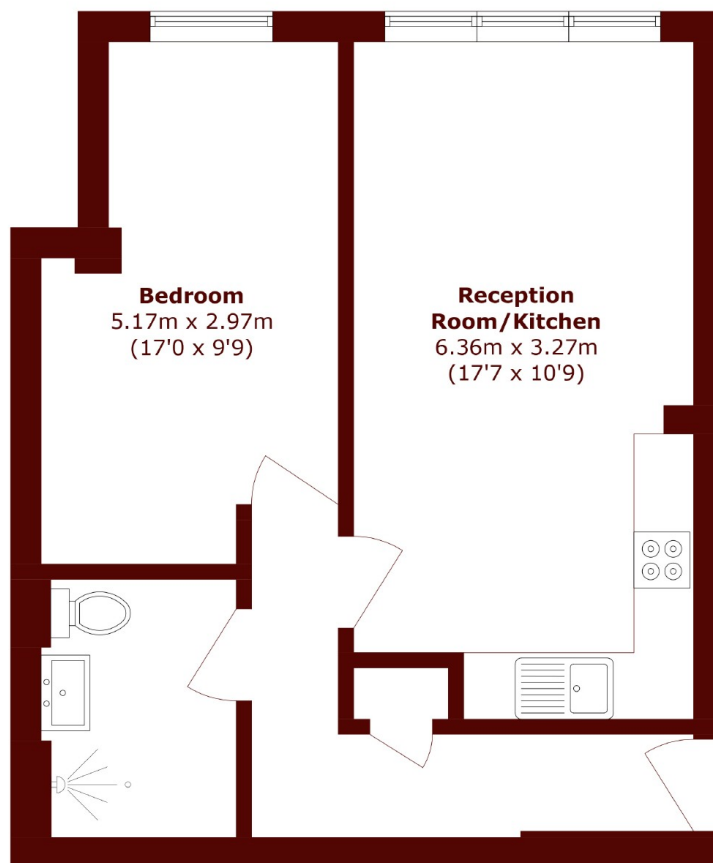
No onward chain
Church conversion
Good transport links

Stunning condition
Over 500sq ft
Energy rating: b

@marshandparsons
marshandparsons.co.uk

MARSH &
PARSONS

STEP INSIDE LOURDES APARTMENTS



Total area (approx.): 48.4 sq. m (520.9 sq. ft)

Fulham
020 7736 9822

Energy Rating: B We aim to make our particulars both accurate and reliable. However, they are not guaranteed; nor do they form part of an offer or contract. If you require clarification on any points then please contact us, especially if you're traveling some distance to view. Please note that appliances and heating systems have not been tested and therefore no warranties can be given as to their good working order

**MARSH &
PARSONS**