



CASSON SQUARE, SE1

£500,000

Situated on the 9th-floor is this studio apartment, featuring a Juliet balcony, open-plan reception room, fully-fitted kitchen with Miele appliances, built-in wardrobe and ample storage. The apartment has wooden flooring throughout, triple-glazed windows, cooling and heating systems, and a washer/dryer.

- Offers Over £500,000
- Studio Apartment
- 9th Floor
- 24hr Concierge
- On-Site Security Team
- Residents Gym & Pool

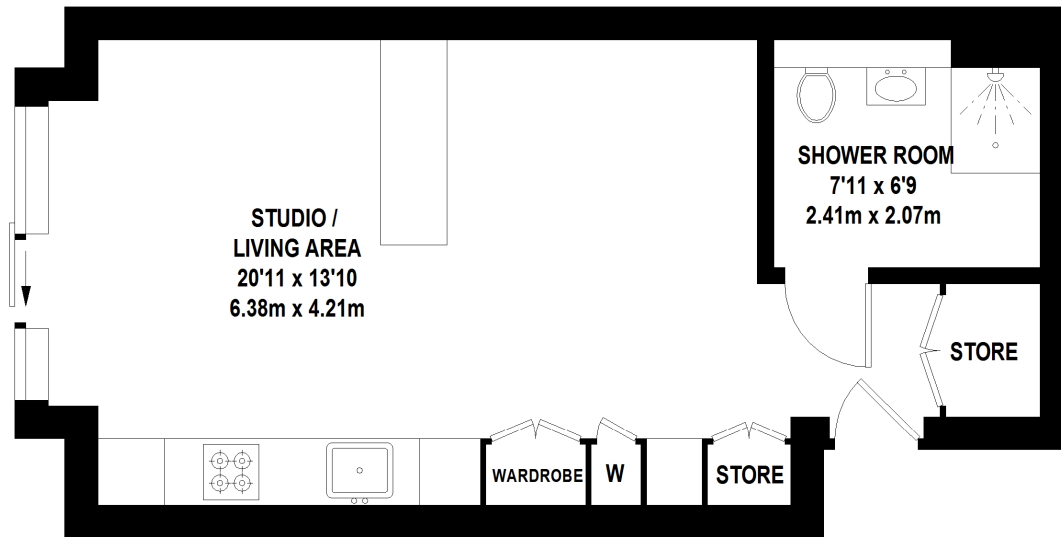


ABOUT THE HOME

Located right on the South Bank just metres from Waterloo Overground and Underground Station. There is also secure bicycle parking in the basement.







TOTAL APPROX. FLOOR AREA 382 SQ.FT. (35.48 SQ.M)

Whilst every attempt has been made to ensure the accuracy of the floor plan contained here, measurements of door, windows, rooms and any other items are approximate and no responsibility is taken for any error, omission, or mis-statement. This plan is for illustrative purposes only and should be used as such by any prospective purchaser. The services, systems and appliances shown have not been tested and no guarantee as to their operability or efficiency can be given

© 2021 (ID784941)

LiFE RESIDENTIAL

252 Westminster Bridge
Road, London, SE1 7PD
Sales: 020 7476 0125
Lettings: 020 7620 1600

Energy Rating: B. We aim to make our particulars both accurate and reliable. However they are not guaranteed; nor do they form part of an offer or contract. If you require clarification on any points then please contact us, especially if you're traveling some distance to view. Please note that appliances and heating systems have not been tested and therefore no warranties can be given as to their good working order.