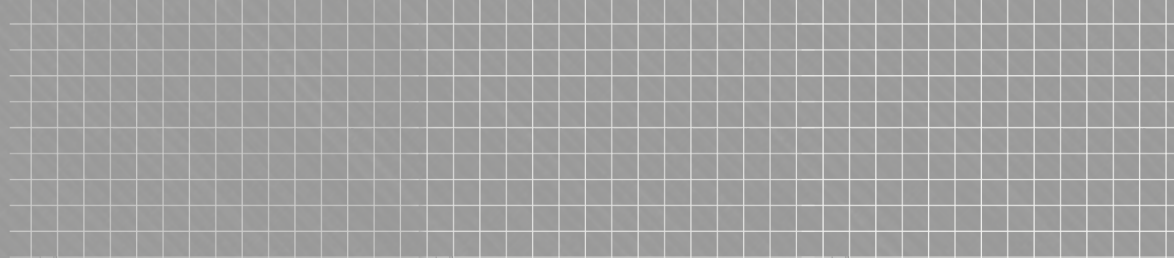




Your Logo



1a Earl Howe Crescent, Langar

Guide Price £300,000 - £325,000

🛏️ 3 🚿 2 🚗 1



Ref AH1286

Marketed By Alex Harding Personal Estate Agent

Guide Price £300,000 - £325,000.

This modern, attractive three-bedroom detached home offers stylish, modern living in a sought-after Vale of Belvoir village setting. Combining generous living space, a high-quality finish throughout, and a practical layout, it's perfectly suited to families and professionals looking for a ready-to-move-into home within easy reach of Bingham, Nottingham, and the surrounding countryside.

Stepping inside, the welcoming hallway leads to a bright and spacious living room, with a charming bay-fronted window creating a light and relaxing space to unwind.

The heart of the home is the impressive open-plan living and dining area, offering plenty of room for everyday family life and entertaining, with doors opening directly onto the rear garden. The modern kitchen, complete with vaulted ceiling, provides a bright and practical space that blends style with functionality.

A useful downstairs cloakroom/WC completes the ground floor.

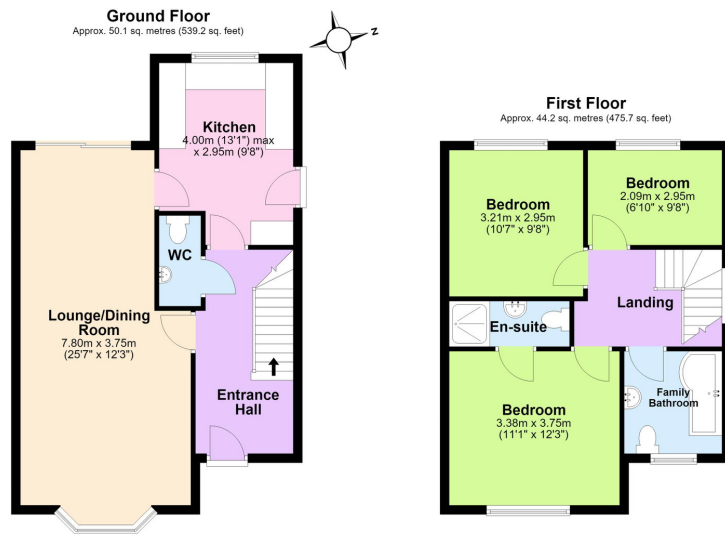
Upstairs, the property offers three well-proportioned bedrooms, with two benefiting from built-in storage. The main bedroom enjoys the added luxury of an en suite, alongside a modern family bathroom serving the remaining bedrooms.

Outside

To the front, a spacious driveway provides off-road parking for several vehicles. The private rear garden, accessed through French doors from the dining space, offers a peaceful retreat – perfect for relaxing, entertaining friends, enjoying a summer barbecue, or family time outdoors.

Situated in the welcoming village of Langar, this home benefits from beautiful countryside surroundings, scenic walks, a well-regarded





Total area: approx. 94.3 sq. metres (1014.9 sq. feet)

- No Chain Sale
- Close by to Local School
- 10 minutes from Bingham
- Fitted Wardrobes to 2 Bedrooms
- Close to the Engine Yard & Belvoir Castle
- EPC Rating C
- Close by to Local Pub
- Move in Ready Condition
- Located in the Vale of Belvoir
- Freehold

