



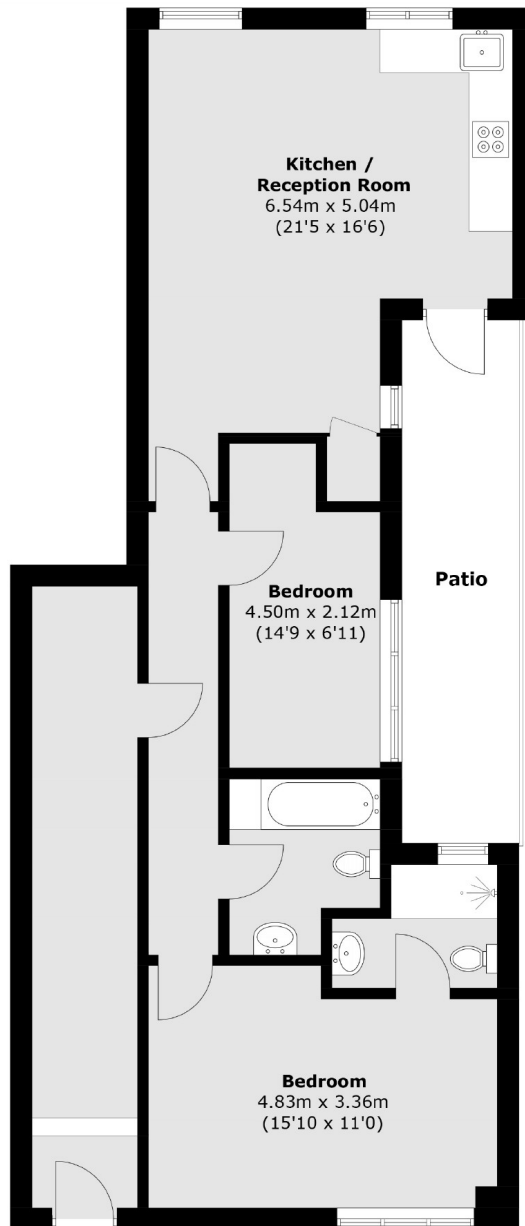
## Elfin Grove, TW11

£449,950

A stunning, newly converted two double bedroom, two bathrooms including one en-suite flat situated in the heart of central Teddington, offering contemporary living with an abundance of natural light and generous outdoor space. A standout feature of this home is the presence of a private terrace.

Ideally located just a short walk from Teddington High Street and Teddington Station, the property offers excellent access to local shops, cafés, restaurants, and transport links into central London.

- Large Reception • Two Double Bedrooms • 2 Bathrooms •
- No Chain • Fabulous Location •



Total area (approx.): 81.1 sq. m (873.0 sq. ft)  
Patio: 11.8 sq. m (127.0 sq. ft)

Snellers Teddington Sales  
74 Broad Street  
Teddington  
TW11 8QX  
020 8408 8040  
teddingtonsales@snellers.co.uk

Energy Rating: We aim to make our particulars both accurate and reliable. However they are not guaranteed; nor do they form part of an offer or contract. If you require clarification on any points then please contact us, especially if you're traveling some distance to view. Please note that appliances and heating systems have not been tested and therefore no warranties can be given as to their good working order