



Elgin Avenue, W9

£1,100,000

Located within prime Maida Vale in one of its iconic red-brick mansions, this second floor flat comes complete with three bedrooms, a spacious reception with bay windows, separate kitchen, two balconies and large sash windows throughout.

Elgin Avenue is in the heart of Maida Vale. The property is conveniently located within walking distance of several transportation links, including Maida Vale station (Bakerloo line), a myriad of restaurants, cafés and shops, and the green spaces of Paddington Recreation Ground.

Features

- Red-Brick Mansion
- Two Balconies
- Sash Windows Throughout
- Prime Maida Vale
- Share of Freehold
- Chain Free

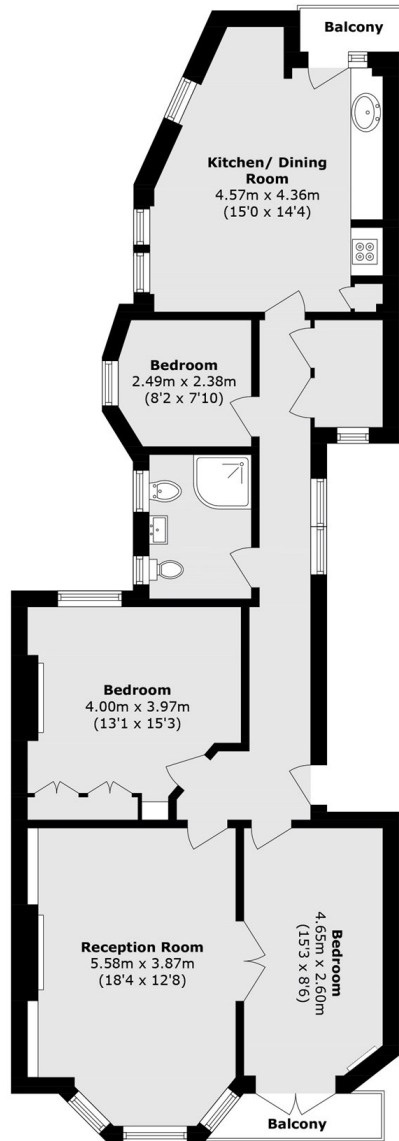


Elgin Avenue, W9

Set on the second floor of a red-brick mansion, this three bedroom apartment offers spacious, family living. With two private balconies and a layout that is both practical and versatile, this makes it the perfect home for families looking to upsize. The entrance hall leads through to a bright reception room, where a bay window fills the space with natural light, creating a comfortable setting for relaxing or entertaining. The separate kitchen provides plenty of space for cooking and dining, with direct access to a private balcony. The principal bedroom benefits from built-in storage, while one of the additional bedrooms also enjoys access to its own private balcony.



Elgin Avenue, Maida Vale, W9



Second Floor

Total area (approx.): 95.4 sq. m (1026.9 sq. ft)
Balcony area (approx.): 4.1 sq. m (44.1 sq. ft)