



Redmayne Arnold & Harris  
estate agents, letting agents & surveyors

rah.co.uk



TO LET



6 Ellesmere Road, Cambridge, CB4 2HP

£1,800 Per Month



**THE PROPERTY**

Located on Ellesmere Road in north Cambridge, this well-presented three-bedroom semi-detached home offers spacious and practical living.

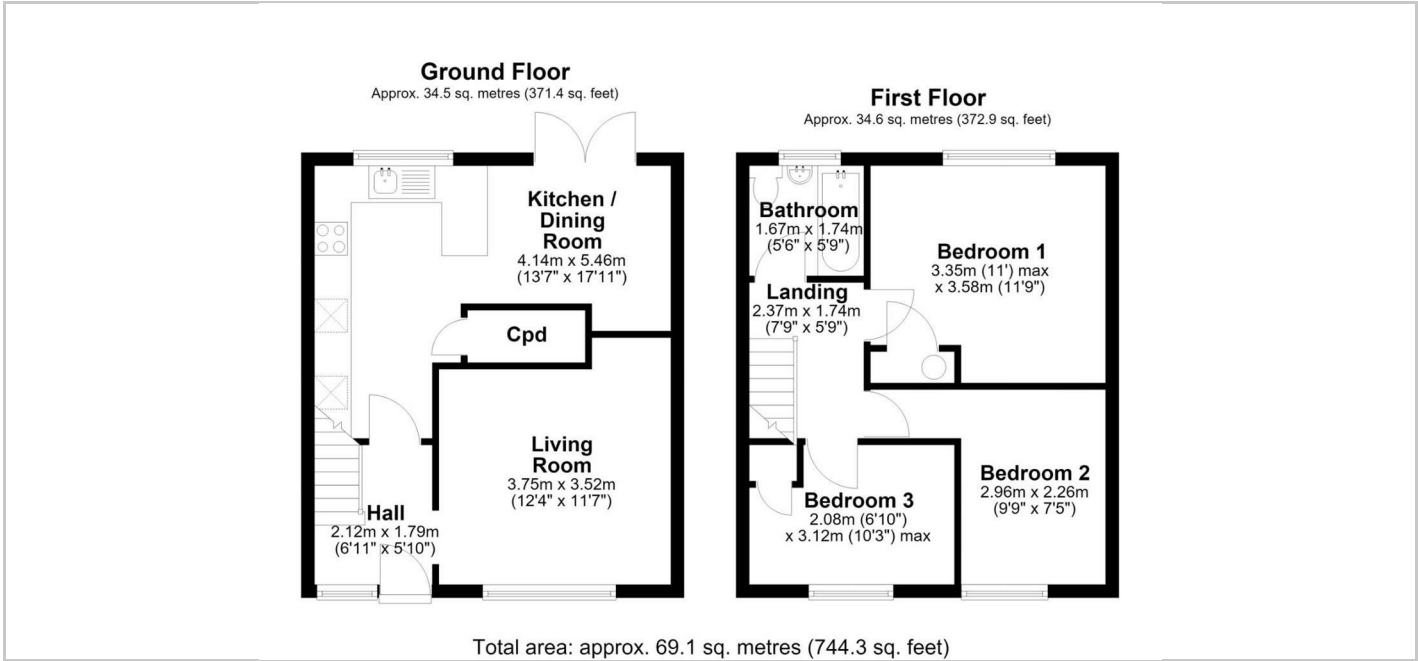
The property benefits from a bright reception room, well-proportioned bedrooms, a modern bathroom, and driveway parking for two cars. Conveniently located close to local amenities, schools, parks, and transport links into Cambridge city centre.

A great opportunity to rent a well-maintained home in a popular residential location.

The property will be managed by RAH.

- EPC Rating: D
- Council Band: C
- Deposit: £2070
- Holding Deposit: £390

**SITUATION**



**Directions**

