



Guide Price
£160,000

Leasehold

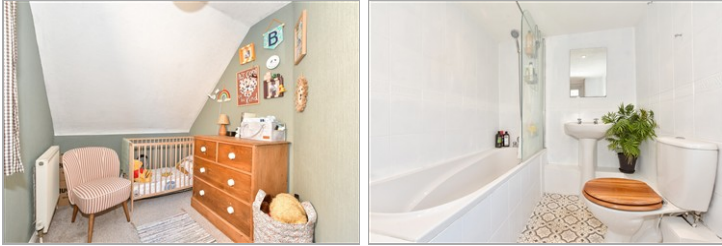
2x 🏠 1x 🚗 1x 🚗

**St. John's Church Road,
Folkestone, Kent, CT19**

OVER 60?

Secure this property
for up to **59% less!**

Wards
Helping you move forwards



Main features

- Fantastic location close to the station and Radnor Park
- Bright/spacious with large windows
- Beautifully maintained and in great condition throughout
- Contemporary fitted kitchen and bathroom
- Ideal for first-time buyers, investors, or commuters

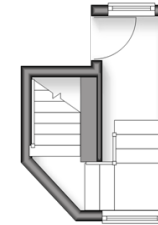
Accommodation

SPLIT LEVEL FIRST FLOOR
Hallway

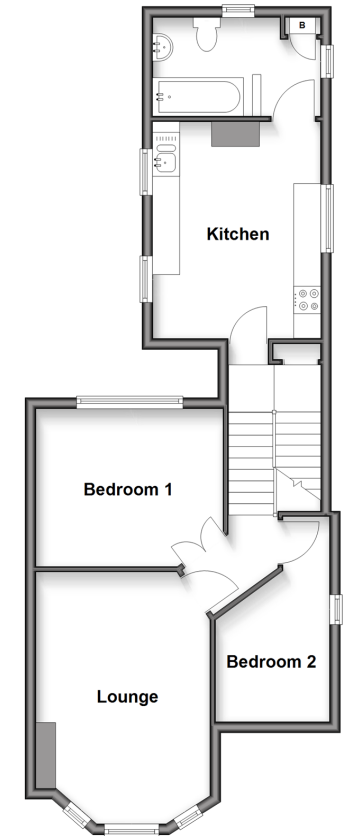
SPLIT LEVEL SECOND FLOOR

Landing
Lounge: 13'9 x 10'3 (4.19m x 3.13m)
Bedroom 1: 11'4 x 9'5 (3.46m x 2.87m)
Bedroom 2: 8'7 x 6'11 (2.62m x 2.11m)
Kitchen: 12'11 x 10'1 (3.94m x 3.08m)
Bathroom

Split Level First Floor
Approx. 6.5 sq. metres (70.1 sq. feet)



Split Level Second Floor
Approx. 56.2 sq. metres (605.5 sq. feet)



Call Folkestone - 01303 256505 ■ wardsfolkent.co.uk

- Legal advice should be taken to verify fixtures/fittings, planning, alterations and/or lease details
- Appliances & services are untested, dimensions are approximate and floor plans are not to scale
- Through a Homewise Home For Life Plan people aged 60+ can secure this property for up to 50% less, by purchasing a Lifetime Lease.



12638408/20251029/LS/LS1