



Hollys Road, Yoxall - No Upward Chain

£295,000

🛏️ 3 🪑 2 🚗 2



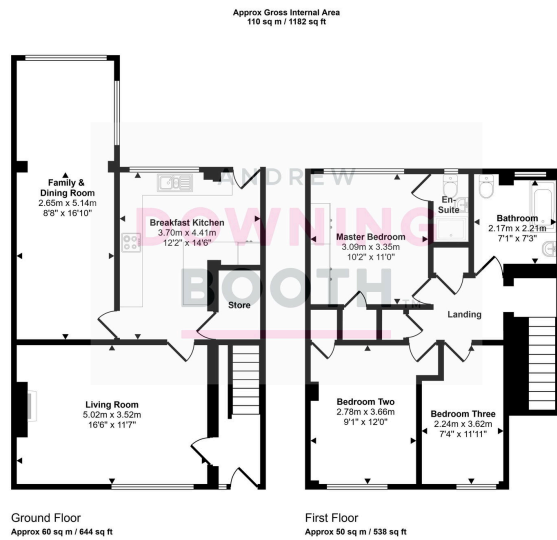
No upward chain - A fabulous three bedroom detached property in the highly desirable village of Yoxall, boasting superb space across two floors, simply waiting for someone to put their stamp on it and be transformed into a wonderful family home.

Yoxall is known for its quaint and picturesque nature, surrounded by endless rural countryside that offers tranquil and leafy walks and trails for any keen ramblers, whilst both the exceptionally picturesque Cannock Chase and the thriving city centre of Lichfield are within a twenty minute drive via scenic country roads, and the highly regarded John Taylor High School within catchment.

The accommodation has been extended to the ground floor, now featuring a large living room, attractive breakfast kitchen and substantial (and particularly versatile) family/dining room, whilst to the first floor are three good size bedrooms and the main family bathroom, with the Master bedroom boasting its own en-suite shower room. A generous plot consists of well maintained lawned gardens to both the front and rear, with very impressive driveway offering parking for several vehicles.

A viewing is nothing short of imperative in order to appreciate just how much is on offer.





This floorplan is only for illustrative purposes and is not to scale. Measurements of rooms, doors, windows, and any items are approximate and no responsibility is taken for any error, omission or mis-statement. Icons of items such as bathroom suites are representations only and may not look like the real items. Made with Made Snippy 360.

- Three Bedroom Detached Property
- Superb Range Of Living Space
- Large Living Room Plus Substantial Family / Dining Room
- Virtual 360 Degree Tour Available
- EPC Rating: D
- Extended To The Ground Floor
- Master Bedroom With En-Suite
- Impressive Driveway Plus Well Maintained Gardens To Front & Rear
- Highly Desirable & Quiet Village Location
- Council Tax Band: D

