



Jack Taggart & Co

RESIDENTIAL SALES AND LETTINGS

PRICE GUIDE

**£325,000**

**St. Margarets Place**

Brighton, BN1 2FQ

## PROPERTY SUMMARY

GUIDE PRICE £325,000 - £375,000 Sitting high on the 11th floor of Sussex Heights, one of Brighton's most iconic landmarks and the tallest residential building on the South Coast, this exceptional two-bedroom apartment enjoys breathtaking south and east-facing views across the city, coastline and towards the South Downs National Park.

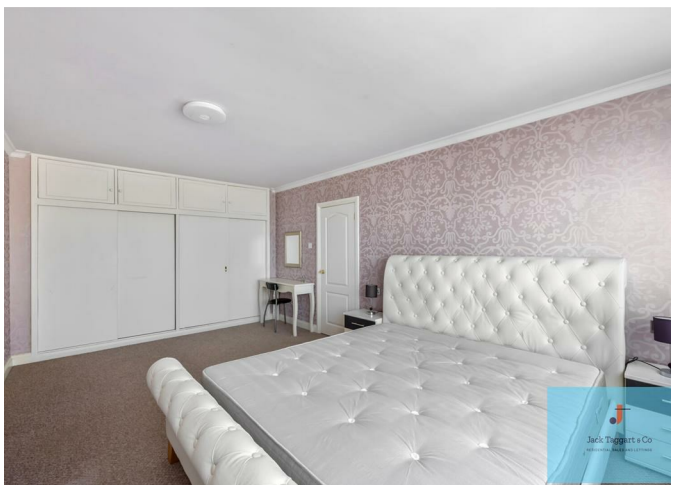
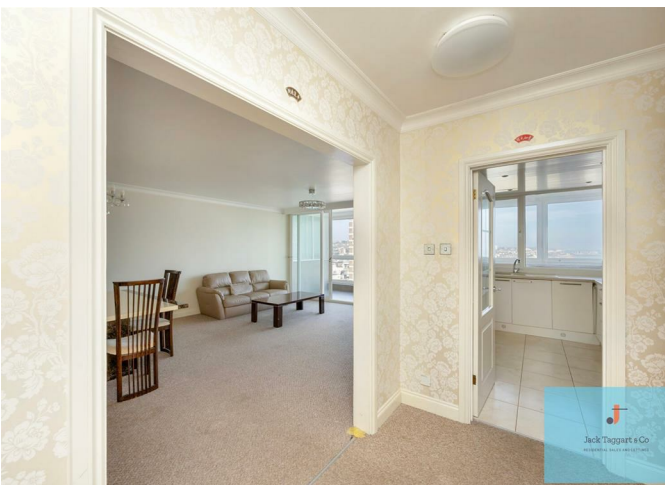
2



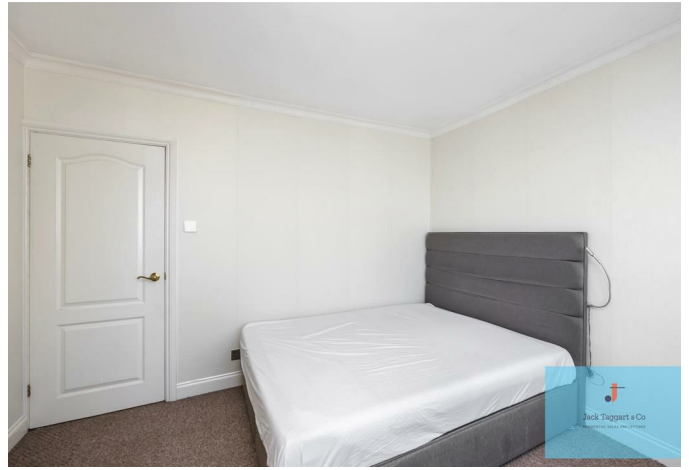
1



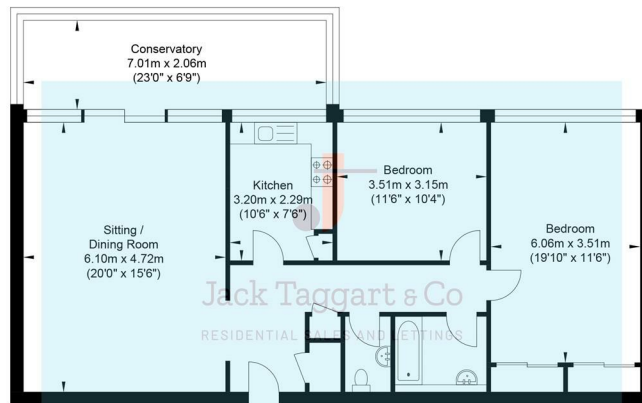
1







## St Margaret's Place



Eleventh Floor  
Approximate Floor Area  
1118.0 sq ft  
(103.87 sq m)

Approximate Gross Internal Area = 103.87 sq m / 1118.0 sq ft  
Illustration for identification purposes only, measurements are approximate, not to scale.

2  
1  
1

Energy Efficiency Rating		
	Current	Potential
Very energy efficient - lower running costs		
(92 plus) <b>A</b>		
(81-91) <b>B</b>		
(69-80) <b>C</b>		
(55-68) <b>D</b>		
(39-54) <b>E</b>		
(21-38) <b>F</b>		
(1-20) <b>G</b>		
Not energy efficient - higher running costs		
<b>England &amp; Wales</b>	EU Directive 2002/91/EC	

Agents Note: Whilst every care has been taken to prepare these particulars, they are for guidance purposes only. All measurements are approximate and are for general guidance purposes only and whilst every care has been taken to ensure their accuracy, they should not be relied upon and potential buyers/tenants are advised to recheck the measurements



**OFFICE ADDRESS**  
55 Queen Victoria  
Avenue  
BN3 6XA

**OFFICE DETAILS**  
01273 974929  
sales@jacktaggart.co.uk