



## Burnt Ash Hill, SE12

£375,000

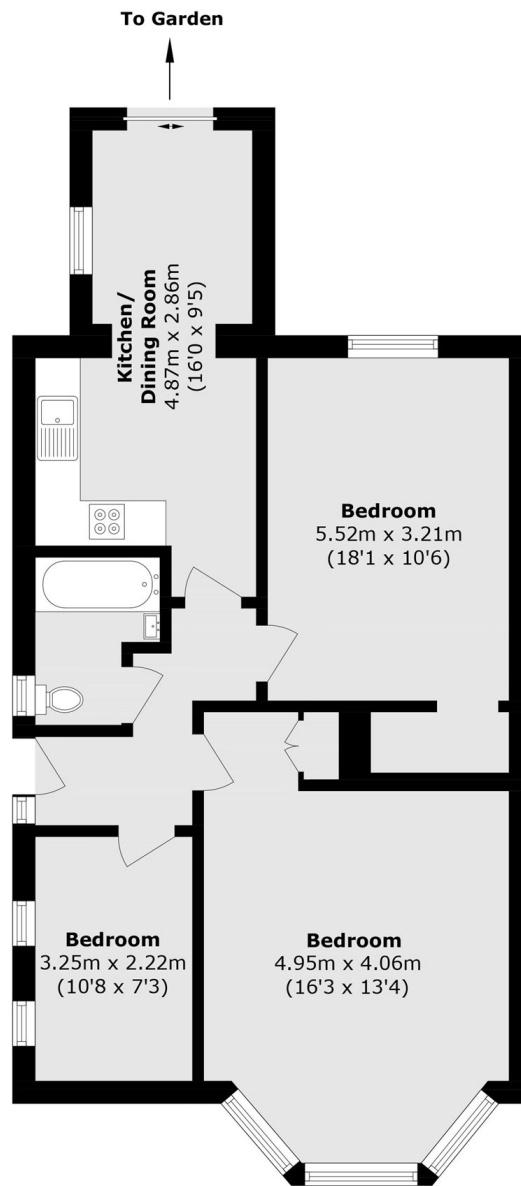
A spacious three-bedroom lower ground floor Victorian flat with a private garden, offering an excellent opportunity to modernise and create a wonderful home. The property retains period character and features well-proportioned accommodation throughout, including a generous kitchen/diner, three bedrooms, and a bathroom.

Ideally located within easy walking distance of Lee Station and a wide range of local shops, cafés, schools, and everyday amenities, the property also benefits from excellent transport links into Central London.

### Features

Chain Free  
Victorian  
Three Bed  
Garden  
Driveway  
Close To Lee Station

# Burnt Ash Hill, London, SE12



Total area (approx.): 69.7 sq. m (750.2 sq. ft)