

40 EATON ROAD

APPLETON OX13 5JH

40 Eaton Road

Appleton OX13 5JH

Located in the desirable village of Appleton, this attractive family home offers exceptional, stylish and beautifully presented living space across two floors and is complemented perfectly by the generous garden, two driveways and single garage.

The landscaped gardens provide a most attractive setting featuring a high degree of privacy, well-tended generous lawn, mature trees, and vibrant flower borders. The wonderful patio areas provide a superb spot for alfresco entertaining and the whole is a safe space for children and pets alike. The two driveways provide ample private parking plus garage and side pedestrian access to the garden.



4



3



3

GUIDE PRICE

£1,000,000

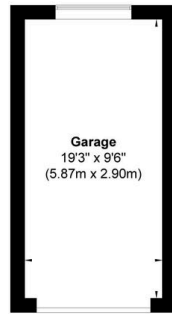


Generous

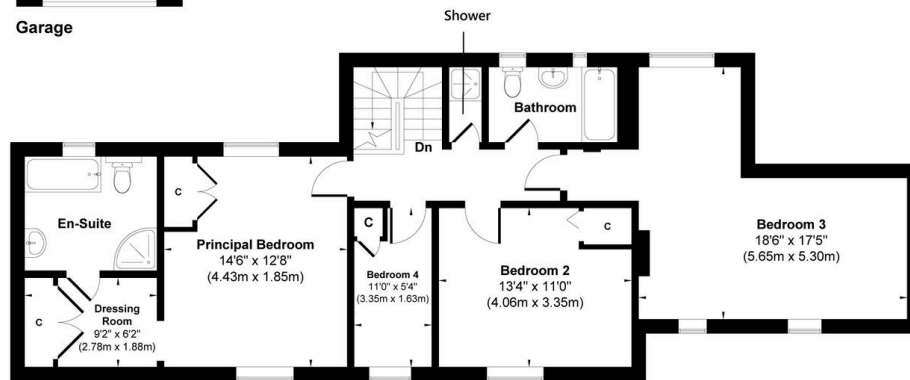




Approximate Gross Internal Area
 Main House = 195.66 sq.m / 2106 sq.ft
 Garage = 16.99 sq.m / 183 sq.ft
Total = 212.65 sq.m / 2289 sq.ft



Garage



First Floor



Ground Floor

Illustration for identification purpose only, measurements approximate and not to scale.

Council Tax:

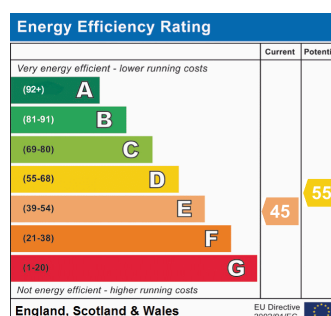
Band G - £4,333.30

Parking:

Single Garage & Two Driveways

Local Authority:

Vale of White Horse District Council

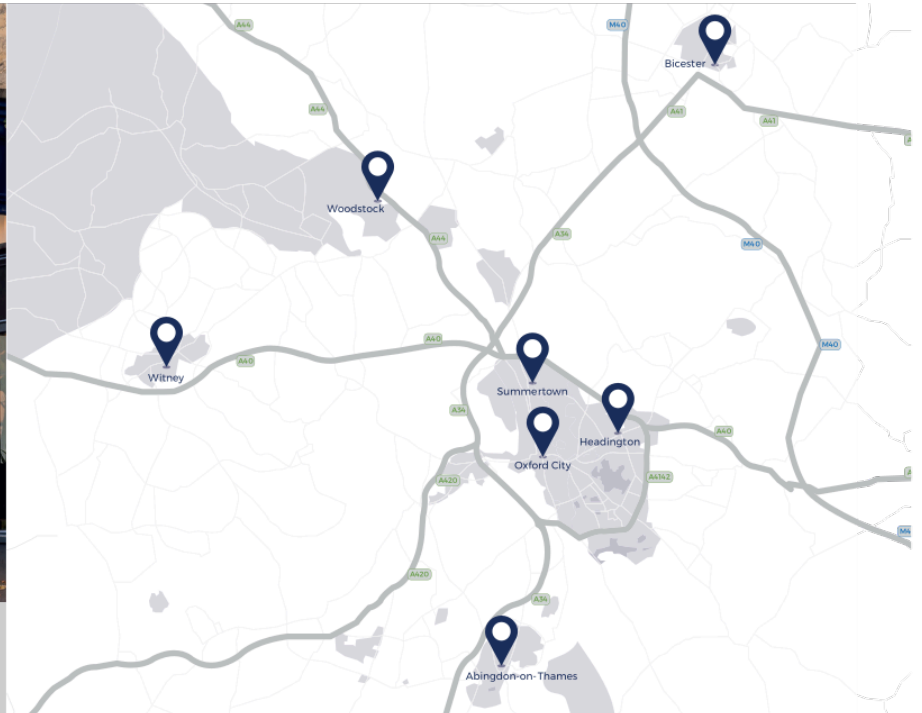


LOCATION

Appleton is a thriving village with an array of amenities including a village pub, community shop, village hall, playground and sports field plus cricket, tennis and football clubs. A village hall is home to an array of societies and clubs. There is a highly regarded primary school and excellent transport links with easy access to the A34, M4 and M40. It is only 12 miles from Didcot Parkway Rail station which has a regular high-speed service to London Paddington in approximately 45 minutes. Oxford Parkway is 10 miles away with regular trains running to London Marylebone. The university city of Oxford lies just 6 miles away. Nearby Abingdon and Witney offer a wider range of shopping and leisure facilities. The property is well placed for the Oxford and Abingdon schools along with nearby St Hugh's and Cokethorpe schools.



OUR NETWORK OF OFFICES ACROSS OXFORDSHIRE



Every office has access to **every buyer** registered across our network of seven offices.

Sharing a single database of buyers ensures maximum exposure for our clients.

Witney Sales

10 Market Square
Witney
Oxfordshire
OX28 6BB

t: 01993 776 775
e: witney@breckon.co.uk



FROM LEFT: Alex Chappell,
Sarah Thomas, Julia Briggs,
Rose McDermott and John Bouwer

Summertown

t: 01865 310 300 (sales)
t: 01865 20 1111 (letting)
e: summertown@breckon.co.uk

Oxford City Centre

t: 01865 244 735 (sales)
t: 01865 20 1111 (letting)
e: post@breckon.co.uk

Headington

t: 01865 750 200 (sales)
t: 01865 763 999 (letting)
e: headington@breckon.co.uk

Abingdon-on-Thames

t: 01235 550 550 (sales)
t: 01235 554 040 (letting)
e: abingdon@breckon.co.uk

Woodstock

t: 01993 811 881 (sales)
t: 01993 810 100 (letting)
e: woodstock@breckon.co.uk

Bicester

t: 01869 242 423 (sales & letting)
e: bicester@breckon.co.uk

New Homes

t: 01865 261 222
e: newhomes@breckon.co.uk

Land Team

t: 01865 558 999
e: land@breckon.co.uk

Letting and Property Management

t: 01865 20 1111
e: lettings@breckon.co.uk

Creative Department

t: 01865 310 300
e: creative@breckon.co.uk

Bespoke by Breckon

t: 01865 765 555
e: bespoke@breckon.co.uk



EST. 1947



breckon.co.uk

IMPORTANT NOTICE: These particulars are for information purposes only and do not in whole or in part constitute or form part of any offer or contract, nor should any statement obtained herein be relied upon as a statement or representation of fact. Breckon & Breckon do not test whether the services connected to the property, heating systems and domestic appliances are in working order. We therefore recommend that the purchaser obtains verification from their surveyor or solicitor. Whilst every attempt has been made to ensure the accuracy of the floor plans contained here, measurements of doors, windows and rooms are approximate and no responsibility is taken for any error, omission or mis-statement. These plans are for representation purposes only as defined by the RICS code of measuring practice and should be used as such by any possible purchaser.