



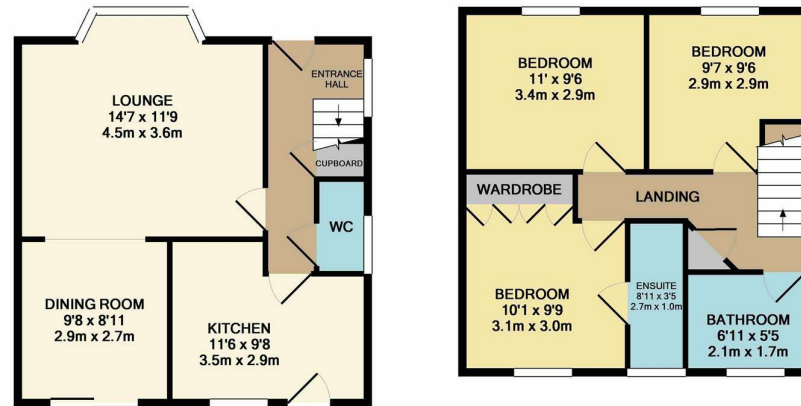
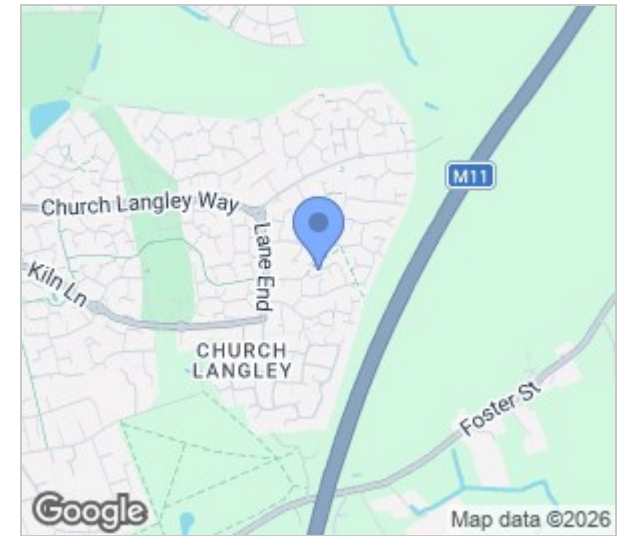
Chelsea Gardens, Harlow, CM17 9RY
Guide Price £450,000

3 2 2 C

Chelsea Gardens, Harlow, CM17 9RY

****Guide Price £450,000 - £465,000**** Offered CHAIN FREE is this three bedroom detached family home with a garage and driveway found at the end of a quiet cul-de-sac in Chelsea Gardens. The property comprises an entrance hallway leading to a large lounge which opens onto the dining room, a fitted kitchen with a range of wall and base units and a cloakroom/WC. On the first floor are three bedrooms, with fitted wardrobes and an en-suite to the master, plus a family bathroom with a white three piece suite. The rear garden is mainly laid to patio with side access.

Chelsea Gardens is found just off Lane End, with local schools, shops and open fields close by. Harlow Mill Train Station is only a 9 minute drive with direct trains to London and Cambridge. Chain Free.



GROUND FLOOR
APPROX. FLOOR
AREA 452 SQ.FT.
(42.0 SQ.M.)

1ST FLOOR
APPROX. FLOOR
AREA 439 SQ.FT.
(40.8 SQ.M.)

CG/REYLANDJOHNSON
TOTAL APPROX. FLOOR AREA 891 SQ.FT. (82.8 SQ.M.)

Whilst every attempt has been made to ensure the accuracy of the floor plan contained here, measurements of doors, windows, rooms and any other items are approximate and no responsibility is taken for any error, omission, or mis-statement. This plan is for illustrative purposes only and should be used as such by any prospective purchaser. The services, systems and appliances shown have not been tested and no guarantee as to their operability or efficiency can be given
Made with Metropix ©2019



Energy Efficiency Rating		Environmental Impact (CO ₂) Rating	
Current	Potential	Current	Potential
<p>Very energy efficient - lower running costs</p> <p>(92 plus) A</p> <p>(81-91) B</p> <p>(69-80) C</p> <p>(55-68) D</p> <p>(39-54) E</p> <p>(21-38) F</p> <p>(1-20) G</p> <p>Not energy efficient - higher running costs</p>			
	69		83
<p>Very environmentally friendly - lower CO₂ emissions</p> <p>(92 plus) A</p> <p>(81-91) B</p> <p>(69-80) C</p> <p>(55-68) D</p> <p>(39-54) E</p> <p>(21-38) F</p> <p>(1-20) G</p> <p>Not environmentally friendly - higher CO₂ emissions</p>			
England & Wales		England & Wales	
EU Directive 2002/91/EC		EU Directive 2002/91/EC	

These particulars, whilst believed to be accurate are set out as a general outline only for guidance and do not constitute any part of an offer or contract. Intending purchasers should not rely on them as statements of representation of fact, but must satisfy themselves by inspection or otherwise as to their accuracy. No person in this firm's employment has the authority to make or give any representation or warranty in respect of the property.

T. 01279 216216 E. info@rjestateagents.co.uk

1 Acorn Mews, Harlow, Essex, CM18 6NA www.rjestateagents.co.uk