

## Lancaster Gate, W2

£20,000 Per week

**Dexters**



## Lancaster Gate, W2

An immaculate and beautifully designed four bedroom apartment of 2,801sq.ft in one of London's most desirable addresses. Benefiting with private parking, gym, spa, swimming pool and 24 Hour Concierge.

The property features grand ceiling heights on the ground floor, a generous formal reception with floor to ceiling windows, and direct access to the gardens. The lower ground hosts a sleek bespoke kitchen and living/dining area, ideal for entertaining or family living.

Each of the four double bedrooms are spacious with ample storage and en-suite bathrooms. The principal suite benefits a walk-in dressing area and access to the private patio.

The Lancaster's is one of London's most prestigious residential developments, set behind an elegant, Grade II-listed white stucco facade overlooking Hyde Park. This iconic address seamlessly blends period grandeur with cutting-edge contemporary interiors, offering a truly exceptional standard of living.

### Features

5 minutes from Lancaster Gate Station, a short stroll to the boutiques

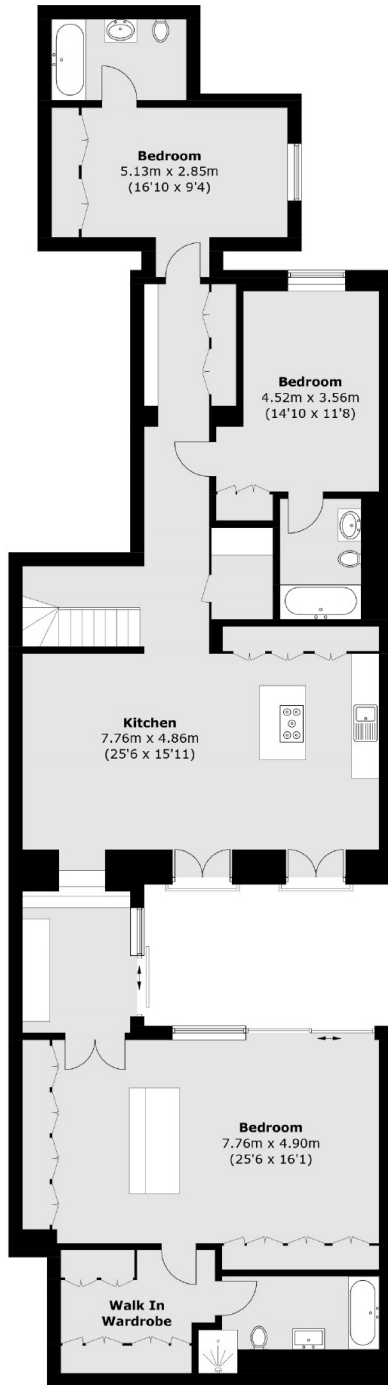
- 4 Double Bedrooms
- 4 Bathrooms
- Private Patio
- 24 Hour Concierge
- Gym/Spa/Swimming Pool
- Private Parking







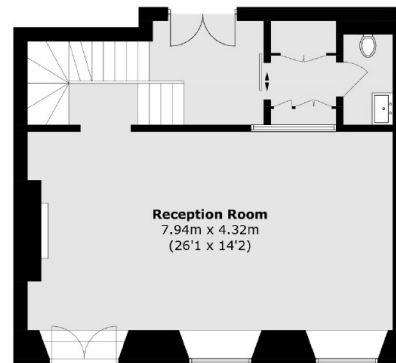
# Lancaster Gate, London, W2



**Lower Ground Floor**



**First Floor**



**Ground Floor**

Total area (approx.): 260.4 sq. m (2,802.8 sq. ft)