



Guide Price
£275,000

Freehold

3x  1x  1x 

Braunstone House,
Lugley Street, Newport,
Isle of Wight, PO30

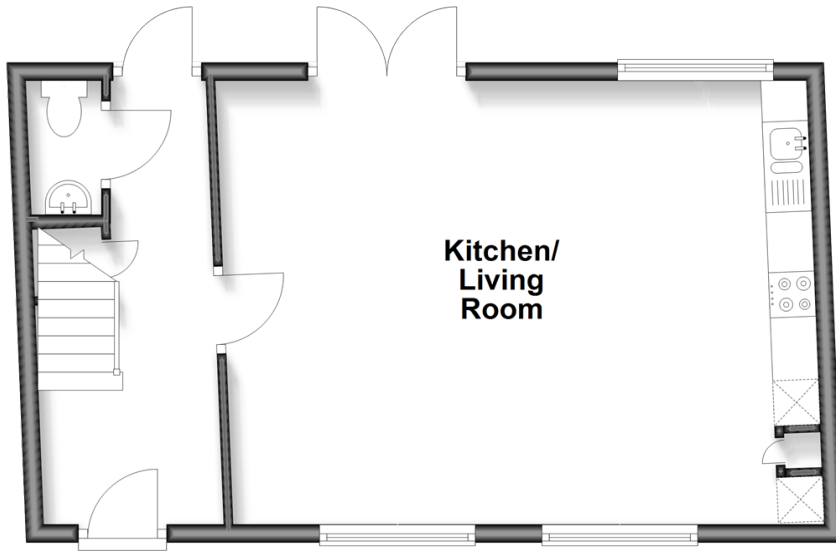
OVER 60?

Secure this property
for up to **59% less!**

Pittis 
Helping you move forwards

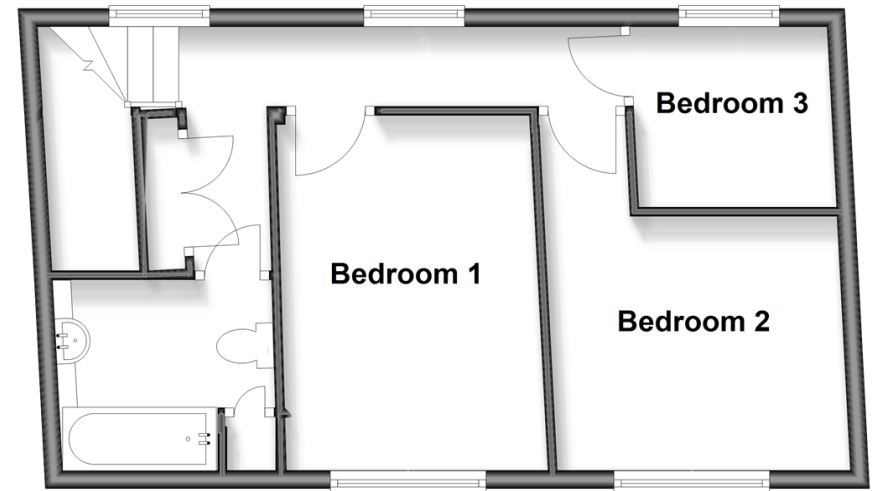
Ground Floor

Approx. 41.7 sq. metres (449.2 sq. feet)



First Floor

Approx. 42.2 sq. metres (453.8 sq. feet)



Accommodation

GROUND FLOOR

Hall

Cloakroom

Kitchen / Living Room: 20'9 x 16'0
(6.33m x 4.88m)

Family Bathroom

Bedroom 1: 12'10 x 9'1 (3.91m x 2.77m)

Bedroom 2: 10'10 x 9'9 (3.30m x
2.97m)

Bedroom 3: 6'7 x 6'6 (2.01m x 1.98m)

FIRST FLOOR

Landing

OUTSIDE

Rear Garden



Main features

- Fully re-furbished terraced town house with lots of character
- Centrally located to all the amenities of Newport
- Open plan kitchen/living room
- Spacious enclosed rear garden
- Ground floor cloakroom and first floor family bathroom



Nearest Schools

Primary Schools: Nodehill Middle School 0.2 miles, Downside Middle School 0.5 miles, Christ the King College 0.7 miles

Secondary Schools: St George's School 0.7 miles,

Transport Information

Train Stations: Smallbrook Junction 5.9 miles, Ryde St. Johns Road 6.3 miles, Ryde Esplanade 6.4 miles

Address

Braunstone House, Lugley Street, Newport, Isle of Wight, PO30

Directions

For directions to this property please contact us.



Call Newport Branch 01983 528888 ■ pittis.co.uk



- Legal advice should be taken to verify fixtures/fittings, planning, alterations and/or lease details
- Appliances & services are untested, dimensions are approximate and floor plans are not to scale
- Through a Homewise Home For Life Plan people aged 60+ can secure this property for up to 59% less, by purchasing a Lifetime Lease

EPC RATING

CURRENT: E(50) POTENTIAL: C(75)

60324070/20260209/SC/NH