



**Lancaster Mews, W2**

**£1,195,000**

**Dexters**



## Lancaster Mews, W2

A charming two bedroom mews house on a pretty cobbled mews located next to Hyde Park.

Arranged over two floors, the property offers a large open plan kitchen living area with high ceilings that leads off to a private patio. There are two bathrooms located on the ground floor and plenty of built-in storage throughout the house.

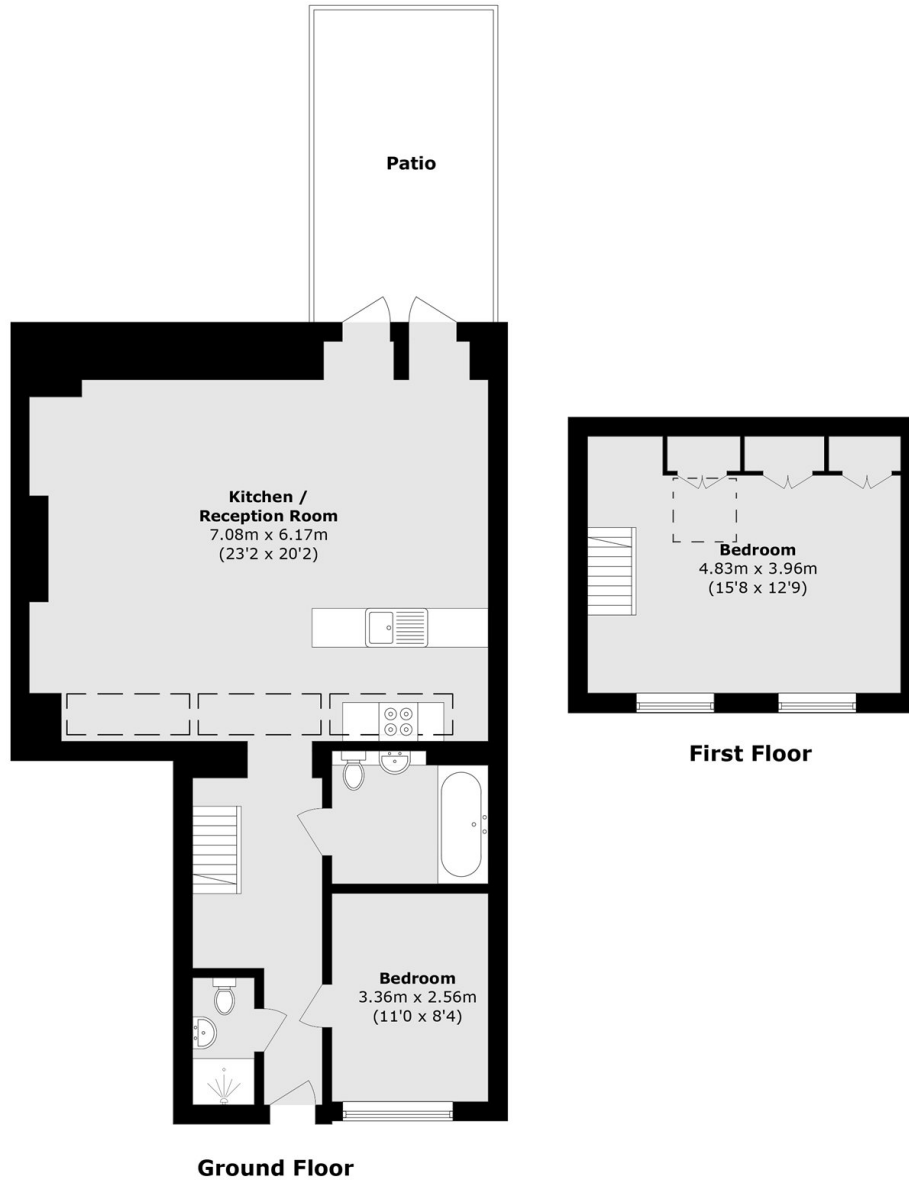
Lancaster Mews is a beautiful mews perfectly located to enjoy all the amenities of Bayswater and Hyde Park. There are multiple shops, bars and restaurants nearby with Kensington Gardens and Hyde Park only a short walk away. There are also great transport links from Lancaster Gate or Paddington station.

### Features

- Two Double Bedrooms
- Mews House
- Private Patio
- Two Bathrooms
- High Ceilings
- Hyde Park



# Lancaster Mews, London, W2



Total area (approx.): 88.3 sq. m (950.5 sq. ft)