



Connells

Lawn Road  
Eastleigh



## Property Description

This extremely spacious and extended four-bedroom semi-detached home in Eastleigh offers versatile and well-proportioned accommodation, ideal for modern family living.

A driveway to the front provides convenient off-road parking and sets the tone for this welcoming home.

Upon entering, the entrance hall leads through to a generous lounge, complete with sliding doors opening into a bright conservatory-perfect for relaxing or entertaining.

There is also a separate dining room which flows seamlessly into a large kitchen, offering ample workspace and storage.

Further benefits to the ground floor include a separate utility room with access to the rear garden, a convenient downstairs cloakroom, and a fourth bedroom or study-ideal for flexible living arrangements.

Upstairs, the property continues to impress with three well-sized bedrooms and a family bathroom.

To the rear, the good-sized garden features a patio area, lawn, pond, shed, and an outbuilding, providing a fantastic outdoor space for both relaxation and practical use.

Situated in a highly sought-after location, the property is within easy reach of a wide range of local amenities, reputable schools, and excellent transport links, making it a perfect choice for growing families.

## Entrance Hall

Double glazed window to front aspect.  
Radiator. Under stairs cupboard.

## Lounge

Double glazed window to side aspect. Double glazed sliding doors to rear. Radiator. Electric fireplace.

## Conservatory

Double glazed windows to rear and side aspect. Double glazed door to garden. Electrics.

## Dining Room

Double glazed window to front aspect. Open plan to kitchen. Radiator.

## Kitchen

Double glazed window to rear aspect. Fitted kitchen with wall and base units. Space for appliances.

## Utility

Double glazed window to rear. Double glazed door to garden. Storage cupboard. Space for washing machine and tumble dryer.

## Cloakroom

Toilet.

## Study/ 4th Bedroom

Double glazed window to front aspect. Radiator.

## Landing

Storage cupboard. Loft access.

## Bedroom 1

Double glazed window to rear. Built in cupboards. Radiator.

## Bedroom 2

Double glazed window to front aspect. Built in cupboards. Radiator.

## Bedroom 3

Double glazed window to rear aspect. Radiator.

## Bathroom

Double glazed window to side aspect. Toilet. Vanity sink. Shower over bath. Heated towel rail. Partially tiled.

## Outside

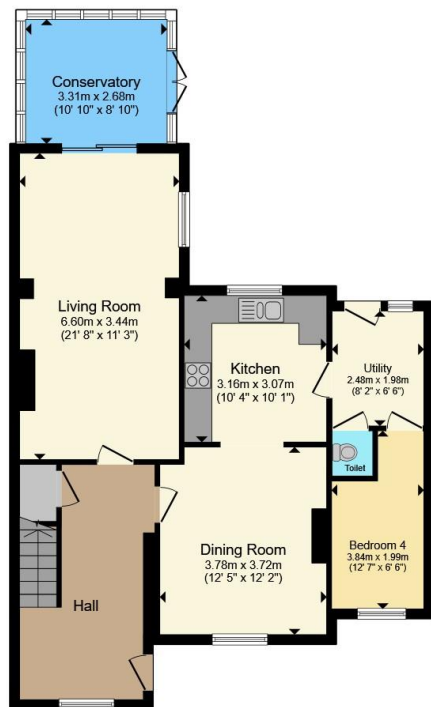
To The front. Driveway. Lawn area. Path to front door.

To the rear. Patio area. Lawn area. Pond. Outside tap. Shed. Outbuilding.

## Outbuilding

Cladded exterior. Electrics.





**Ground Floor**



**First Floor**

Total floor area 133.0 m<sup>2</sup> (1,432 sq.ft.) approx

This floor plan is for illustrative purposes only. It is not drawn to scale. Any measurements, floor areas (including any total floor area), openings and orientation are approximate. No details are guaranteed, they cannot be relied upon for any purpose and they do not form part of any agreement. No liability is taken for any error, omission or misstatement. A party must rely upon its own inspection(s). Powered by [www.propertybox.io](http://www.propertybox.io)



To view this property please contact Connells on

**T 02380 618 343**  
**E [eastleigh@connells.co.uk](mailto:eastleigh@connells.co.uk)**

19 Market Street  
 EASTLEIGH SO50 5RH

EPC Rating: Council Tax  
 Awaited Band: C

**view this property online [connells.co.uk/Property/EGH309464](http://connells.co.uk/Property/EGH309464)**

Tenure: Freehold



1. MONEY LAUNDERING REGULATIONS Intending purchasers will be asked to produce identification documentation at a later stage and we would ask for your co-operation in order that there will be no delay in agreeing the sale. 2. These particulars do not constitute part or all of an offer or contract. 3. The measurements indicated are supplied for guidance only and as such must be considered incorrect. Potential buyers are advised to recheck measurements before committing to any expense. 4. We have not tested any apparatus, equipment, fixtures, fittings or services and it is in the buyers interest to check the working condition of any appliances.

Connells Residential is registered in England and Wales under company number 1489613, Registered Office is Cumbria House, 16-20 Hockliffe Street, Leighton Buzzard, Bedfordshire, LU7 1GN. VAT Registration Number is 500 2481 05.

**See all our properties at [www.connells.co.uk](http://www.connells.co.uk) | [www.rightmove.co.uk](http://www.rightmove.co.uk) | [www.zoopla.co.uk](http://www.zoopla.co.uk)**

Property Ref: EGH309464 - 0002