



De Freville Court, Great Shelford, Cambridge, CB22 5LH

CHEFFINS

De Freville Court

De Freville Road, Great Shelford,
CB22 5LH

A well presented 2 bedroom ground floor apartment within a highly sought after and well served village. The accommodation comprises entrance hall, generous living room, kitchen, 2 bedrooms and bathroom. The property further benefits from a single garage and communal gardens. We regret no sharers. Unfurnished. Available 13/07/2026. EPC: C and Council Tax Band: B.

LOCATION

Great Shelford, a picturesque village in Cambridgeshire, features excellent transport links and diverse amenities. Direct rail services from its station connect to Cambridge and London, facilitating easy commuting. The village offers various shops, eateries, and recreational facilities ensuring a high quality of life for its residents.



£1,400 PCM



**ENTRANCE HALL**

2 built in cupboards and doors to the living room, kitchen, bedrooms and bathroom off.

KITCHEN

base and wall units, work tops, sink with window to front aspect above, integrated oven and electric hob with extractor above, freestanding fridge freezer, slimline dishwasher and washing machine and gas central heating boiler.

LIVING ROOM

dual aspect with large window to front aspect and window and patio doors to rear aspect.

BEDROOM 1

window to rear aspect.

BEDROOM 2

window to rear aspect.

BATHROOM

shower over bath with small glass shower screen and shower curtain, wc, wash basin with vanity unit below and mirrored cabinet above, heated towel rail and window to front aspect.

OUTSIDE

small patio off living room to the rear, communal gardens, single garage within garage block and communal bin store.

LETTING AGENT NOTES

For more information on this property please refer to the Material Information brochure on our Website.

Term - Minimum 12 month tenancy

Holding Deposit - £323

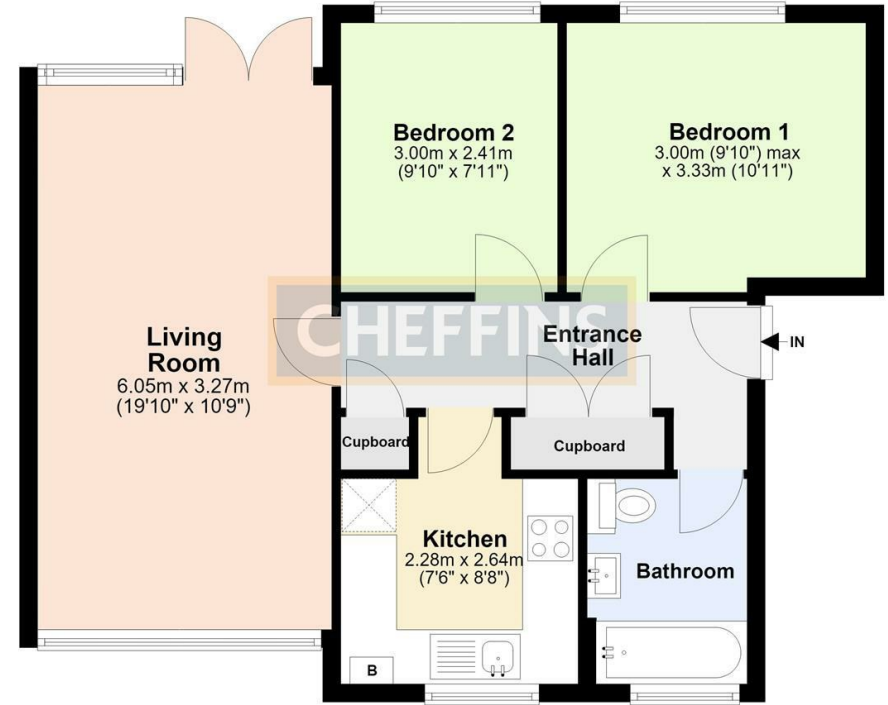
Deposit - £1615





Energy Efficiency Rating		
	Current	Potential
Very energy efficient - lower running costs		
(02 plus) A		
(81-91) B		
(69-80) C		
(55-68) D		
(39-54) E		
(21-38) F		
(1-20) G		
Not energy efficient - higher running costs		
England & Wales	EU Directive 2002/91/EC	

Ground Floor
Approx. 57.4 sq. metres (618.0 sq. feet)



Total area: approx. 57.4 sq. metres (618.0 sq. feet)

Agents note:

For more information on this property please refer to the Material Information Brochure on our website.

Clifton House, 1-2 Clifton Road, Cambridge, Cambridgeshire, CB1 7EA | 01223 271916 | cheffins.co.uk

IMPORTANT: we would like to inform prospective purchasers that these sales particulars have been prepared as a general guide only. A detailed survey has not been carried out, nor the services, appliances and fittings tested. Room sizes should not be relied upon for furnishing purposes and are approximate. If floor plans are included, they are for guidance only and illustration purposes only and may not be to scale. If there are any important matters likely to affect your decision to buy, please contact us before viewing the property.

