



Nightingale Lane, SW12

£2,750 Per week

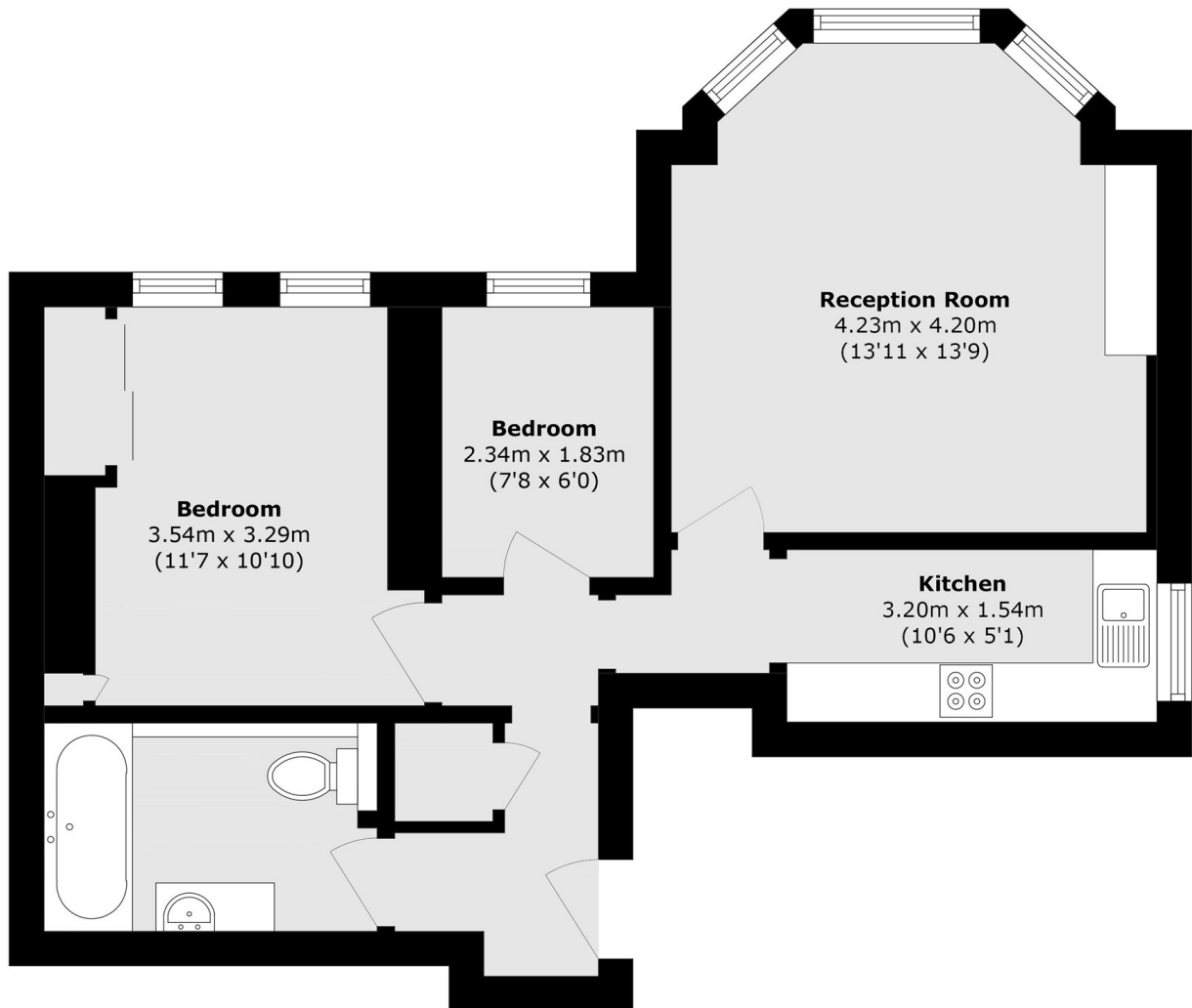
This one bedroom flat with a study is set within a Victorian conversion on Nightingale Lane, in the sought-after Nightingale Triangle. Bright and airy throughout, the property is ideal for a professional couple needing space to work from home.

Nightingale Lane boasts a great variety of bars, shops, and restaurants, and is just a short walk from Clapham South Underground Station. Both Northcote Road and Abbeville Village are also within a short walk, as are Wandsworth Common and Clapham Common.

Features

- Period Conversion
- One Double Bedrooms
- Office/Study Room
- Separate Reception Room
- Built-In Storage
- Between the Commons

Nightingale Lane, London, SW12



Total area (approx.): 50.8 sq. m (546.8 sq. ft)