



## 36 Hathaway Court Alcester Road, Stratford-Upon-Avon

Guide Price **£75,000**

## 36 Hathaway Court Alcester Road

Stratford-Upon-Avon

**\*\*Guide Price Range £80,000 - £90,000\*\*** Well presented one bed apartment for over 60s in central Stratford upon Avon. Communal gardens, lounge, laundry, parking, 24hr support, and close to amenities.

Council Tax band: D

Tenure: Leasehold

EPC Energy Efficiency Rating:

EPC Environmental Impact Rating:

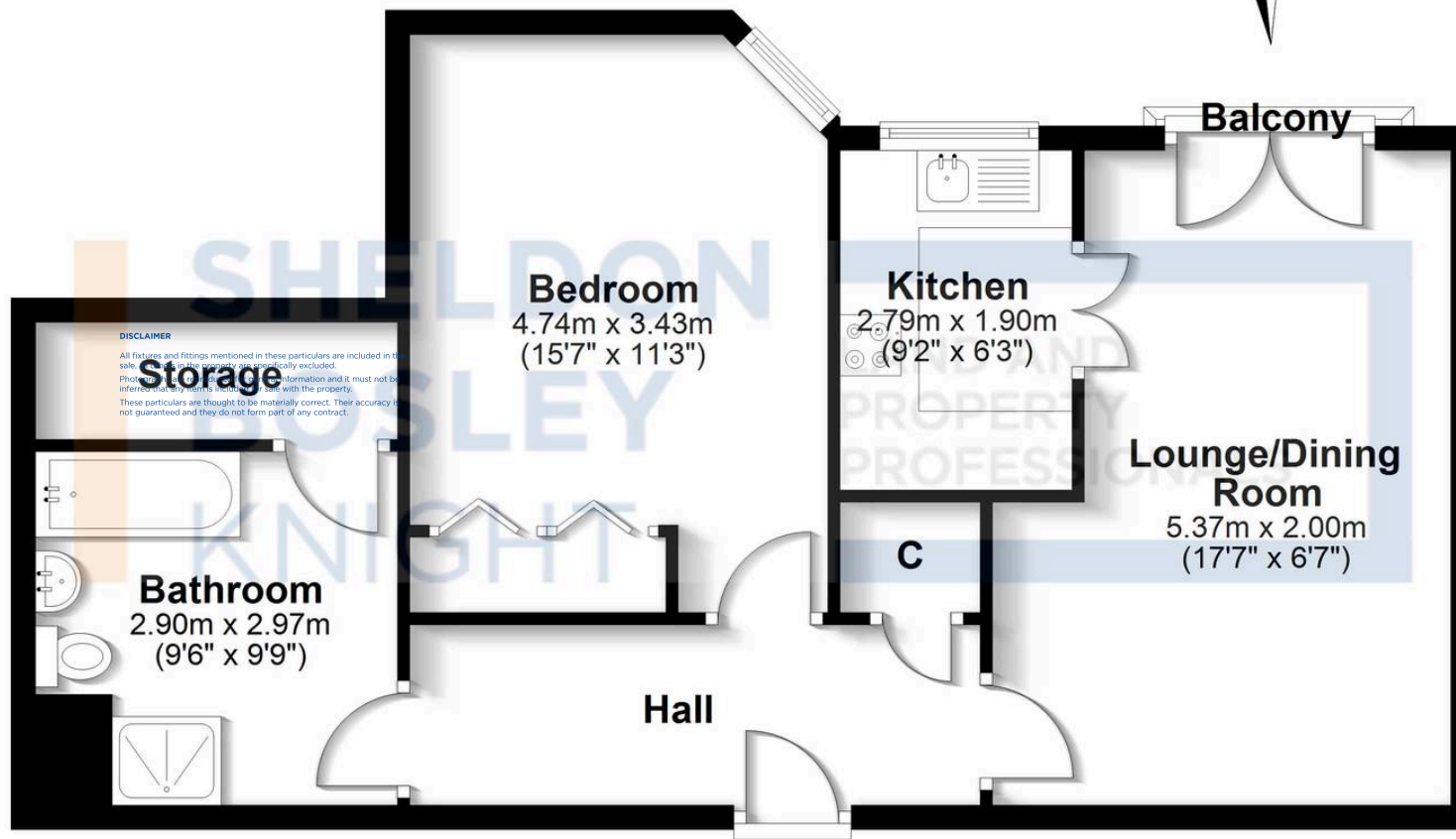
- Popular Retirement Complex
- Close To Town Centre & Local Amenities
- One Double Bedroom
- Lounge Diner & Separate Kitchen
- Generous Bathroom With Separate Bath & Shower
- Handy Storage
- Development Manager & 24 Hour Response System
- Communal Lounge & Laundry Room
- Minimum Age Of 60
- No Onward Chain





## Second Floor

Approx. 60.9 sq. metres (655.0 sq. feet)



Total area: approx. 60.9 sq. metres (655.0 sq. feet)

All efforts have been made to ensure the measurements are accurate on this floor plan, however these are for guidance purposes only.  
Plan produced using PlanUp.

**Sheldon Bosley Knight Stratford-Upon-Avon**

Sheldon Bosley Knight, 35-36 Rother Street - CV37 6LP

01789387887 · stratfordsales@sheldonbosleyknight.co.uk · www.sheldonbosleyknight.co.uk/

### DISCLAIMER

All fixtures and fittings mentioned in these particulars are included in the sale, all others in the property are specifically excluded.

Photographs are reproduced for general information and it must not be inferred that any item is included for sale with the property.

These particulars are thought to be materially correct. Their accuracy is not guaranteed and they do not form part of any contract.