



Hampton Court Road, KT8

£1,695 Per calendar month

This fantastic one bedroom apartment suitable for a single tenant is set within a beautiful period building, moments from Hampton Court Palace and Bridge Road. With a open plan kitchen/ lounge, lift and a good size bedroom.

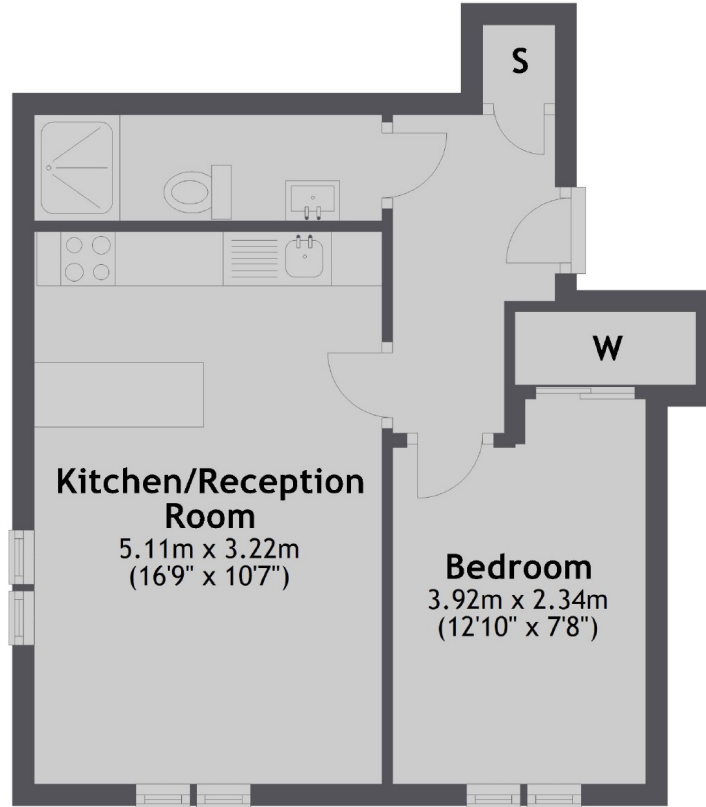
Rotary Court is a peaceful riverside development in Hampton Court. Moments to Hampton Court Station and a short walk to Bridge Road with its great eateries and boutique shops.

Features

- Listed Period Conversion
- Lift Access
- One Double Bedroom
- Open Plan Kitchen
- Central Location
- Communal Garden

Hampton Court Road,
East Molesey, KT8

Second Floor



Total area: approx. 34.3 sq. metres (369.4 sq. feet)