



Connells

Flat 1 Patna Place
Plymouth



Property Description

An exciting investment opportunity to acquire this one bedroom converted flat, situated in a prime central location. Benefiting from one double bedroom, kitchen, lounge and shower room.

Located in the heart of the city, close to a host of local amenities such as an array of shops and restaurants, whilst being a stone's throw from the city centre, Plymouth University, the historic Barbican and main transport links.

The accommodation comprises, a spacious lounge, kitchen, a good-sized double bedroom and shower room.

This property offers an attractive opportunity to add value with a potential strong return.

BOOK YOUR VIEWINGS NOW!

Lounge

14' 8" maximum x 10' 11" maximum (4.47m maximum x 3.33m maximum)

Kitchen

15' 10" maximum x 7' 7" maximum (4.83m maximum x 2.31m maximum)

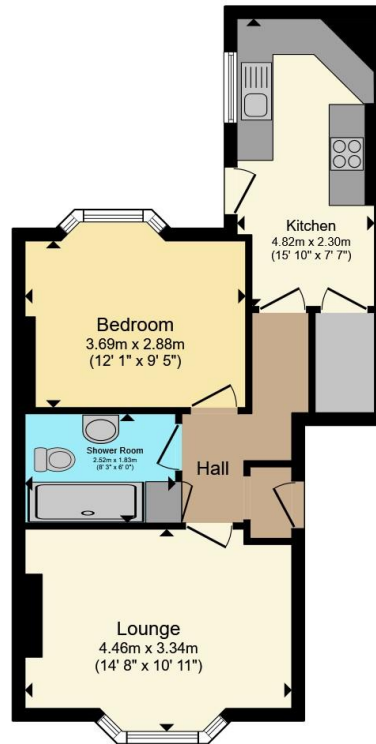
Bedroom

12' 1" maximum x 9' 5" maximum (3.68m maximum x 2.87m maximum)

Shower Room







Total floor area 48.6 m² (523 sq.ft.) approx

This floor plan is for illustrative purposes only. It is not drawn to scale. Any measurements, floor areas (including any total floor area), openings and orientation are approximate. No details are guaranteed, they cannot be relied upon for any purpose and they do not form part of any agreement. No liability is taken for any error, omission or misstatement. A party must rely upon its own inspection(s). Powered by www.propertybox.io



To view this property please contact Connells on

T 01752 674 467
E plymouth@connells.co.uk

32 Mannamead Road
 PLYMOUTH PL4 7AA

EPC Rating: D

Council Tax
 Band: A

Service Charge: Ask
 Agent

Ground Rent:
 Ask Agent

Tenure: Leasehold

view this property online connells.co.uk/Property/PLH313505

This is a Leasehold property. We are awaiting further details about the Term of the lease. For further information please contact the branch. Please note additional fees could be incurred for items such as Leasehold packs.



1. MONEY LAUNDERING REGULATIONS Intending purchasers will be asked to produce identification documentation at a later stage and we would ask for your co-operation in order that there will be no delay in agreeing the sale. 2. These particulars do not constitute part or all of an offer or contract. 3. The measurements indicated are supplied for guidance only and as such must be considered incorrect. Potential buyers are advised to recheck measurements before committing to any expense. 4. We have not tested any apparatus, equipment, fixtures, fittings or services and it is in the buyers interest to check the working condition of any appliances.

Connells Residential is registered in England and Wales under company number 1489613, Registered Office is Cumbria House, 16-20 Hockliffe Street, Leighton Buzzard, Bedfordshire, LU7 1GN. VAT Registration Number is 500 2481 05.

See all our properties at www.connells.co.uk | www.rightmove.co.uk | www.zoopla.co.uk

Property Ref: PLH313505 - 0002