

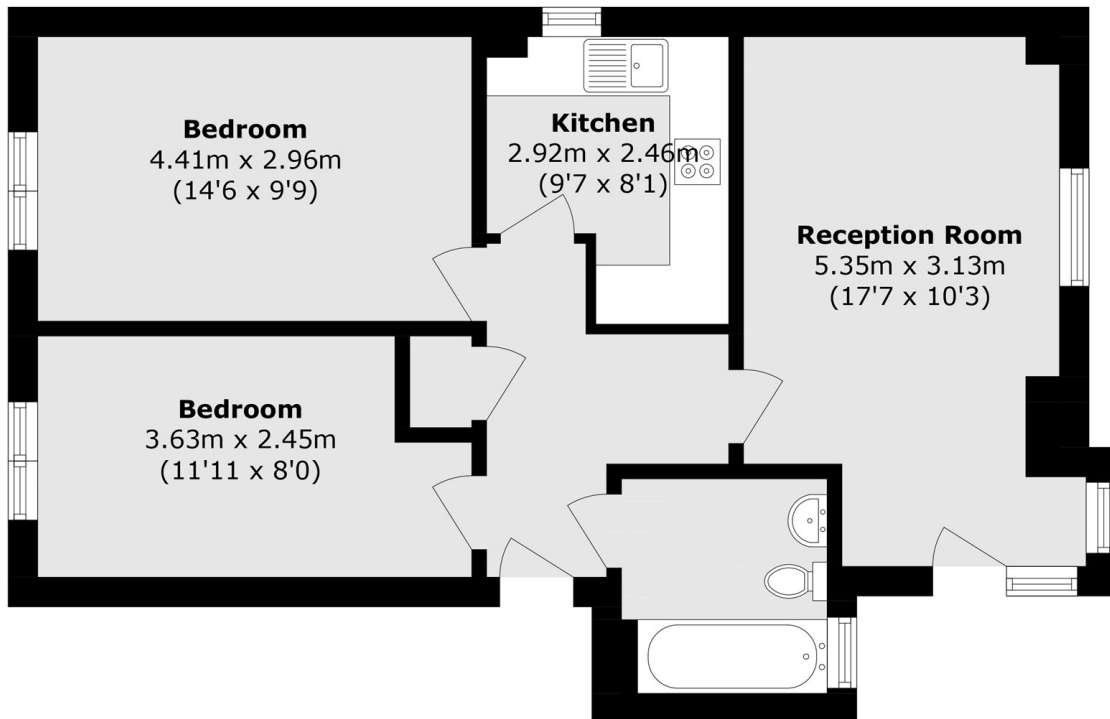


## PORTSMOUTH MEWS, E16

£2,000 pcm

A two bedroom apartment with separate kitchen featuring wood floors and built-in storage located in a Waterside Development.

- Two Bedrooms
- One Bathrooms
- Wood Flooring
- Built In Storage
- Gated Development
- Waterside Location



Total area (approx.): 59.4 sq. m ( 639.4 sq. ft)

**LiFE RESIDENTIAL**

16 Royal Crest Avenue,  
London, E16 2TQ  
Sales: 020 3846 3332  
Lettings: 020 3846 3311

Energy Rating: . We aim to make our particulars both accurate and reliable. However they are not guaranteed; nor do they form part of an offer or contract. If you require clarification on any points then please contact us, especially if you're traveling some distance to view. Please note that appliances and heating systems have not been tested and therefore no warranties can be given as to their good working order.