



South Park Road, SW19

£2,000 Per calendar month

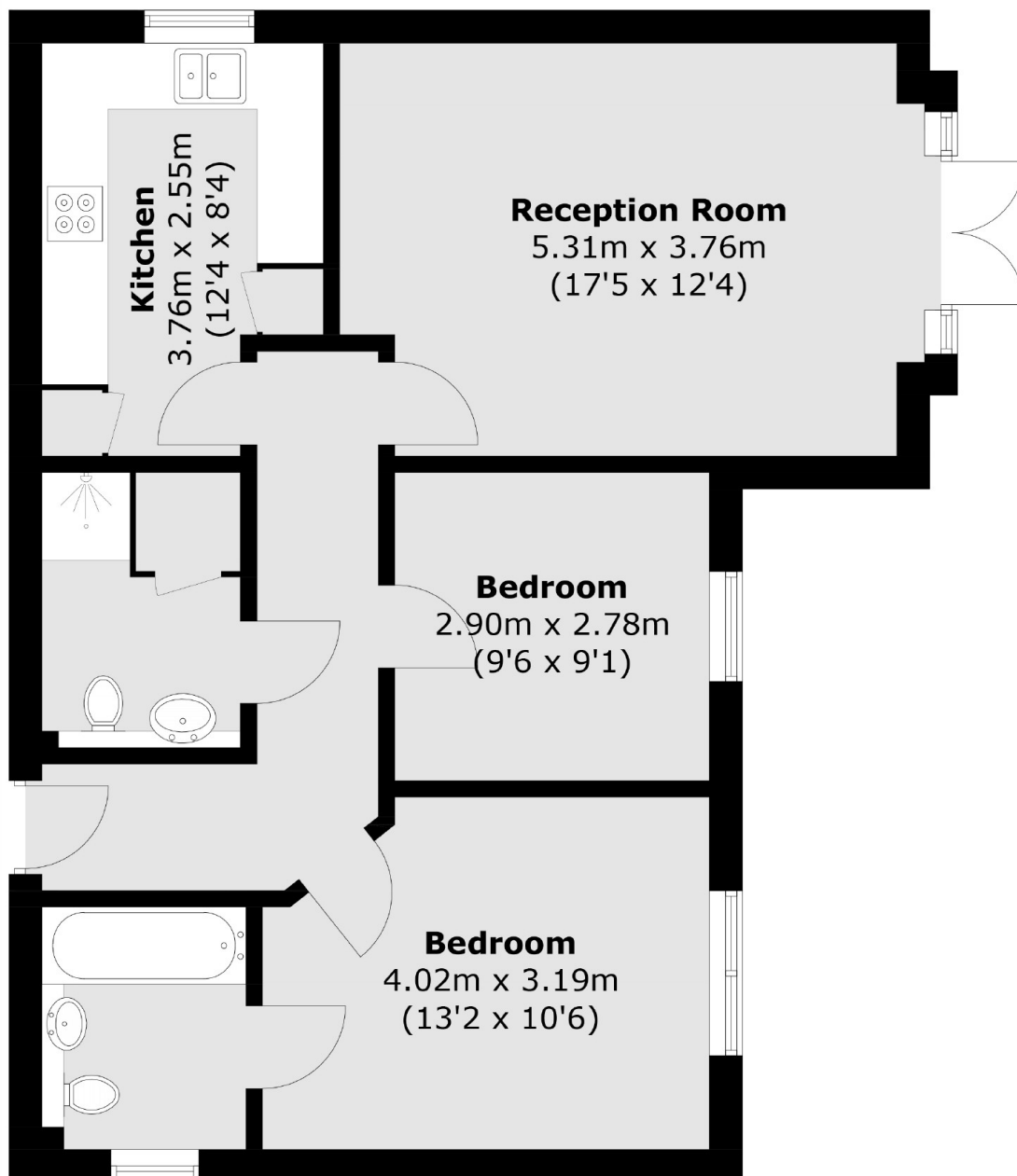
A ground floor, two bedroom, two bathroom property with a separate kitchen and living room that has french doors leading directly to the rear communal garden.

South Park Road is a popular tree lined road next to South Park Gardens. This area has a fantastic selection of High Street brand shops, popular restaurants and excellent transport links just a short walk away.

Features

- Two Bedrooms
- Two Bathrooms
- Ground Floor
- Separate Kitchen
- Parking
- Communal Garden

South Park Road, London, SW19



Total area (approx.): 68.1 sq. m (733.0 sq. ft)

Dexters

Wimbledon
12 The Broadway
London
SW19 1RF
Lettings
020 8545 8581

Energy Rating: C. We aim to make our particulars both accurate and reliable. However they are not guaranteed; nor do they form part of an offer or contract. If you require clarification on any points then please contact us, especially if you're traveling some distance to view. Please note that appliances and heating systems have not been tested and therefore no warranties can be given as to their good working order.

 **RICS** | Regulated
Estate Agent
and Letting Agent

[dexters.co.uk](https://www.dexters.co.uk)