



Warwick Lane  
Kensington W14



A stunning and brand-new one-bedroom apartment set within the prestigious McLaren House, a luxury portered development in the heart of Kensington.



## Accommodation and Amenities

- MODERN DEVELOPMENT
- PRIVATE BALCONY
- COMMUNAL GARDENS
- EXCELLENT TRANSPORT LINKS



---

Boasting 691 sq. ft. of beautifully designed living space, this exceptional home features state-of-the-art appliances, bespoke joinery, and elegant finishes throughout.

The accommodation includes a spacious open-plan kitchen and reception area leading to a private west-facing balcony, a well-appointed master bedroom with plush carpeting, and a stylish bathroom with both bath and shower. Hardwood flooring enhances the principal rooms, adding to the apartment's sleek and contemporary feel.

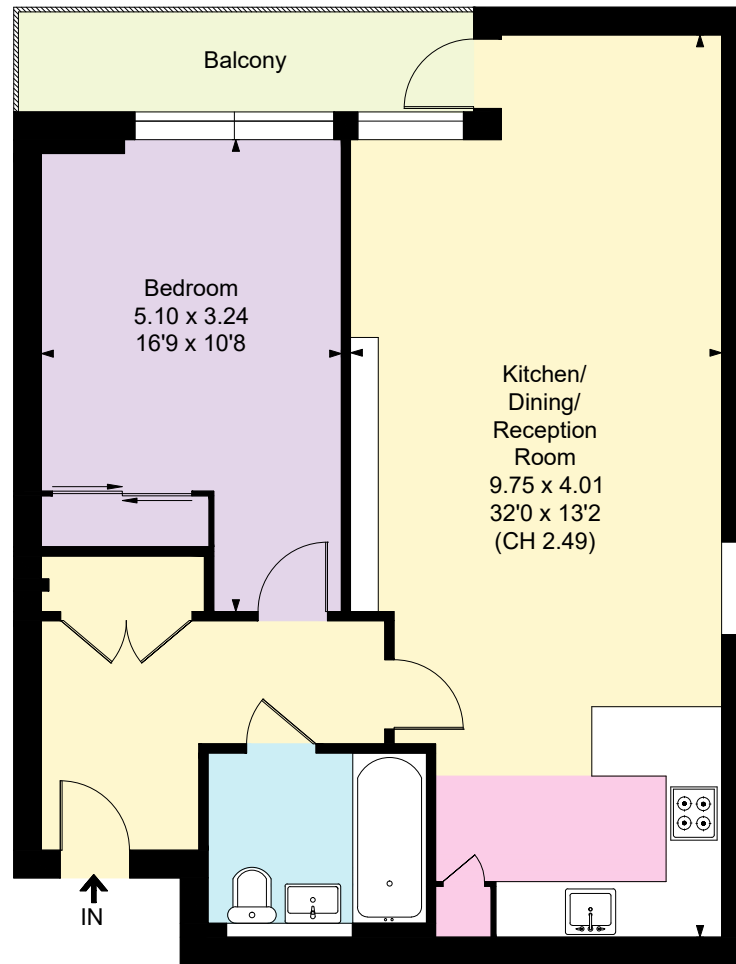
Residents of McLaren House enjoy five-star concierge service, 24-hour security, and exclusive access to top-tier amenities. Perfectly located on the south side of Holland Park, this exceptional home is just moments from High Street Kensington, offering world-class shopping, dining, and transport links.

A rare opportunity to own a luxurious residence in one of London's most sought-after locations.



## APPROXIMATE FLOOR AREA

64.22 sq m / 691 sq ft



Third Floor

## TERMS

**Asking Price** £900,000

**Tenure** Leasehold, 239 years remaining

**Service Charge** Approx £6,000 Per Annum (TBC)

**Ground Rent** Approx. £600 per annum

**EPC** B

**Council Tax** Band F

**Local Authority** The Royal Borough of Kensington and Chelsea

*Let's talk Mortgages*

Maskells has partnered with CBM Financial, an independent mortgage broker, directly authorised with specialist knowledge and whole of market access.

**CLICK HERE**

[mortgages@maskells.com](mailto:mortgages@maskells.com)

Your home may be repossessed if you do not keep up repayments on your mortgage



@maskellsea

# Maskells

105 Kensington Church Street,  
London W8 7LN  
Tel: 0207 887 2532  
[sales@maskells.com](mailto:sales@maskells.com)  
[lettings@maskells.com](mailto:lettings@maskells.com)

[maskells.com](https://www.maskells.com)