



## 7 Windsor Drive

, Wallingford, OX10 9GG

**Guide price £240,000**



A very well presented 2 bedroom apartment situated in popular Windsor drive, with allocated parking, light and spacious accommodation and well kept communal grounds



## Description

A very well presented 2 bedroom apartment situated in popular Windsor drive, with allocated parking, light and spacious accommodation and well kept communal grounds

Communal access leads to the first floor, the front door opens to a spacious hallway leading to the light and spacious living / dining room with views over the communal grounds, the kitchen is off the living area and benefits from tiled floor, electric oven and hob, built in washing machine and fridge.

There are two good sized double bedrooms, one to the front of the property with built in wardrobes and en suite shower room

Second double to the rear.

Family bathroom with shower over bath, WC and basin

Outside to

Communal gardens with playground

Allocated parking for 1 vehicle

Communal bin store

A great opportunity for a first-time buyer, someone wanting a bolt hole in the area or investor looking to add to their portfolio.

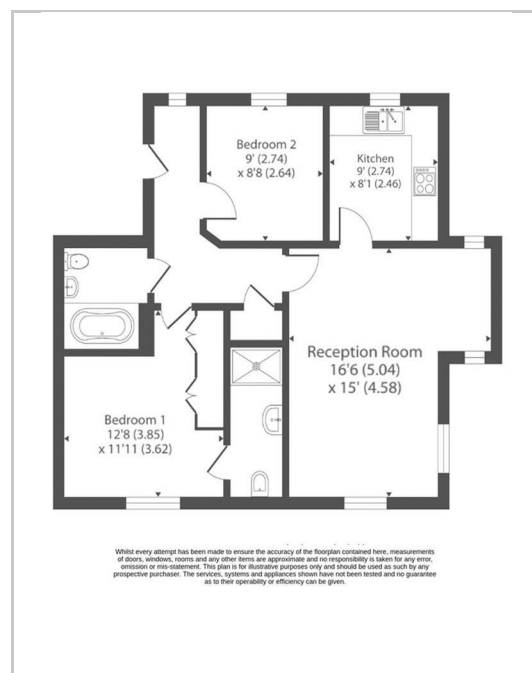
Wallingford town centre is also within a walking distance with its popular marketplace and local shops, café's, bars and restaurants along with Waitrose and nearby Lidl.

Wallingford is located within easy access to the M4, M40 and A34, Harwell campus and mainline stations can be found at nearby Cholsey and Didcot.

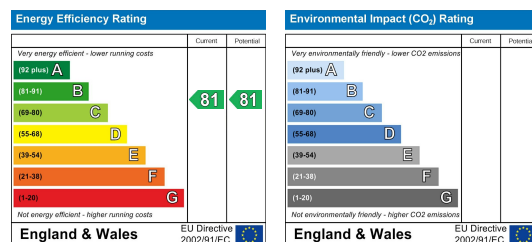
## Area Map



## Floor Plans



## Energy Efficiency Graph



These particulars, whilst believed to be accurate are set out as a general outline only for guidance and do not constitute any part of an offer or contract. Intending purchasers should not rely on them as statements of representation of fact, but must satisfy themselves by inspection or otherwise as to their accuracy. No person in this firm's employment has the authority to make or give any representation or warranty in respect of the property.