

# DAVID CHARLES

ESTATE AGENTS • VALUERS • SURVEYORS  
THE ESTATE OFFICE • 34 HIGH STREET • PINNER • MIDDLESEX HA5 5PW  
TELEPHONE 020 8866 0222 • FAX 020 8868 3544  
WEBSITE [www.david-charles.co.uk](http://www.david-charles.co.uk) • E-MAIL [pinner-sales@david-charles.co.uk](mailto:pinner-sales@david-charles.co.uk)

## ROSECROFT COURT, THE AVENUE, NORTHWOOD, HA6 2NQ



**PRICE...£279,950...LEASEHOLD**

This one bedroom first floor flat is in a small development just off The Avenue in Northwood. A well kept communal entrance leads to the property which comprises of a spacious living room open plan to the modern kitchen with a full range of appliances, a double bedroom and bathroom. There are double glazed windows, gas central heating and outside there are communal gardens and allocated and visitors parking. It is ideally located within minutes' walk of David Lloyds Riverside Health & Racquets Club and within half a mile of Northwood Town Centre offering a range of shopping facilities including Waitrose, restaurants, cafés, and the Metropolitan line train station. The property is offered with vacant possession, low outgoings and will have an extended lease on completion of the sale.

**020 8866 0222**







### **COUNCIL TAX**

London Borough of Hillingdon - Band C - £1,818.19

### **LEASE & SERVICE CHARGE**

Lease - 58 years (to be extended on completion)

Service Charge - £1,600 per annum

Ground Rent - £240 per annum

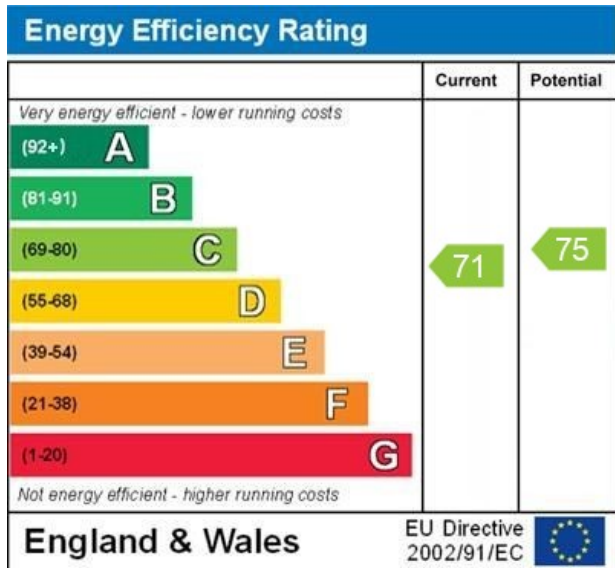
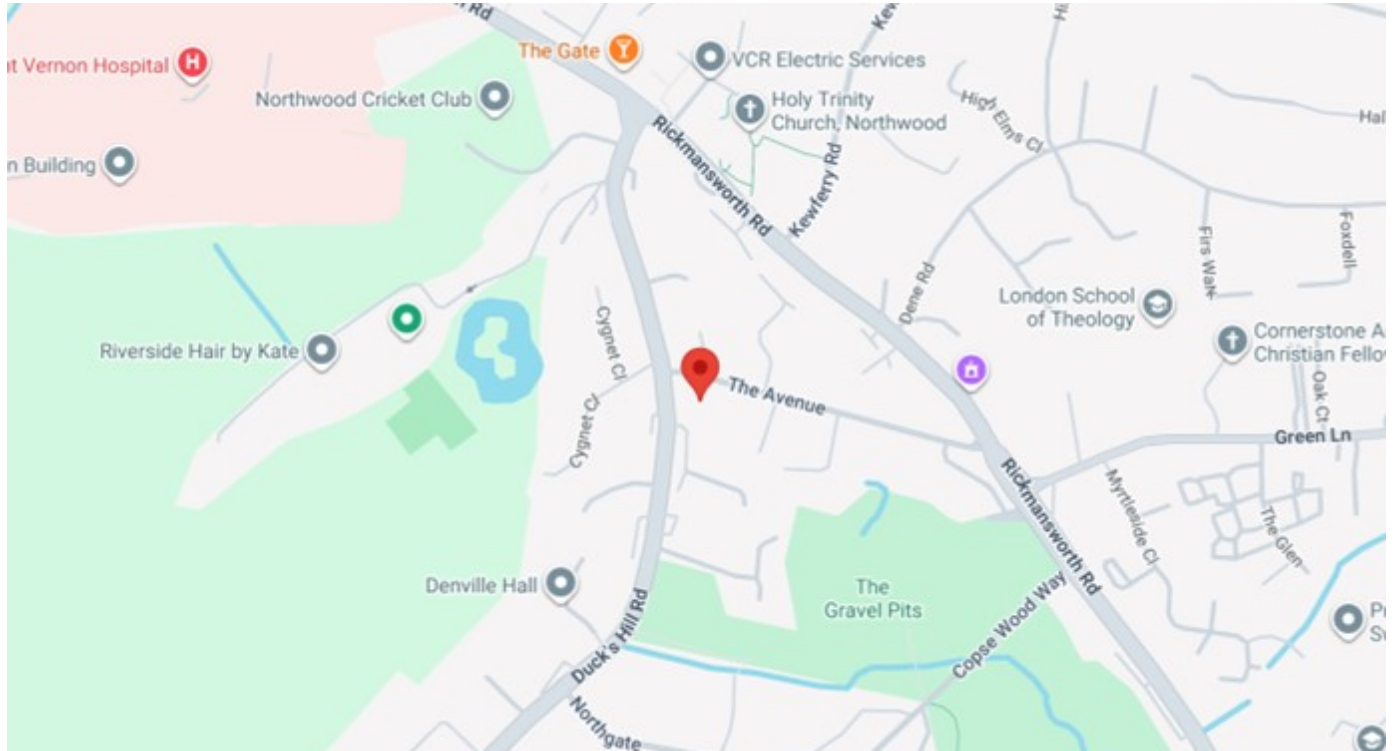
### **LOCAL SCHOOLS**

Holy Trinity C of E Primary School - 0.14 Miles

Frithwood Primary School - 0.86 Miles

### **LOCAL TRANSPORT**

Northwood Station (Metropolitan Line) - 0.7 Miles

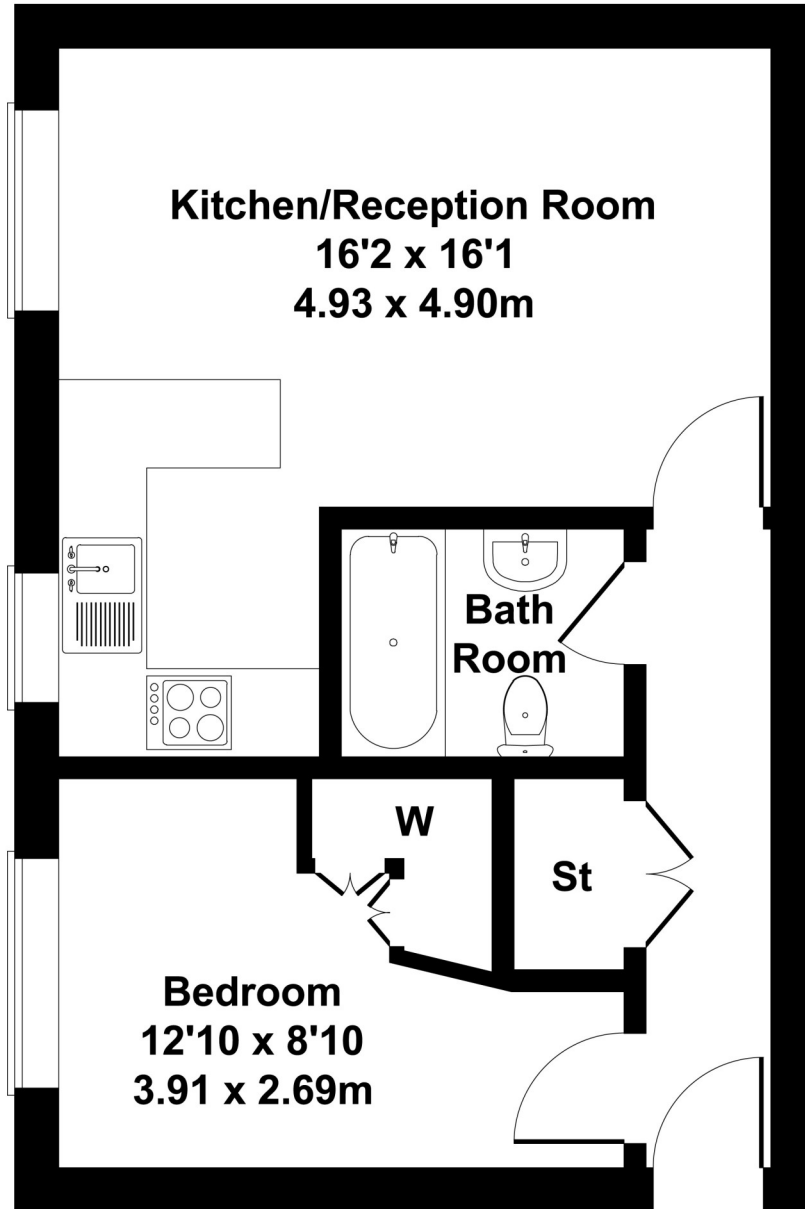


WWW.EPC4U.COM

# Rosecroft Court

Approximate Gross Internal Area

411 sq ft - 38 sq m



Not to Scale. Produced by The Plan Portal 2026  
**For Illustrative Purposes Only.**

*For appointments to view please call David Charles 020 8866 0222*

*All measurements are taken manually and whilst every care is taken with their accuracy they must be considered approximate and should not be relied upon when purchasing carpets or furniture. No responsibility is taken for any error, omission or misunderstanding in these particulars which do not constitute an offer or contract. Services and appliances have not been tested and therefore no warranty is offered on their operational condition.*