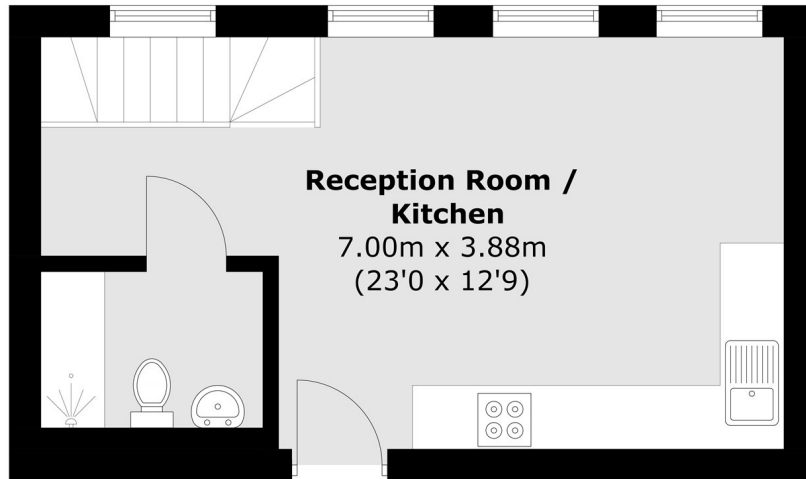




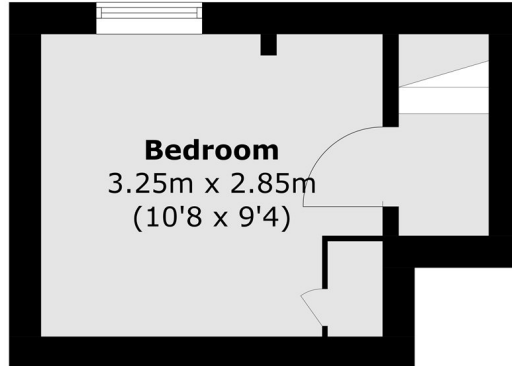
## Oldham Terrace, W3

£392 pw (£1,750 pcm)

A beautifully presented modern split-level one bedroom duplex apartment situated on the first floor within a recently converted 1920s period building in the heart of Acton. The flat comprises a fully-fitted kitchen including dishwasher, and washing/drying machine, bathroom and living room on the first floor and bedroom on the ground floor.



**First Floor**



**Ground Floor**

Total area (approx.): 37.9 sq. m (408.0 sq. ft)

Robertson Smith & Kempson Acton Lettings  
137 High Street,  
Acton, London, W3  
020 8896 3967  
[actonlettings@robertsonsmithandkempson.co.uk](mailto:actonlettings@robertsonsmithandkempson.co.uk)

Energy Rating: C. We aim to make our particulars both accurate and reliable. However they are not guaranteed; nor do they form part of an offer or contract. If you require clarification on any points then please contact us, especially if you're traveling some distance to view. Please note that appliances and heating systems have not been tested and therefore no warranties can be given as to their good working order.