



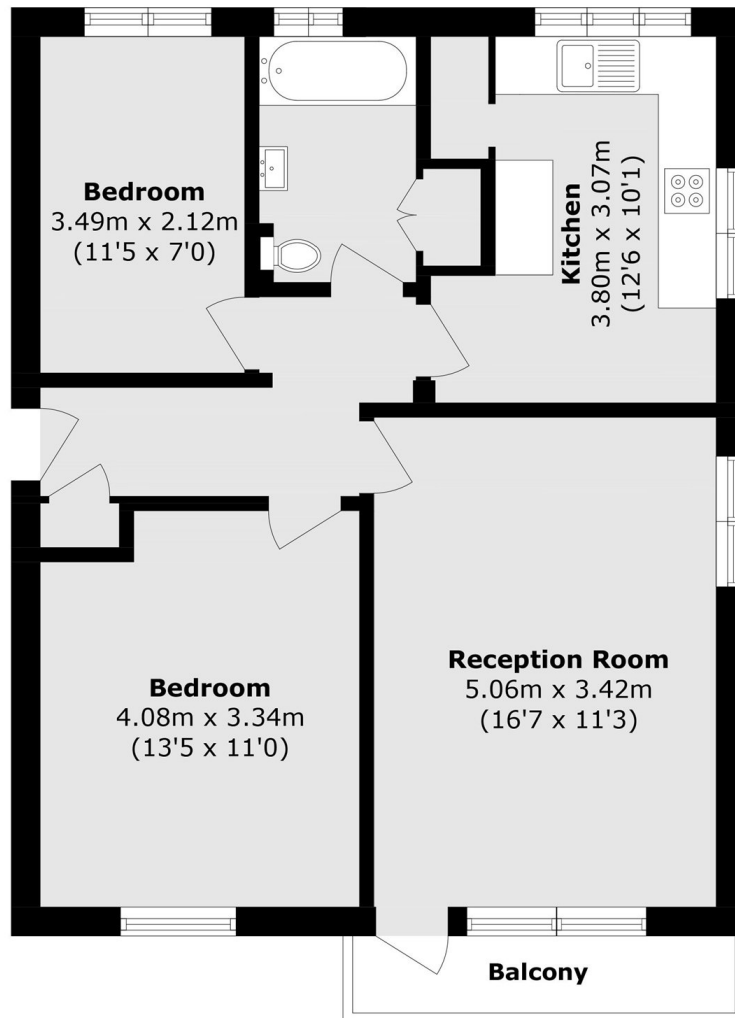
Old Ruislip Road, UB5

£299,950

A well-presented two-bedroom flat offering bright, spacious accommodation throughout. The property features a generous reception/dining room with access to a private balcony, a modern fitted kitchen, two good-sized bedrooms and a family bathroom.

Poplar Court is situated on Old Ruislip Road in Northolt, within easy reach of local shops, supermarkets, schools, parks and leisure facilities. Northolt Underground Station provides Central Line access into London, with South Ruislip also nearby, while Lime Tree Park and Rectory Fields offer local green spaces close by.

- Lift Access • Private Balcony • Garage Included •
- Residents Parking • Spacious Rooms • Modern Kitchen •



Total (approx.): 63.3 sq. m (681.3 sq. ft)
Balcony area (approx.): 3.1 sq. m (33.3 sq. ft)

David Conway
020 8422 5222

Energy Rating: C We aim to make our particulars both accurate and reliable. However they are not guaranteed; nor do they form part of an offer or contract. If you require clarification on any points then please contact us, especially if you're travelling some distance to view. Please note that appliances and heating systems have not been tested and therefore no warranties can be given as to their good working order.