



Jordan fishwick

107 Darley Avenue, Chorlton, M21 7QR
Guide Price £525,000



107 Darley Avenue, Chorlton, Manchester, M21 7QR

Guide Price £525,000




The Property

*****NO CHAIN***** A superbly presented and significantly EXTENDED FOUR/FIVE BEDROOM, TWO BATHROOM SEMI DETACHED 1930S PROPERTY located on a well regarded TREE-LINED ROAD mid way between Chorlton and Didsbury Village Centres. This delightful property benefits from a SOUTHERLY FACING REAR GARDEN as well as a DRIVEWAY providing ample off road parking and offers spacious and light accommodation ideal for a young couple or family. The property is well placed for all local amenities and transport links plus Chorlton Water Park and multiple local schools are only a short stroll away. The accommodation briefly comprises: entrance hallway, 21ft through lounge/dining room with large bay window open to the kitchen fitted with modern shaker style units and integrated appliances, central island and French patio doors opening to the rear garden, study/playroom/bedroom five, utility room, downstairs w/c. To the first floor there are four bedrooms, the main benefitting from an EN-SUITE shower room and second boasting full height fitted wardrobes and main family bathroom, fitted with a modern three piece suite. Both double glazing and gas central heating have been installed throughout. Externally, to the front of the property there is a paved driveway providing ample off road parking which extends to the side leading to the detached garage. To the rear, a delightful fenced and enclosed garden enjoys a sunny southerly aspect and features a large patio area, lawn, ornamental pond along with beds stocked with an array of mature plants and shrubs. Early viewing strongly recommended.

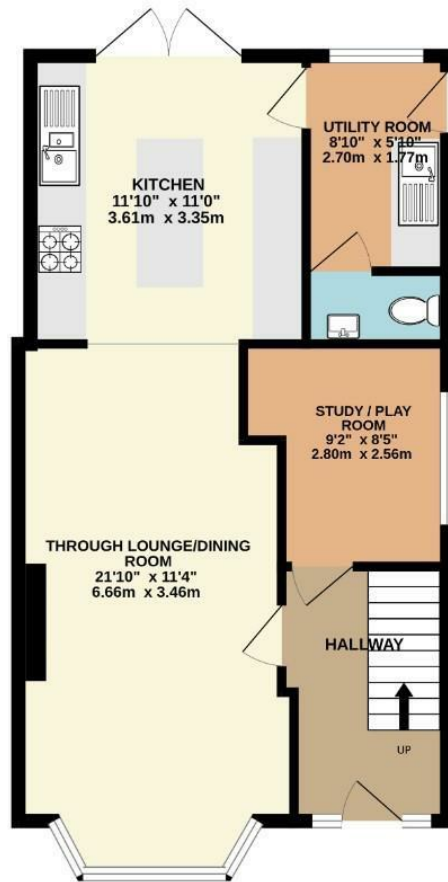
- NO CHAIN
- Superbly presented and extended semi detached 1930s property
- Four/five bedrooms + two bathrooms
- Southerly facing rear garden
- Driveway and garage providing off road parking
- Quiet and well regarded tree-lined road
- Located mid way between Chorlton and Didsbury Village Centres
- Move-in ready family home
- Walking distance from all local amenities, schools and Chorlton Water Park
- Council Tax: B. EPC: D



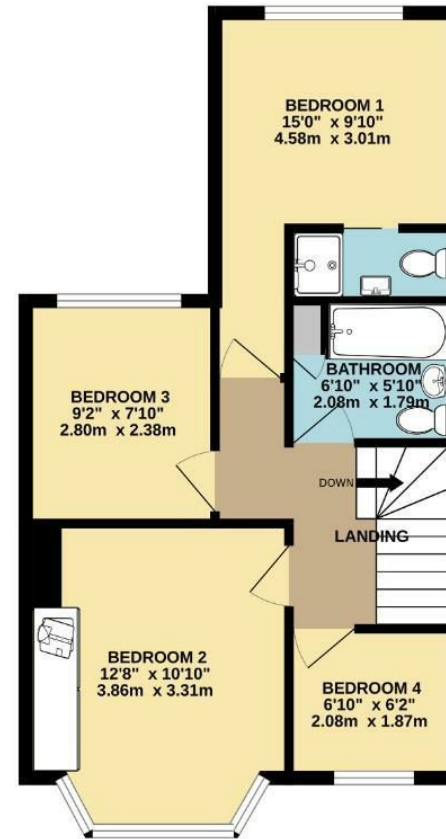
Energy Efficiency Rating		
	Current	Potential
Very energy efficient - lower running costs		
(92 plus) A		
(81-91) B		
(69-80) C		80
(55-68) D	65	
(39-54) E		
(21-38) F		
(1-20) G		
Not energy efficient - higher running costs		
England & Wales	EU Directive 2002/91/EC 	



GROUND FLOOR
566 sq.ft. (52.6 sq.m.) approx.



1ST FLOOR
480 sq.ft. (44.6 sq.m.) approx.



TOTAL FLOOR AREA: 1046 sq.ft. (97.2 sq.m.) approx.

Whilst every attempt has been made to ensure the accuracy of the floorplan contained here, measurements of doors, windows, rooms and any other items are approximate and no responsibility is taken for any error, omission or mis-statement. This plan is for illustrative purposes only and should be used as such by any prospective purchaser. The services, systems and appliances shown have not been tested and no guarantee as to their operability or efficiency can be given.
Made with Metropix ©2026



These particulars are believed to be accurate but they are not guaranteed and do not form a contract. Neither Jordan Fishwick nor the vendor or lessor accept any responsibility in respect of these particulars, which are not intended to be statements or representations of fact and any intending purchaser or lessee must satisfy himself by inspection or otherwise as to the correctness of each of the statements contained in these particulars. Any floorplans on this brochure are for illustrative purposes only and are not necessarily to scale.

Offices at: Chorlton, Didsbury, Disley, Hale, Glossop, Macclesfield, Manchester Deansgate, Manchester Whitworth Street, New Mills, Sale, Wilmslow and Withington