



Singapore Road, W13

£499,950

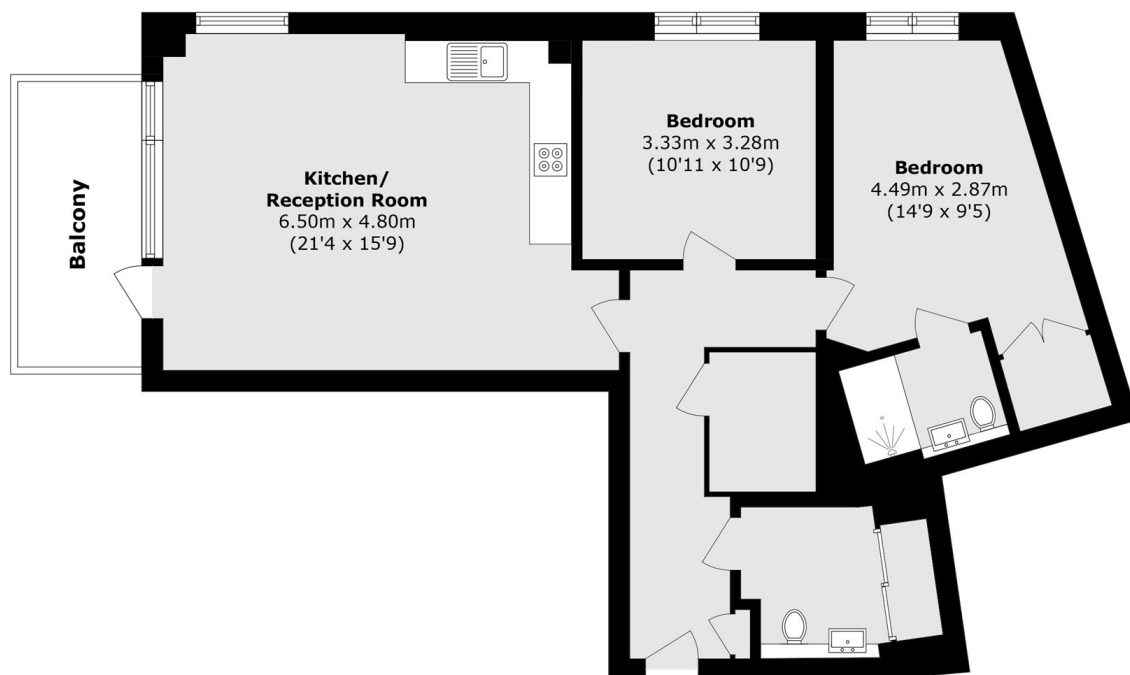
A well-presented two double bedroom, two bathroom first-floor apartment offered to the market with no onward chain. Constructed approximately ten years ago, the property has been newly redecorated and refreshed throughout, providing bright and modern accommodation ready for immediate occupation.

The property is ideally positioned just moments from West Ealing station, offering fast access via the Elizabeth line into Central London, as well as excellent local bus connections. A wide range of shops, cafés and everyday amenities are close by, with Ealing Broadway Station also within easy reach for additional Underground and rail services.

Features

- Two Bedrooms
- Two Bathrooms
- First floor
- Residents Permit Parking
- No Onward Chain
- Close To Station

Singapore Road, London, W13



Total area (approx.): 80.5 sq. m (866.5 sq. ft)

Balcony area (approx.): 7.2 sq. m (77.5 sq. ft)