



\* £250,000 - £260,000 \* A spacious ground floor flat offering versatile living accommodation, direct garden access and a generous west facing garden, all positioned in a convenient Southend-on-Sea location close to schools, transport links and amenities.

- Well Presented Ground Floor Flat
- Sizeable Open Plan Kitchen/Living Room
- Versatile Second Double Bedroom or Dining Room
- Extensive West Facing Rear Garden
- Gas Central Heating
- Entrance Hall with Storage
- Bay Fronted Master Bedroom
- Large Four Piece Bathroom
- Double Glazing
- Convenient Location Close to Schools and Transport Links

## Lovelace Gardens

Southend-on-Sea

**£250,000**

Guide Price



# Lovelace Gardens



This well proportioned ground floor flat opens with an entrance hall that includes useful storage and opens into a sizeable open plan kitchen/living room. This bright and sociable space also benefits from additional storage to the rear and French doors that open directly onto the garden, creating an ideal setting for relaxing or entertaining. The property offers two double bedrooms, including a bay fronted master bedroom and a second double bedroom with French doors to the garden, currently utilised as a dining room, demonstrating the flexibility of the layout. A generous four piece bathroom completes the interior, fitted with a bath, walk-in shower, WC and wash basin. Externally, the home enjoys an extensive west facing rear garden, ideal for enjoying afternoon and evening sun. Further benefits include double glazing and gas central heating.

Situated on Lovelace Gardens in Southend-on-Sea, the property falls within catchment of Hamstel Infant School and Nursery, Hamstel Junior Schools and Cecil Jones Academy. The location offers easy access to bus links, Southend East Train Station, local amenities and nearby parks, making it a practical and well connected place to live.

## Two Bedroom Ground Floor Flat

### Entrance Hall

11'5 x 3'7

### Kitchen/Living Room

28'2 x 10'10 > 7'9

### Bedroom One

12'3 x 10'8

### Bedroom Two/Dining Room

12'0 x 9'5

### Four Piece Bathroom

10'8 x 6'9

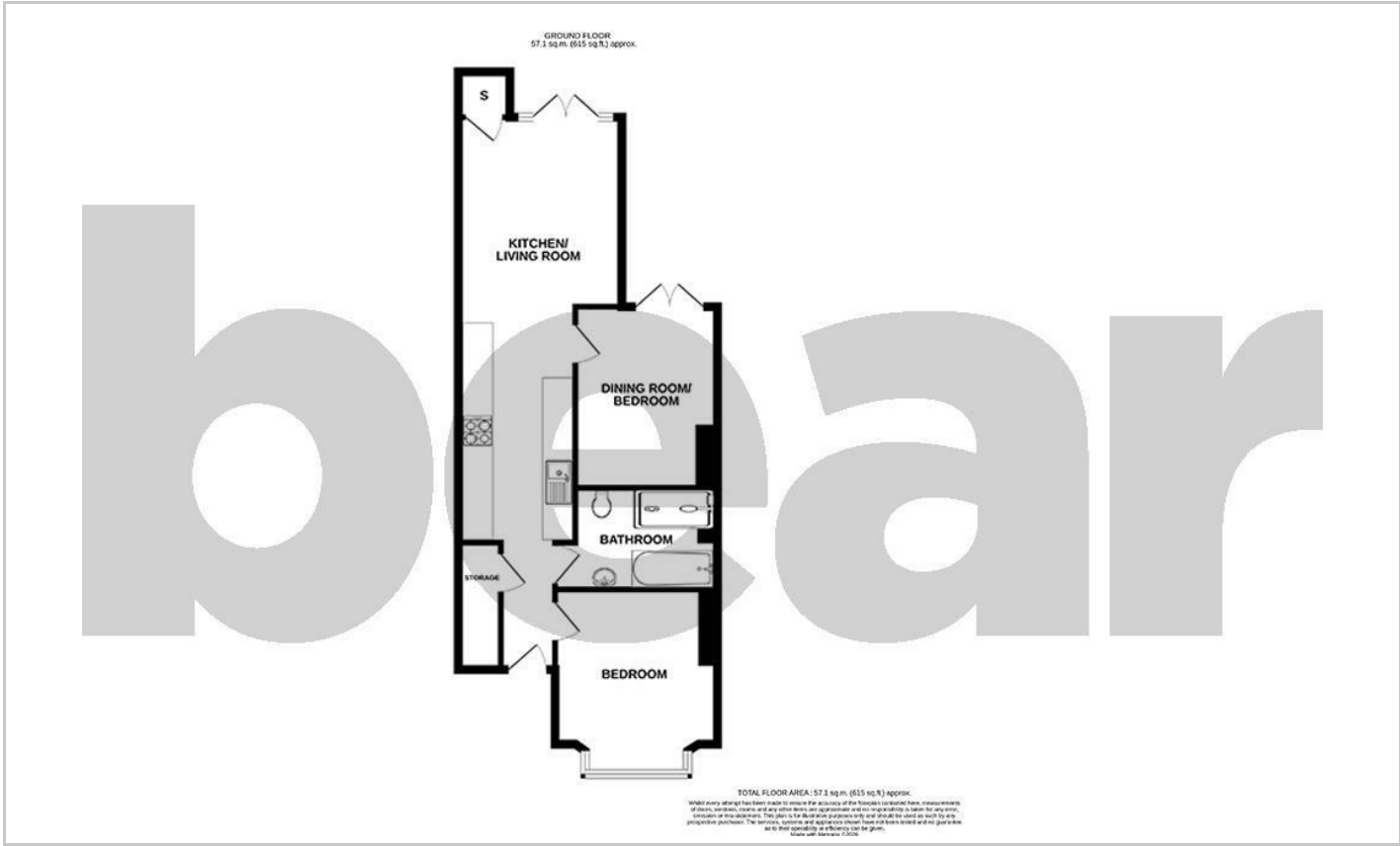
### West Facing Garden



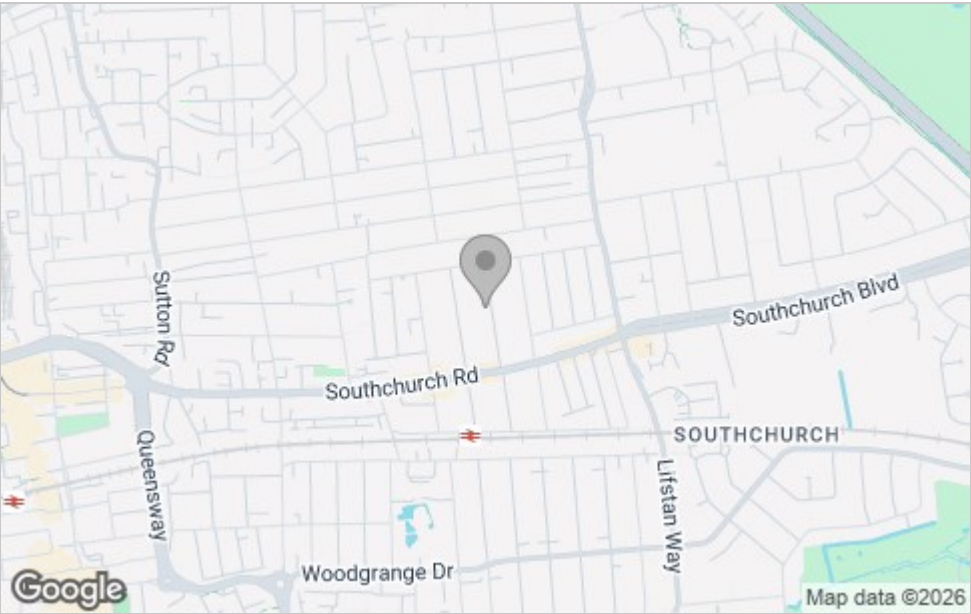




Floor Plan



Area Map



Viewing

Please contact our Southend-on-Sea Office on 01702 811211 if you wish to arrange a viewing appointment for this property or require further information.

These particulars, whilst believed to be accurate are set out as a general outline only for guidance and do not constitute any part of an offer or contract. Intending purchasers should not rely on them as statements of representation of fact, but must satisfy themselves by inspection or otherwise as to their accuracy. No person in this firm's employment has the authority to make or give any representation or warranty in respect of the property.

204 Woodgrange Drive, Southend-on-Sea, Essex, SS1 2SJ

Office: 01702 811211 [info@bearestateagents.co.uk](mailto:info@bearestateagents.co.uk) <https://www.bearestateagents.co.uk>

Energy Efficiency Graph

