



Lenthay Close, SHERBORNE, DT9 6AE

welcome to

Lenthay Close, SHERBORNE

A three bedroom end of terrace family home, situated in the delightful Dorset town of Sherborne and close to many local amenities. The accommodation is presented in excellent decorative order throughout boasting a wealth of space and natural light.



Entrance

Double glazed door to the side, opening into:

Entrance Hall

Stairs rising to the first floor. Opening into:

Lounge

12' x 11' 4" (3.66m x 3.45m)

A lovely light room with double glazed window to the front. Feature fireplace. Understairs storage cupboard. Radiator. Opening into:

Inner Hall

Double glazed door to the side opening to the side access.

Fitted Kitchen

10' 3" x 9' 11" (3.12m x 3.02m)

Double glazed window to the rear overlooking the garden. A range of fitted wall, base and drawer units with work surface over and complementary tiled surround. Single bowl stainless steel sink and drainer with mixer tap. Space for free standing cooker with cooker hood over, Plumbing for dishwasher. Integrated fridge/freezer. Wall mounted boiler. Radiator.

Shower Room

Double glazed window to the side. Suite comprising walk in double shower, wash hand basin inset to vanity unit with storage below and WC. Plumbing for washing machine. Inset spotlights to the ceiling. Chrome towel radiator.

First Floor Landing

Double glazed window to the side. Access to the loft space. Radiator.

Bedroom One

12' 1" x 11' (3.68m x 3.35m)

Double glazed window to the front. Space for free standing furniture. Radiator. Door opening into:

W C

Suite comprising wash hand basin and WC.

Bedroom Two

12' 7" x 7' 9" (3.84m x 2.36m)

Double glazed window to the rear overlooking the garden. Airing cupboard. Space for free standing furniture. Radiator.

Bedroom Three

7' 11" x 7' 5" (2.41m x 2.26m)

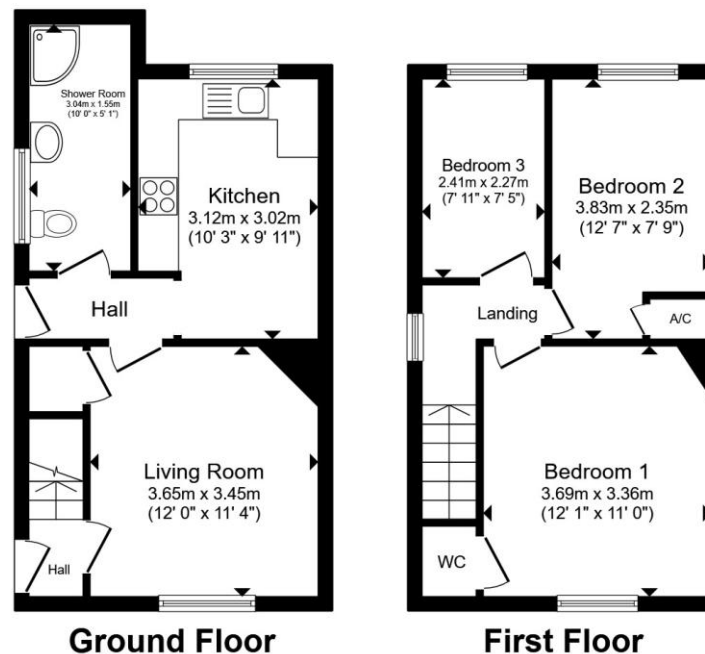
Double glazed window to the rear overlooking the garden. Radiator.

Front Garden

Access via a hardstanding and shingle driveway providing off road parking. Shared side access leading to the rear garden.

Rear Garden

A fully enclosed rear garden, laid mainly to lawn with mature plant borders to the rear. Brick built outbuilding. Garden shed and outside light and tap.



Total floor area 66.1 m² (712 sq.ft.) approx

This floor plan is for illustrative purposes only. It is not drawn to scale. Any measurements, floor areas (including any total floor area), openings and orientation are approximate. No details are guaranteed, they cannot be relied upon for any purpose and they do not form part of any agreement. No liability is taken for any error, omission or misstatement. A party must rely upon its own inspection(s). Powered by www.propertybox.io

 fox & sons



view this property online fox-and-sons.co.uk/Property/YEO108888



welcome to

Lenthay Close, SHERBORNE

- End of Terrace Family Home
- Three Bedrooms with WC to the Master
- Well Presented Accommodation
- Driveway Parking
- Enclosed Rear Garden with Brick Built Outbuilding

Tenure: Freehold EPC Rating: D

Council Tax Band: B

offers in excess of

£220,000



Please note the marker reflects the postcode not the actual property

view this property online fox-and-sons.co.uk/Property/YEO108888



Property Ref:
YEO108888 - 0005

1. MONEY LAUNDERING REGULATIONS Intending purchasers will be asked to produce identification documentation at a later stage and we would ask for your co-operation in order that there is no delay in agreeing the sale. 2. These particulars do not constitute part or all of an offer or contract. 3. The measurements indicated are supplied for guidance only and as such must be considered incorrect. Potential buyers are advised to recheck measurements before committing to any expense. 4. We have not tested any apparatus, equipment, fixtures or services and it is in the buyers interest to check the working condition of any appliances. 5. Where an EPC, or a Home Report (Scotland only) is held for this property, it is available for inspection at the branch by appointment. If you require a printed version of a Home Report, you will need to pay a reasonable production charge reflecting printing and other costs. 6. We are not able to offer an opinion either written or verbal on the content of these reports and this must be obtained from your legal representative. 7. Whilst we take care in preparing these reports, a buyer should ensure that his/her legal representative confirms as soon as possible all matters relating to title including the extent and boundaries of the property and other important matters before exchange of contracts.


fox & sons



01935 412100



Yeovil@fox-and-sons.co.uk



14 Princes Street, YEOVIL, Somerset, BA20 1EW



fox-and-sons.co.uk