



Thane Villas, N7

£675,000

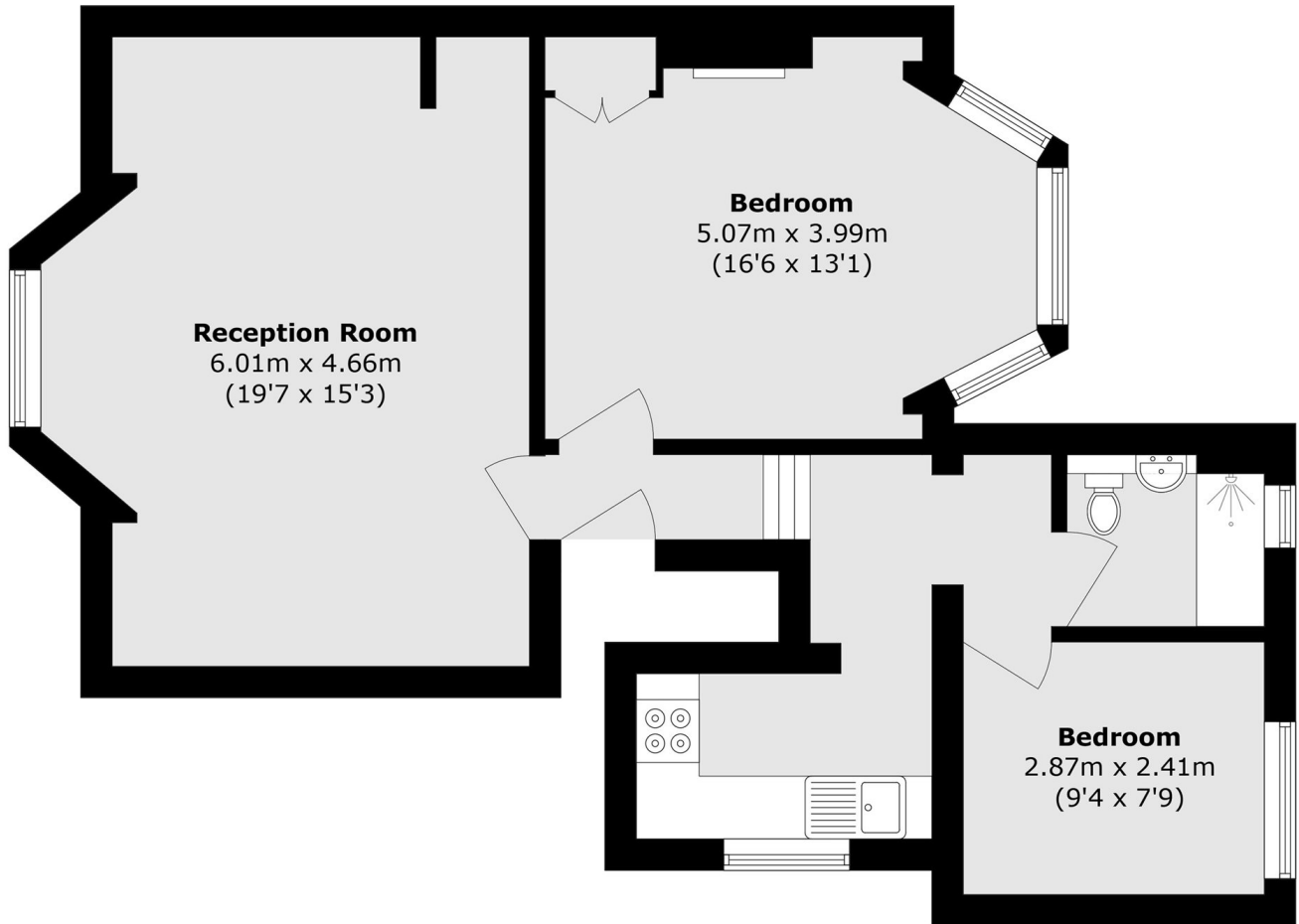
A charming raised ground floor two bedroom period property set on a peaceful residential road, offering a separate kitchen and living room, a private rear garden, off-street parking, and a share of freehold.

Ideally located on sought-after Thane Villas, the property is within easy reach of Finsbury Park and Holloway stations, as well as a great selection of local shops, supermarkets, green spaces, and leisure facilities.

Features

- Two Bedrooms
- Private Garden
- Share of Freehold
- Off Street Parking
- Characterful Features
- Superb Transport Links

Thane Villas, LONDON, N7



Total area (approx.): 64.5 sq. m (694.3 sq. ft)