



www.knights.uk.com

CARDIFF

VALE

CAERPHILLY

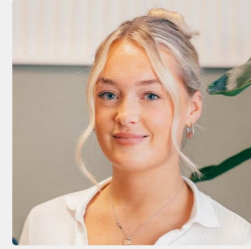
BRISTOL



Holton Road



Comments by Miss Georgia Farr



Property Specialist
Miss Georgia Farr
 Sales Negotiator

georgia@jeffreycrossandknights.co.uk

Holton Road, Barry



Total Area: 140.6 m² ... 1514 ft²
 All measurements are approximate and for display purposes only

Comments by the Homeowner





Holton Road

, Barry, CF63 4HE

PCM

£1,000 PCM



0 Bedroom(s)



0 Bathroom(s)



1571.00 sq ft



Contact our
Knights Barry Branch

01446 700222

We are delighted to present an exceptional opportunity to lease a commercial unit located in the heart of Barry, specifically on the busy Holton Road. This property boasts A3 usage, making it an ideal choice for those looking to establish a takeaway, café, or restaurant in a vibrant area with high foot traffic.

The unit is thoughtfully spread over two floors, providing ample space for your business to thrive. Each level is immaculately presented, ensuring that you can create an inviting atmosphere for your customers from the moment they step inside. The well-maintained interiors offer a blank canvas, allowing you to tailor the space to suit your unique vision and brand identity.

Situated in a prime location, this commercial unit benefits from excellent visibility and accessibility. With its combination of space, presentation, and location, this property represents a fantastic opportunity for those seeking to embark on a new venture in Barry. We invite you to explore this promising space and envision the possibilities it holds for your business.



CARDIFF

VALE

CAERPHILLY

BRISTOL





Energy Efficiency Rating		Current	Potential
Very energy efficient - lower running costs			
(92 plus) A			
(81-91) B			
(69-80) C			
(55-68) D			
(39-54) E			
(21-38) F			
(1-20) G		1	1
Not energy efficient - higher running costs			
England & Wales		EU Directive 2002/91/EC	

