

SCOTT &
STAPLETON

EASTWOOD ROAD
, SS6 7LL
£1,400 PCM





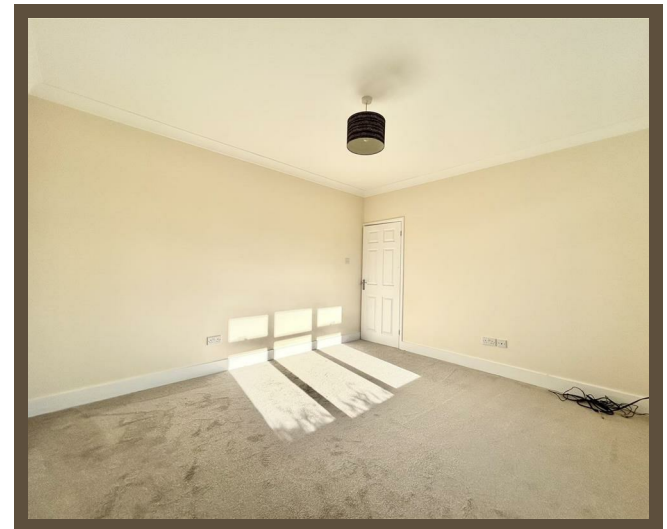
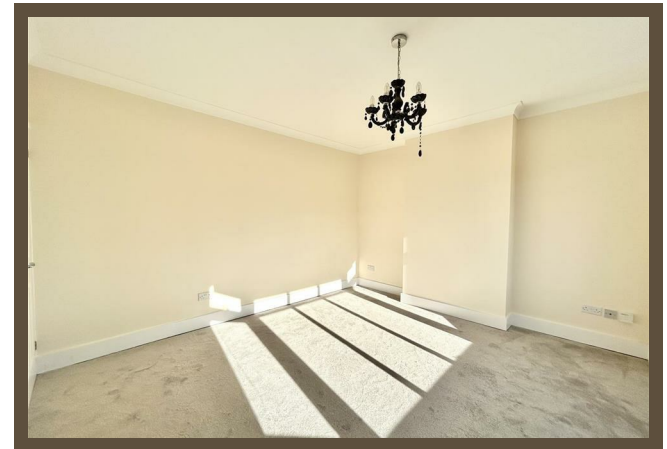
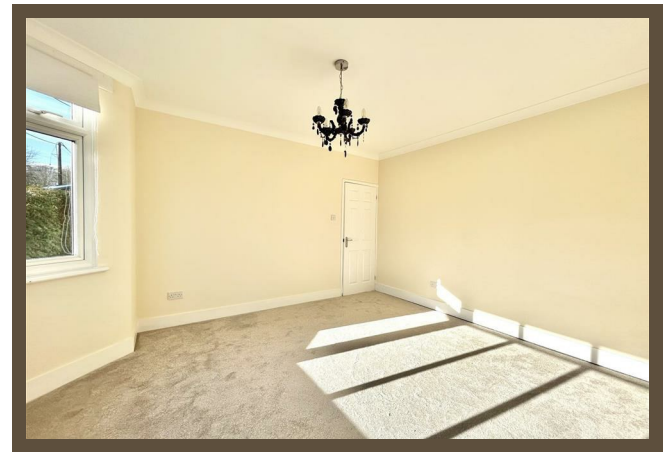
EASTWOOD ROAD

, SS6 7LL

£1,400

pcm

Scott & Stapleton are delighted to offer this two bedroom detached bungalow, situated on Rayleigh/ Eastwood borders, on a generous corner plot and benefiting from detached garage and off street parking to rear. The property has been recently decorated and re-carpeted and is offered unfurnished and available immediately.



Hallway

Living room

4.29m x 4.01m (14'1 x 13'2)
14'1 x 13'2

Kitchen

4.29m x 4.01m (14'1 x 13'2)

Bedroom one

3.89m x 3.58m (12'9 x 11'9)

Bedroom two

3.86m x 3.45m (12'8 x 11'4)

Bathroom wc

Rear garden

Garage

Off street parking

