



Guide Price
£240,000

Freehold

2x  1x  2x 

**May Road, Gillingham,
Kent, ME7**

OVER 60?

Secure this property
for up to **59% less!**

Wards
Helping you move forwards



Main features

- Well presented Victorian terraced house, ideal for the first time buyer
- Well fitted kitchen and utility room
- Stunning bathroom with jacuzzi bath
- Gas central heating and double glazing
- Situated close to Medway Maritime hospital

Accommodation

SPLIT LEVEL GROUND FLOOR

Porch

Lounge : 12'6 x 12'3 (3.81m x 3.74m)

Mid Hall

Dining Room: 12'3 x 10'3 (3.74m x 3.13m)

Kitchen: 9'8 x 7'6 (2.95m x 2.29m)

Utility Room: 5'1 x 3'7 (1.55m x 1.09m)

Separate Toilet

SPLIT LEVEL FIRST FLOOR

Landing

Bedroom 1: 12'1 x 10'3 (3.69m x 3.13m)

Bedroom 2: 12'2 x 10'4 (3.71m x 3.15m)

En-suite Bathroom

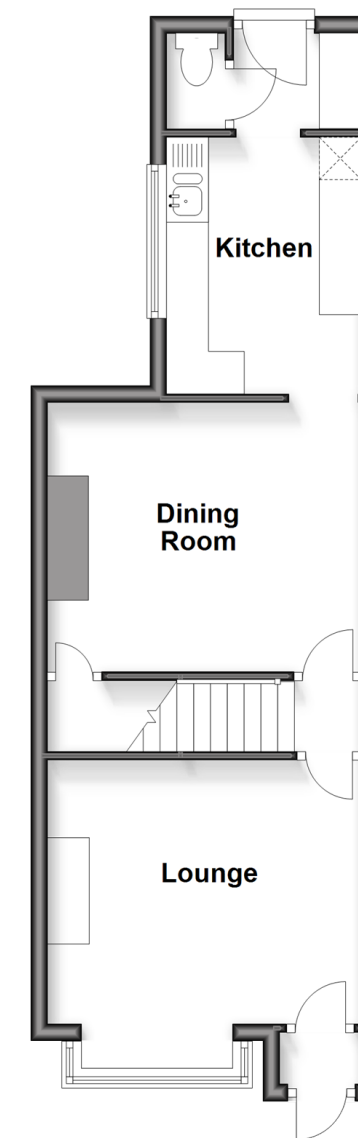
OUTSIDE

Front Garden

Rear Garden

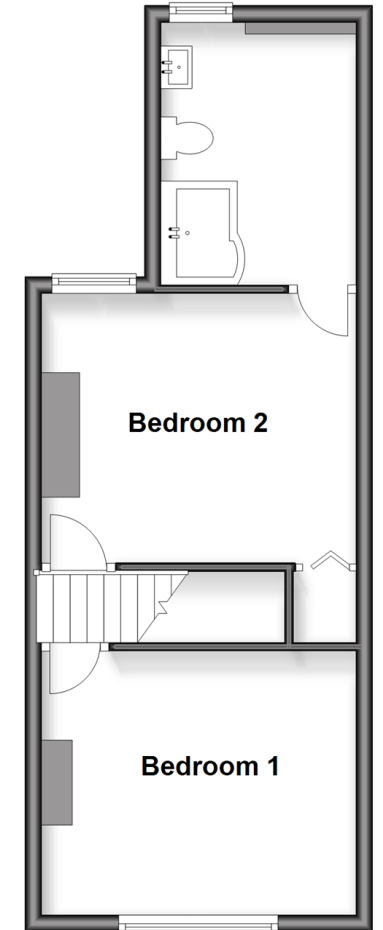
Split Level Ground Floor

Approx. 38.5 sq. metres (414.8 sq. feet)



Split Level First Floor

Approx. 34.7 sq. metres (373.5 sq. feet)



Call Gillingham - 01634 851191 ■ wardsforkent.co.uk

- Legal advice should be taken to verify fixtures/fittings, planning, alterations and/or lease details
- Appliances & services are untested, dimensions are approximate and floor plans are not to scale
- Through a Homewise Home For Life Plan people aged 60+ can secure this property for up to 59% less, by purchasing a Lifetime Lease



10927666/20260124/ML/GS