



Loose Road, Maidstone, ME15 9UQ
Price £270,000



NO FORWARD CHAIN

A charming and beautifully presented character cottage, ideally suited to first-time buyers or those seeking a period home in excellent order, situated within the highly regarded village of Loose. The accommodation offers an attractive blend of character and modern convenience, comprising a cosy lounge centred around a feature fireplace, separate dining room and a stylish modern kitchen. To the first floor are two bedrooms served by a contemporary bathroom, whilst a useful cellar on the lower ground floor provides valuable storage space and potential for conversion to an additional room if required.

Externally, the property benefits from a beautifully landscaped rear garden, thoughtfully designed for low-maintenance enjoyment.

Conveniently positioned close to the picturesque Loose Conservation Area, the property is within walking distance of the well-regarded Loose Primary School together with everyday amenities including Sainsbury's Local, The Loose Goose café and The Chequers Inn pub, offering excellent convenience for day-to-day living.

Early viewing is highly recommended to appreciate the charm and presentation this delightful cottage has to offer.



GROUND FLOOR

Lounge 11'11" x 11'7" (3.64m x 3.54m)

Dining Room 11'7" x 9'1" (3.54m x 2.79m)

Kitchen 11'4" x 7'6" (3.46m x 2.30m)


FIRST FLOOR

Bedroom 1 9'3" x 8'11" (2.82m x 2.74m)

Bedroom 2 11'7" x 6'10" (3.54m x 2.09m)

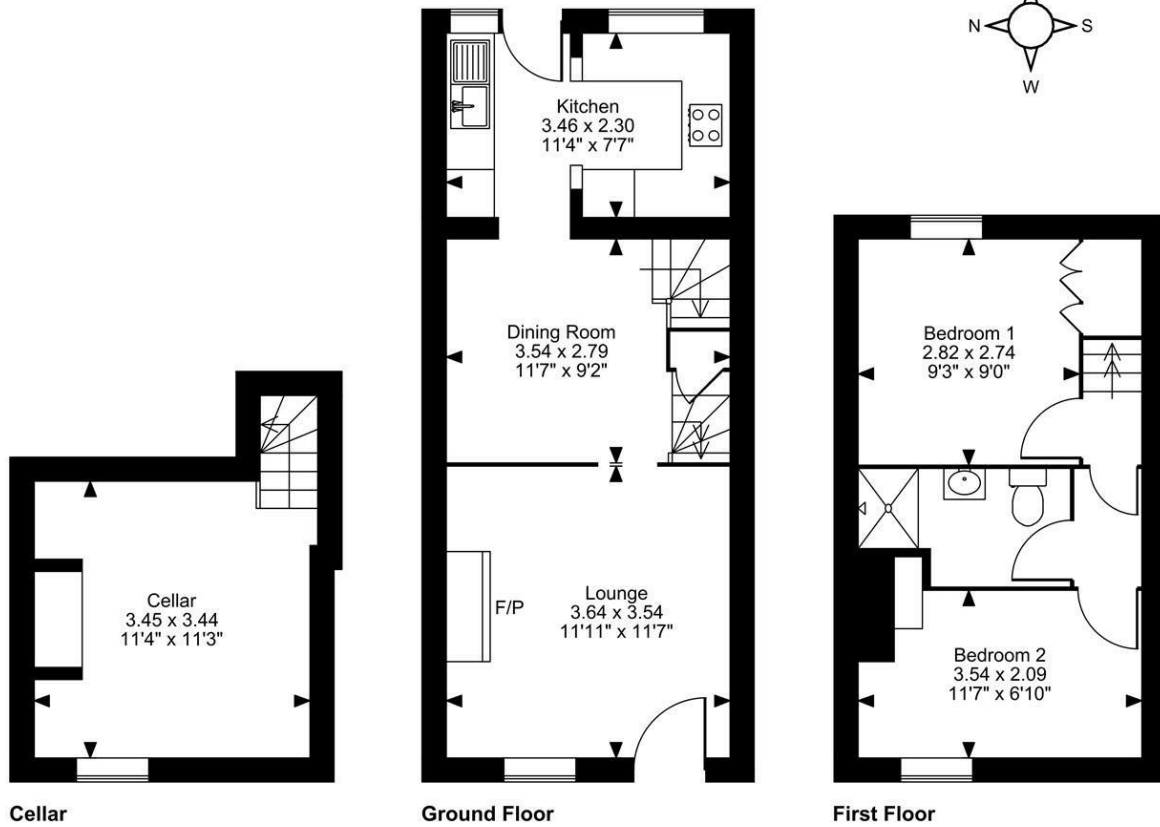
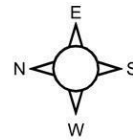
Bathroom

Cellar 11'3" x 11'3" (3.45m x 3.44m)

Energy Efficiency Rating		
	Current	Potential
<i>Very energy efficient - lower running costs</i>		
(92 plus) A		
(81-91) B		
(69-80) C		
(55-68) D		
(39-54) E		
(21-38) F		
(1-20) G		
<i>Not energy efficient - higher running costs</i>		
England & Wales	EU Directive 2002/91/EC	

Page & Wells limited for themselves and for the vendors of this property whose agents they are give notice that: 1. These particulars do not constitute any part of, an offer or a contract. 2. All statements contained in these particulars as to this property are made without responsibility on the part of Page & Wells Limited or the Vendor. 3. None of the statements contained in these particulars as to the property is to be relied on as statements or representations of fact. 4. Any intending purchaser must satisfy himself by inspection or otherwise as to the correctness of each of the statements contained in these particulars. 5. The vendor does not make or give, and neither Page & Wells Limited nor any person in their employment has any authority to make or give any representation whatsoever in relation to this property. These particulars are supplied on the understanding that all negotiations are carried out throughout Page & Wells Limited. Properties with a reference prefixes EAA are those which Page & Wells Limited disclose an interest in accordance with the provisions of the Estates Agents Act 1979

Loose Road, Maidstone, Kent
Approximate Gross Internal Area
721 Sq Ft/67 Sq M



FOR ILLUSTRATIVE PURPOSES ONLY - NOT TO SCALE

The position & size of doors, windows, appliances and other features are approximate only.

© ehouse. Unauthorised reproduction prohibited. Drawing ref. dig/8692661/SAP

