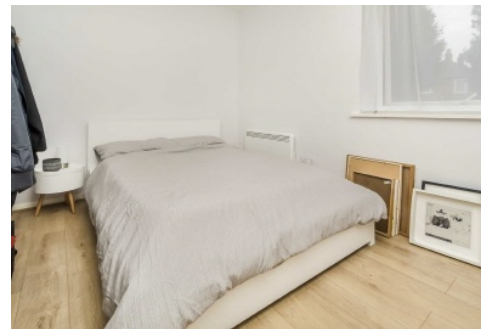


SNELLERS

ESTATE AGENTS



Park Road, TW11

£1,750 PCM

A delightful ground floor apartment located within close proximity to Teddington Station and the High Street. The property has good storage and a large separate kitchen .

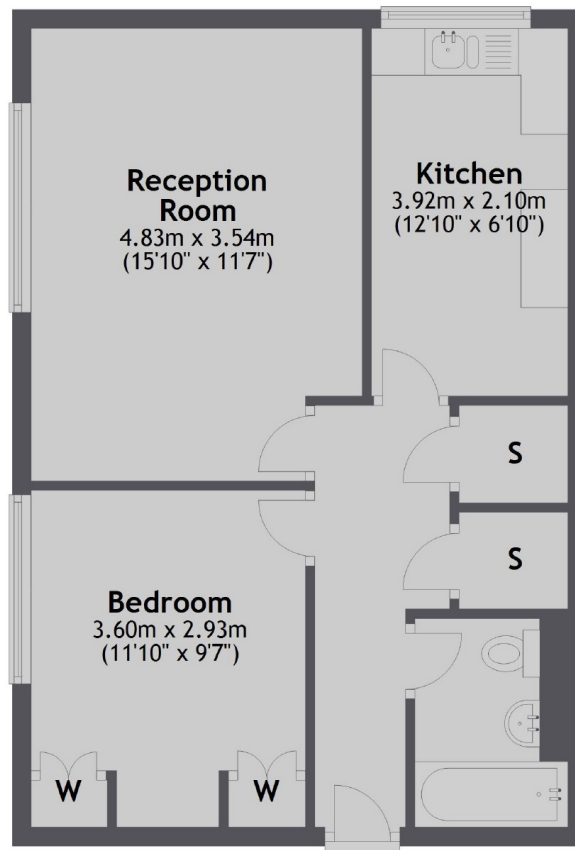
The apartment is in a well maintained development just 0.1 mile from Teddington station with the fantastic shops, bars and restaurants of the High Street just a short distance further.

- Ground Floor • Close to The Train Station • Double Glazed Throughout •
- Good Storage Cupboards • Bright Separate Kitchen • Communal Grounds •

SNELLERS

ESTATE AGENTS

Ground Floor



Total area: approx. 48.8 sq. metres (525.7 sq. feet)

Snellers Teddington Lettings
74 Broad Street
Teddington
TW11 8QX
020 8614 6140
teddingtonlettings@snellers.co.uk

Energy Rating: E We aim to make our particulars both accurate and reliable. However they are not guaranteed; nor do they form part of an offer or contract. If you require clarification on any points then please contact us, especially if you're traveling some distance to view. Please note that appliances and heating systems have not been tested and therefore no warranties can be given as to their good working order