

NEVIN & WELLS

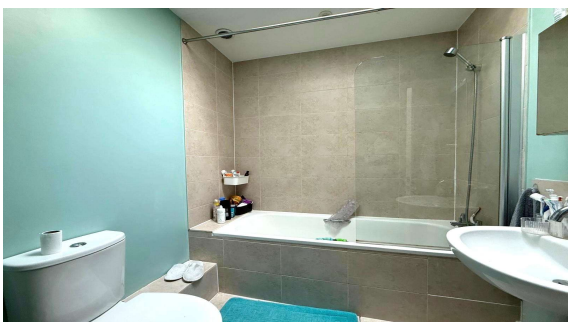
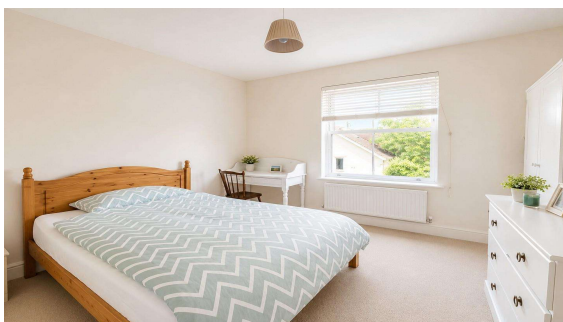
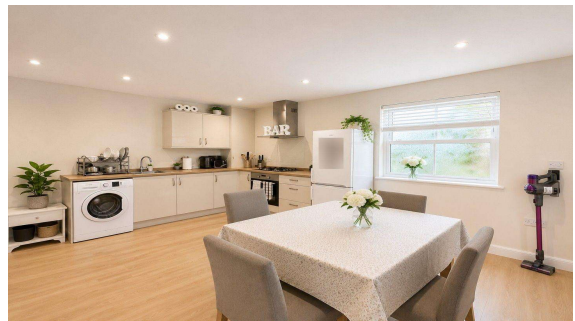
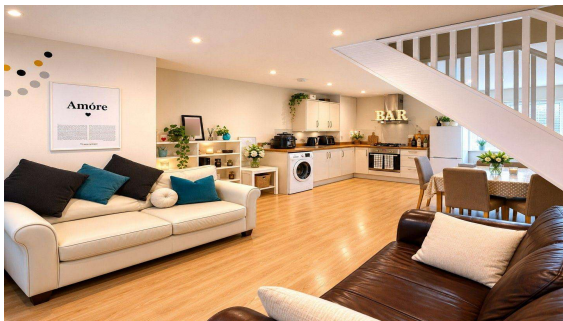
Residential

Established 2002



Rusham Road, Egham, Surrey, TW20 9LS

£325,000 F/H



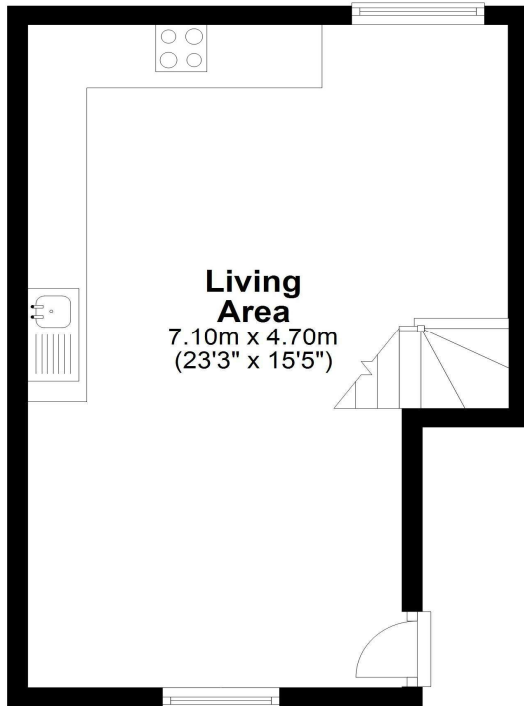
A modern terraced house, situated just off the High Street and two minutes from Egham's mainline station. The property offers two double bedrooms, first floor bathroom and the potential of being sold furnished. The ground floor accommodation is light and airy with fitted kitchen to the rear. No onward chain with this purchase.

Rusham Road, Egham, Surrey, TW20 9LS

FLOOR PLAN

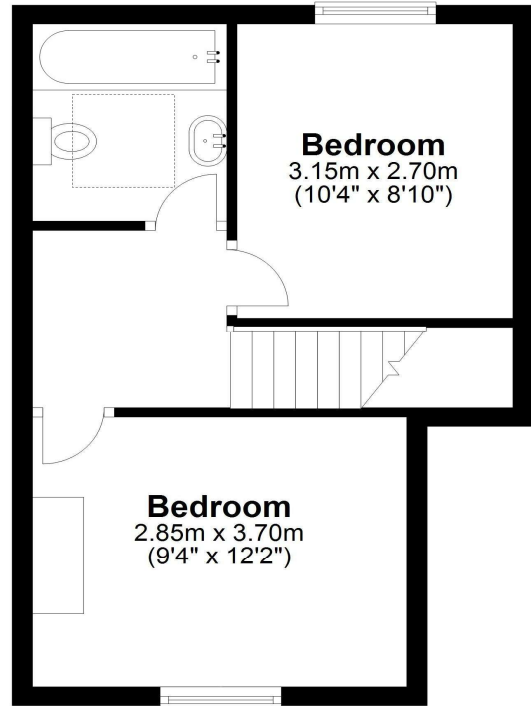
Ground Floor

Approx. 30.2 sq. metres (325.5 sq. feet)



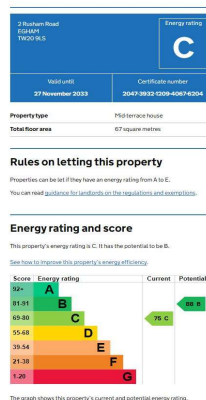
First Floor

Approx. 30.2 sq. metres (325.2 sq. feet)



Total area: approx. 60.4 sq. metres (650.6 sq. feet)

EPC



COUNCIL TAX BAND:

C - Runnymede Borough Council

VIEWINGS:

By appointment with the clients selling agents,
Nevin & Wells Residential on 01784 437 437 or visit
www.nevinandwells.co.uk



All measurements are approximate. Nevin & Wells Residential have not tested any systems or appliances.