



Buckhold Road, SW18

£625,000

Dexters



Buckhold Road, SW18

Set within the sought-after Bronze Building, this beautifully presented two-bedroom apartment offers contemporary living with far-reaching views and excellent natural light throughout.

The property features a spacious open-plan reception and dining area, ideal for both relaxing and entertaining, alongside a sleek, fully integrated kitchen. Both bedrooms are well-proportioned, with the principal bedroom offering generous storage and ensuite, a modern family bathroom completes the accommodation. A standout feature is the private balcony, providing impressive views over green open spaces and the surrounding skyline.

Residents further benefit from access to an impressive communal roof terrace, offering views across the London skyline perfect for relaxing or socialising. The development also provides a concierge service, adding convenience and an extra level of security for residents.

Ideally located in Wandsworth, the property is within easy reach of the amenities of Southside Shopping Centre, as well as a variety of cafés, gyms, restaurants and green spaces including King George's Park. Excellent transport links are nearby, with Wandsworth Town Station and East Putney Station providing swift access into Central London and beyond.

Features

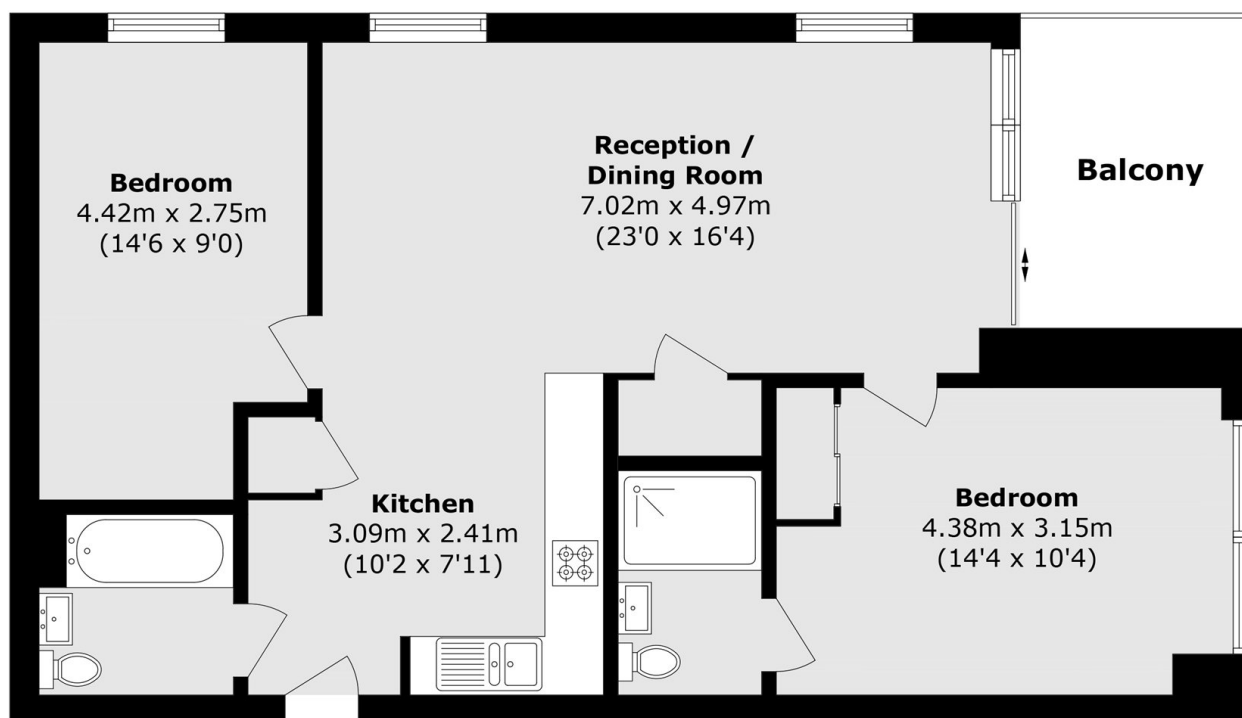
- Two Bedrooms
- Two Bathrooms
- 781 sq. ft
- Private balcony
- Chain free
- Beautiful Views







Buckhold Road, London, SW18



Total area (approx.): 72.6 sq. m (781.4 sq. ft)
Balcony area (approx.): 6.5 sq. m (69.9 sq. ft)